

# NILFISK SUPREME 100/150/250/LCD

---

Model:

NILFISK SUPREME 100

NILFISK SUPREME 150

NILFISK SUPREME 250

NILFISK SUPREME LCD



Part List US-English

11-09-2013

# Nilfisk

[www.nilfisk.com](http://www.nilfisk.com)

# Table of Contents

NILFISK SUPREME 100/150/250/LCD

<b>Overview 100</b>	<b>3</b>
<b>Overview 150, 250</b>	<b>5</b>
<b>Overview LCD</b>	<b>7</b>
<b>Bent ends</b>	<b>9</b>
<b>Black dust container</b>	<b>11</b>
<b>100 Accessories</b>	<b>13</b>
<b>150, 250, LCD Accessories</b>	<b>15</b>
<b>RECOMMENDED SPARE PARTS</b>	<b>17</b>

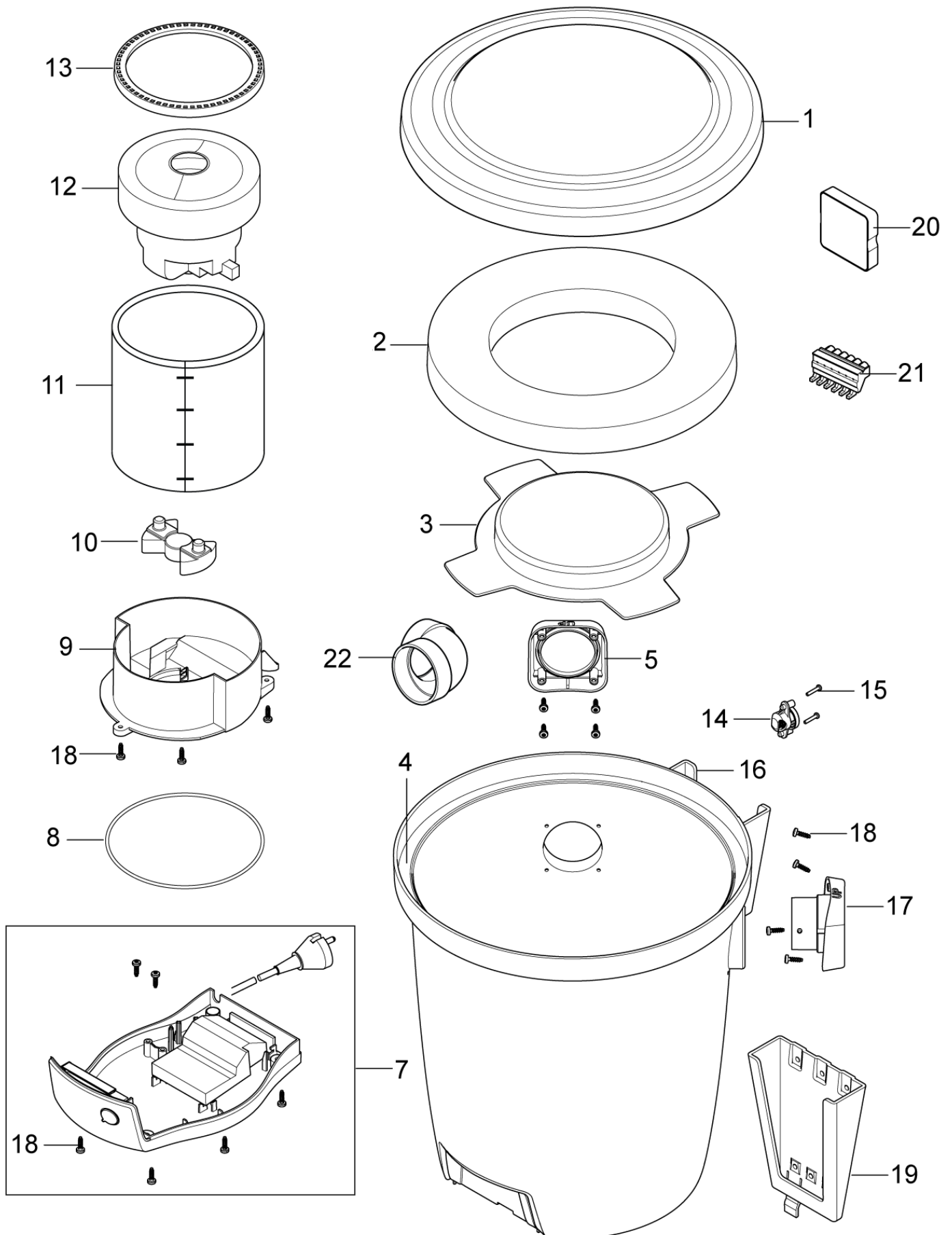
# Overview 100

NILFISK SUPREME 100/150/250/LCD

11-09-2013

Part List ID  
SUPREME02

3



# Overview 100

NILFISK SUPREME 100/150/250/LCD

11-09-2013

Part List ID  
SUPREME02

4

Pos	Part no.	Qty	Description
1	140 8505 010	1	LID ALTO
2	140 8539 500	1	FILTER CV
3	140 8537 000	1	IP COVER
4	140 0061 060	1	GASKET L 1075
5	140 8536 020	1	PLUG INLET ALTO
7	107408045	1	COVER TOP NILF EU PERF-SUPR 100-150-250
8	140 6799 010	1	GASKET L 660
9	140 8521 000	1	NOISE TRAP
10	107408017	1	REAR MOTOR MOUNT FOR CV
11	107408012	1	CVUPGR SOUND REDUCTION FOAM
12	107408008	1	CVUPGR FAN UNIT 1300W 220-240V 50-60HZ
13	107408016	1	FRONT MOTOR MOUNT FOR CV
14	140 7779 010	1	VACUUM VALVE CPL.
15	140 9214 220	2	SCREW PT K30X16 FZB
16	140 8526 060	1	CHASSIS W INLET NILFISK
17	140 8535 020	1	INLET ALTO
18	140 9214 040	18	SCREW PTK TORX 40X14 MM FZB
19	147 1427 510	1	BRACKET WALL CV
20	107408055	1	TRANSCEIVER BOX CPL 433MHZ
21	107408020	1	6POLE CV CONNECTOR
22	42000254	1	90 DEGREE SHORT ELBOW

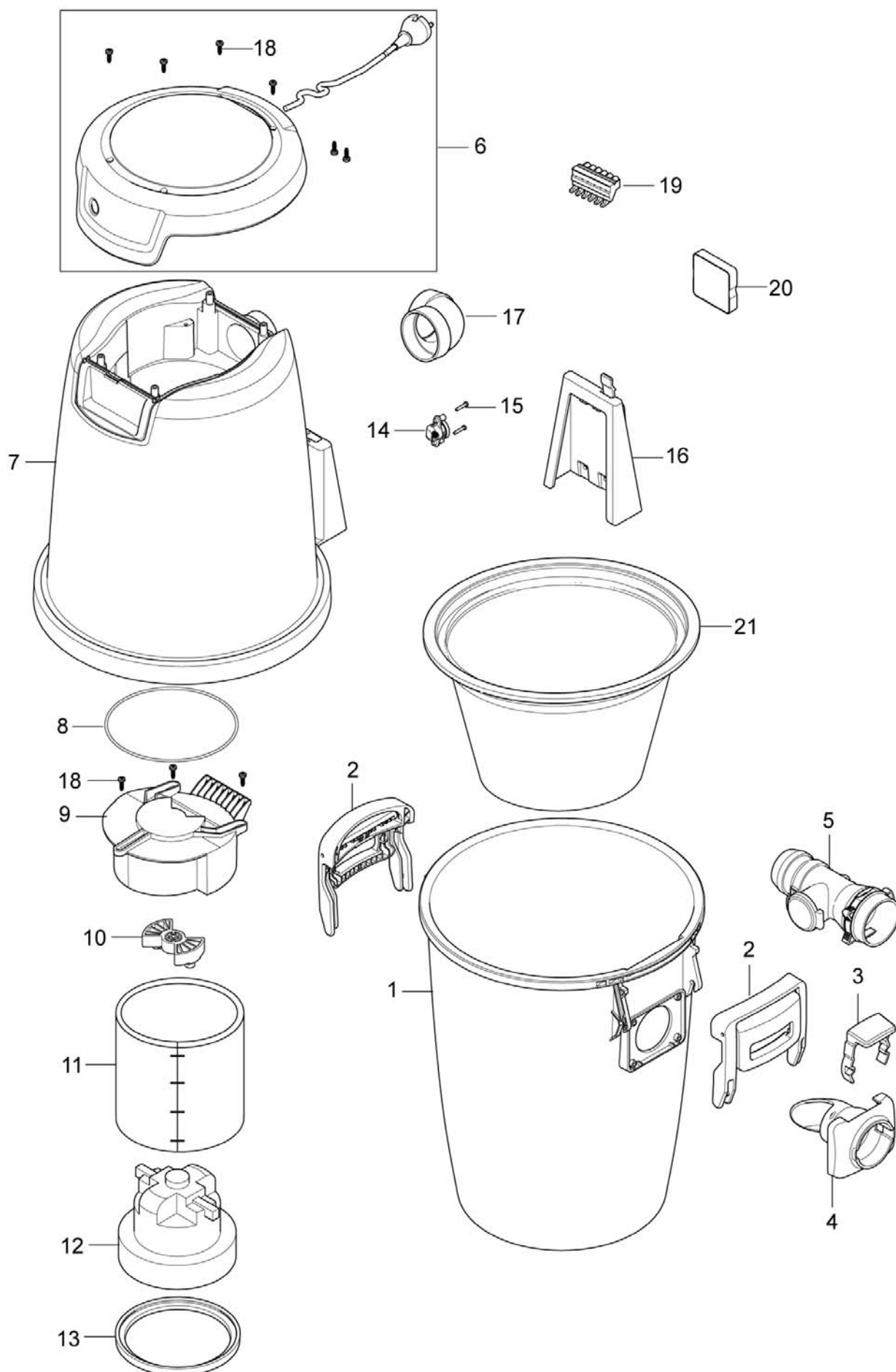
# Overview 150, 250

NILFISK SUPREME 100/150/250/LCD

11-09-2013

Part List ID  
SUPREME04

5



Overview 150, 250				11-09-2013
NILFISK SUPREME 100/150/250/LCD				Part List ID SUPREME04
				6
Pos	Part no.	Qty	Description	
1	140 8502 070	1	CONTAINER CV NILFISK	
2	107408054	2	CVUPGR HANDLE RAL9005 1PC	
3	140 7205 510	1	TRIGGER WD	
4	140 7204 520	1	INLET GWD 300-SERIES BLACK	
6	107408045	1	COVER TOP NILF EU PERF-SUPR 100-150-250	
7	140 8501 120	1	CHASSIS NILFISK CV20	
7	140 8501 130	1	CHASSIS NILFISK CV30I	
8	140 6799 010	1	GASKET L 660	
9	140 8521 000	1	NOISE TRAP	
10	107408017	1	REAR MOTOR MOUNT FOR CV	
11	107408012	1	CVUPGR SOUND REDUCTION FOAM	
12	107408008	1	CVUPGR FAN UNIT 1300W 220-240V 50-60HZ	150
12	107408010	1	CVUPGR FAN UNIT 1600W 220-240V 50-60HZ	250
13	107408016	1	FRONT MOTOR MOUNT FOR CV	
14	140 7779 010	1	VACUUM VALVE CPL.	
15	140 9214 220	2	SCREW PT K30X16 FZB	
16	147 1427 510	1	BRACKET WALL CV	
17	42000254	1	90 DEGREE SHORT ELBOW	
18	140 9214 040	9	SCREW PTK TORX 40X14 MM FZB	
19	107408020	1	6POLE CV CONNECTOR	
20	107408055	1	TRANSCEIVER BOX CPL 433MHZ	
21	140 8514 500	1	BAG FILTER	



Overview LCD				11-09-2013
NILFISK SUPREME 100/150/250/LCD				Part List ID SUPREME06
				8
Pos	Part no.	Qty	Description	
00		4	NOTE COMMENT	Screw Ejot PT KB 40x22 WN 1452
1	140 8502 070	1	CONTAINER CV NILFISK	
2	107408054	2	CVUPGR HANDLE RAL9005 1PC	
3	140 7205 510	1	TRIGGER WD	
4	140 7204 520	1	INLET GWD 300-SERIES BLACK	
6	107408049	1	NILFISK EU TOP COVER SUPREME LCD	
7	140 8501 130	1	CHASSIS NILFISK CV30I	??
8	140 6799 010	1	GASKET L 660	
9	140 8521 000	1	NOISE TRAP	
10	107408017	1	REAR MOTOR MOUNT FOR CV	
11	107408012	1	CVUPGR SOUND REDUCTION FOAM	
12	107408010	1	CVUPGR FAN UNIT 1600W 220-240V 50-60HZ	
13	107408016	1	FRONT MOTOR MOUNT FOR CV	
14	140 7779 010	1	VACUUM VALVE CPL.	
15	140 9214 220	2	SCREW PT K30X16 FZB	
16	147 1427 510	1	BRACKET WALL CV	
17	42000254	1	90 DEGREE SHORT ELBOW	
18	140 9214 040	9	SCREW PTK TORX 40X14 MM FZB	
19	107408020	1	6POLE CV CONNECTOR	
20	107408055	1	TRANSCIEVER BOX CPL 433MHZ	
21	140 8514 500	1	BAG FILTER	



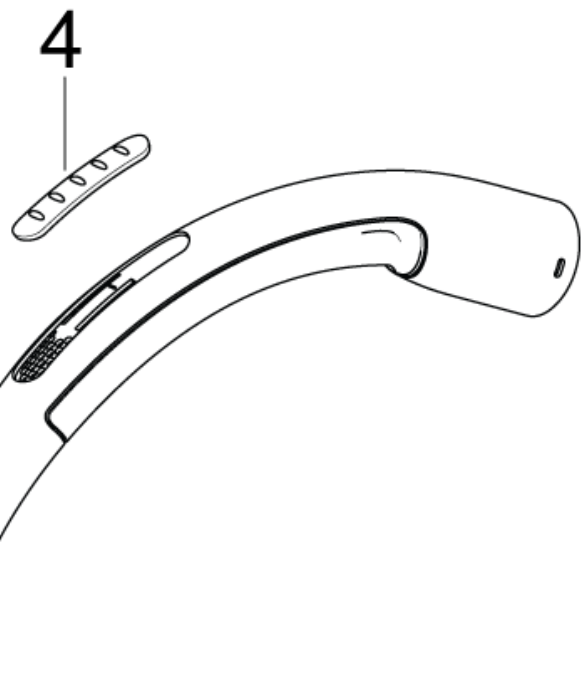
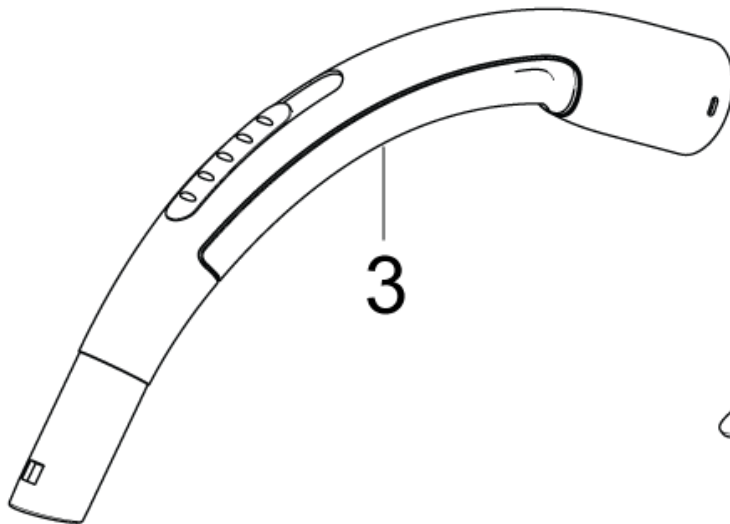
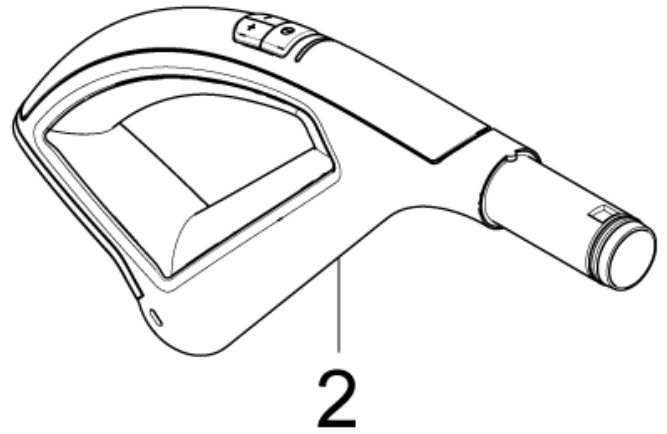
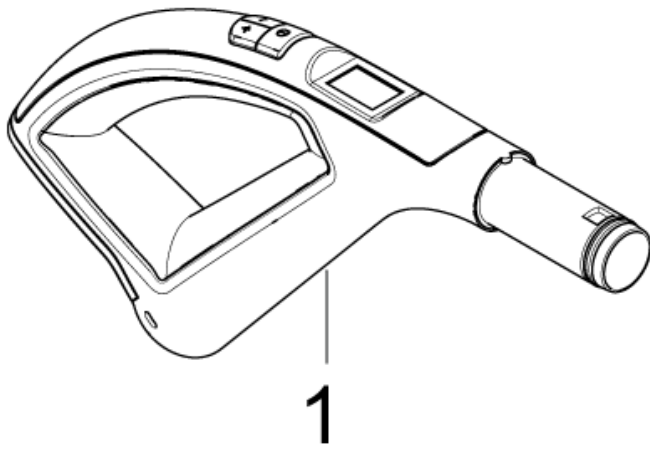
# Bent ends

NILFISK SUPREME 100/150/250/LCD

11-09-2013

Part List ID  
SUPREME12

9



# Bent ends

NILFISK SUPREME 100/150/250/LCD

11-09-2013

Part List ID  
SUPREME12

10

Pos	Part no.	Qty	Description
1	107408057	1	CV DELUXE BENT END 433MHZ
2	107408056	1	CV STD BENT END 433MHZ
3	147 0243 520	1	BENT END BASIC AND MEDIUM D32
4	147 0152 500	1	VALVE BENT END STD

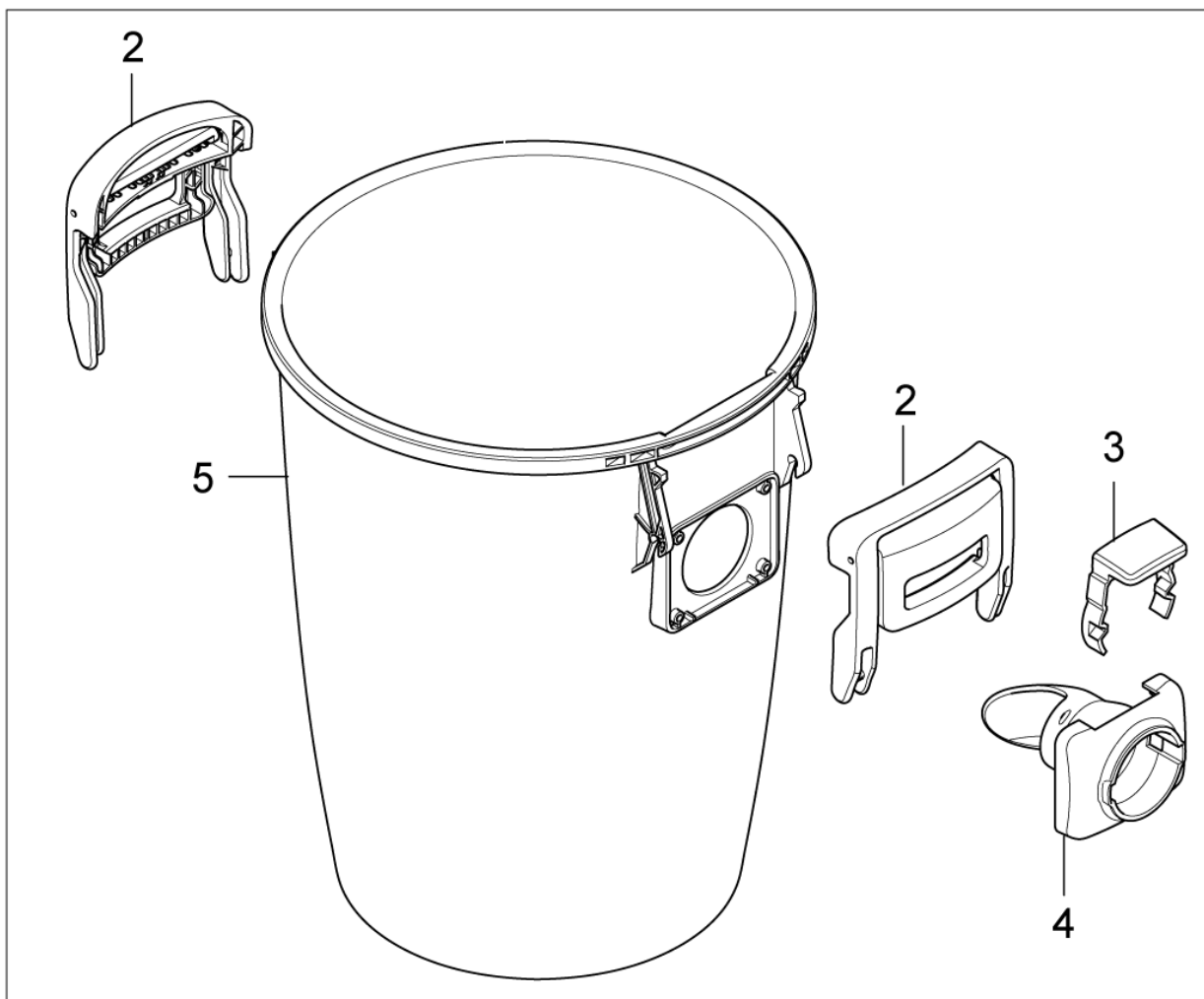
# Black dust container

NILFISK SUPREME 100/150/250/LCD

11-09-2013

Part List ID  
SUPREME14

11



<div>Black dust container</div> <div>NILFISK SUPREME 100/150/250/LCD</div>				11-09-2013
				Part List ID SUPREME14
				12
Pos	Part no.	Qty	Description	
1	107408052	1	BLACK DUST CONTAINER W. FOLDING HANDLES	
2	107408054	2	CVUPGR HANDLE RAL9005 1PC	
3	140 7205 510	1	TRIGGER WD	
4	140 7204 520	1	INLET GWD 300-SERIES BLACK	
5	140 8502 070	1	CONTAINER CV NILFISK	

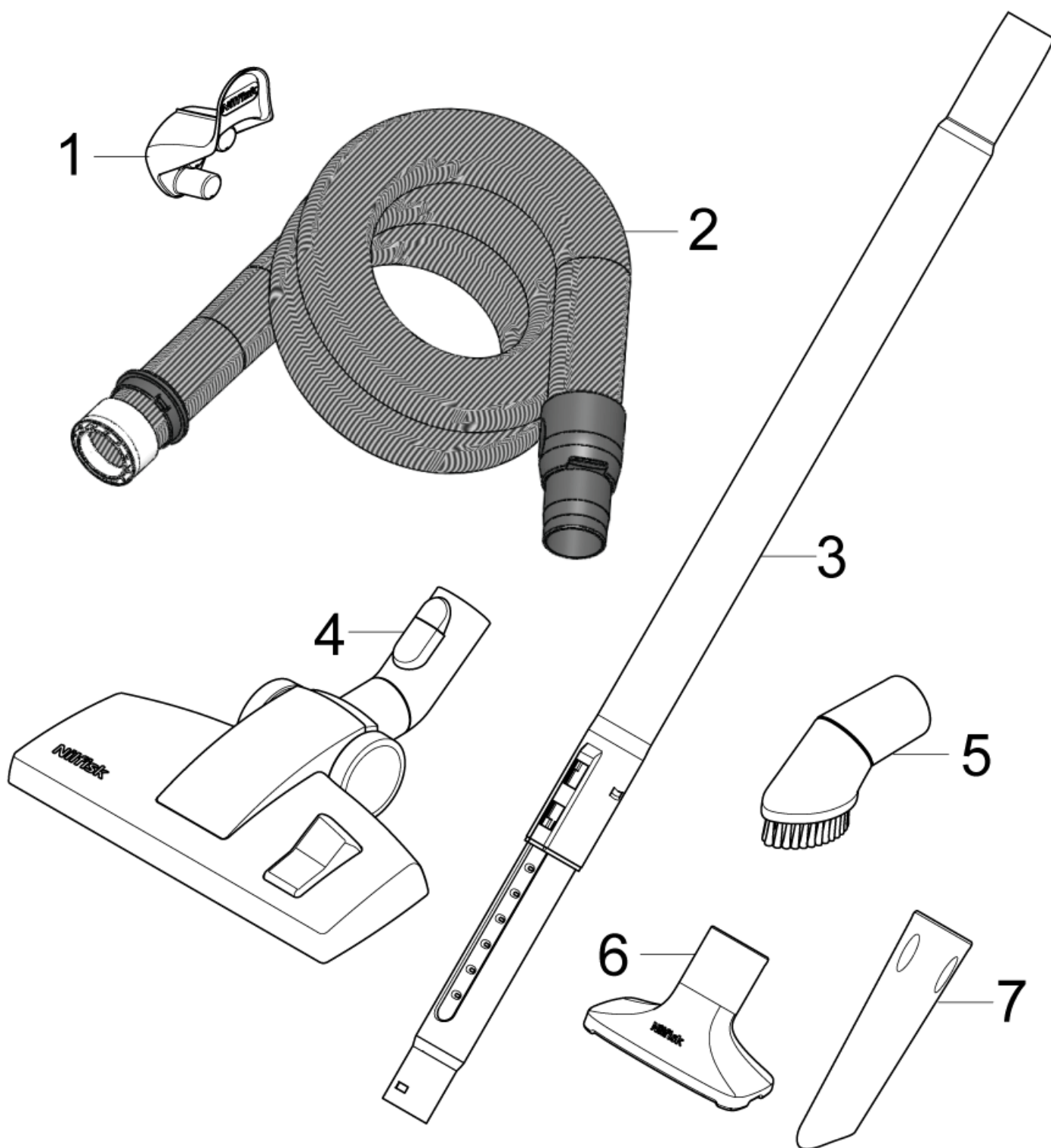
# 100 Accessories

NILFISK SUPREME 100/150/250/LCD

11-09-2013

Part List ID  
SUPREME08

13



# 100 Accessories

## NILFISK SUPREME 100/150/250/LCD

11-09-2013

Part List ID  
SUPREME08

14

Pos	Part no.	Qty	Description
0	107408024	1	BOX FOR SMALL NILFISK CV2.5 Not illustrated
0	107408028	1	BIG CV MACHINE BOX INLAY Not illustrated
1	107408032	1	NILFISK CV HOSEHANGER
2	107408014	1	CONICAL CV HOSE 9M - FOR REMOTE HOSE
2	107408015	1	CONICAL CV HOSE 12M - FOR REMOTE HOSE
2	107408018	1	CONICAL CV HOSE 9M - FOR MANUAL HOSE
2	107408019	1	CONICAL CV HOSE 12M - FOR MANUAL HOSE
3	107408043	1	NILFISK NEW TELESCOPIC TUBE
4	107408042	1	NILFISK NEW COMBI NOZZLE
5	107408040	1	NILFISK NEW BRUSH NOZZLE
6	107408041	1	NILFISK NEW UPHOLSTERY NOZZLE
7	107408039	1	NILFISK NEW CREVICE NOZZLE

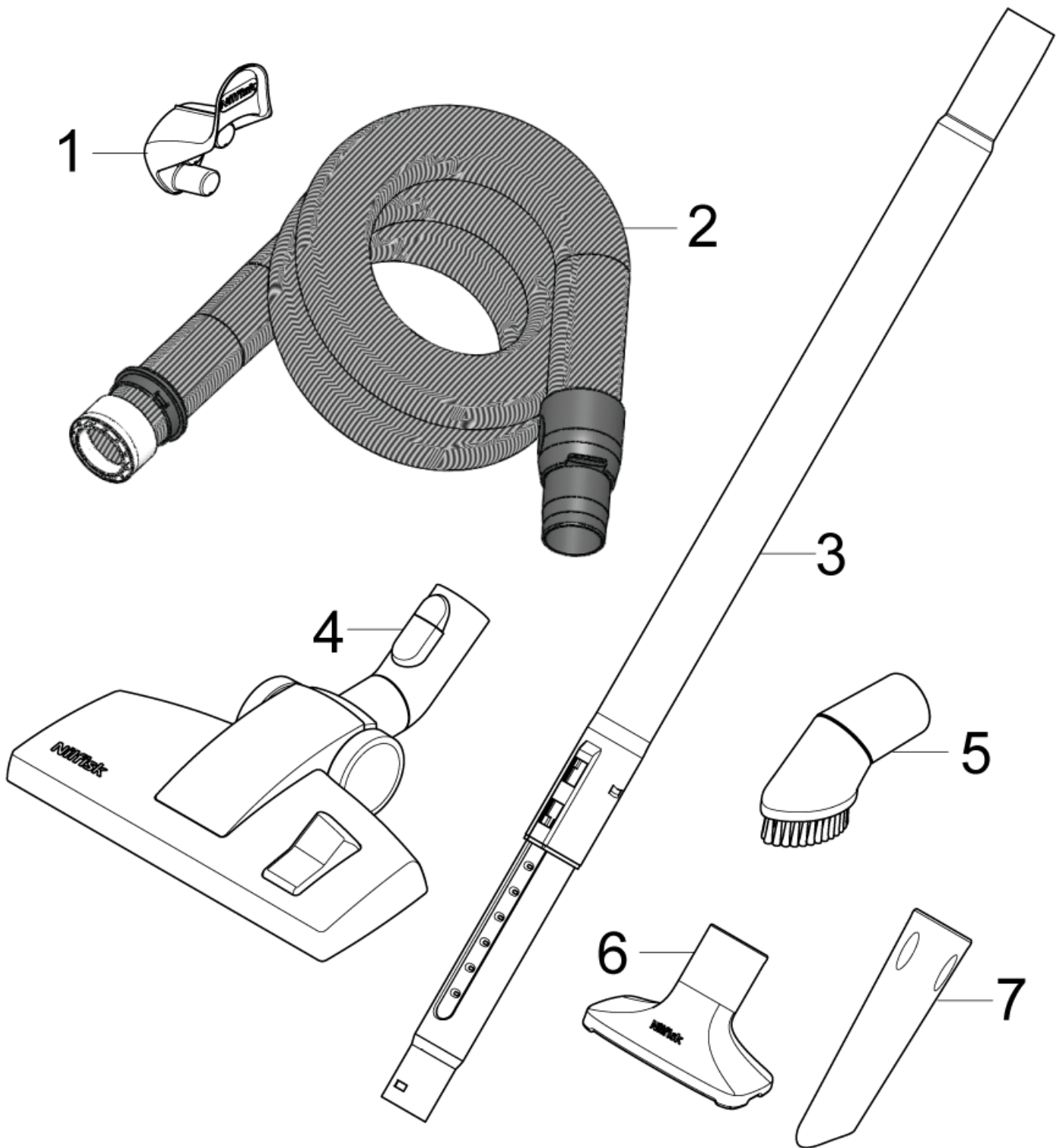
# 150, 250, LCD Accessories

NILFISK SUPREME 100/150/250/LCD

11-09-2013

Part List ID  
SUPREME10

15



# 150, 250, LCD Accessories

NILFISK SUPREME 100/150/250/LCD

11-09-2013

Part List ID  
SUPREME10

16

Pos	Part no.	Qty	Description
0	107408025	1	BOX FOR BIG NILFISK CV2.5 Not illustrated
0	107408028	1	BIG CV MACHINE BOX INLAY Not illustrated
1	107408032	1	NILFISK CV HOSEHANGER
2	107408014	1	CONICAL CV HOSE 9M - FOR REMOTE HOSE
2	107408015	1	CONICAL CV HOSE 12M - FOR REMOTE HOSE
2	107408018	1	CONICAL CV HOSE 9M - FOR MANUAL HOSE
2	107408019	1	CONICAL CV HOSE 12M - FOR MANUAL HOSE
3	107408043	1	NILFISK NEW TELESCOPIC TUBE
4	107408042	1	NILFISK NEW COMBI NOZZLE
5	107408040	1	NILFISK NEW BRUSH NOZZLE
6	107408041	1	NILFISK NEW UPHOLSTERY NOZZLE
7	107408039	1	NILFISK NEW CREVICE NOZZLE



# RECOMMENDED SPARE PARTS

NILFISK SUPREME 100/150/250/LCD

11-09-2013

Part List ID  
SUPREME16

17

No Drawing For Part List

# RECOMMENDED SPARE PARTS

NILFISK SUPREME 100/150/250/LCD

11-09-2013

Part List ID  
SUPREME16

18

Pos	Part no.	Qty	Description
	107408008	1	CVUPGR FAN UNIT 1300W 220-240V 50-60HZ
	107408010	1	CVUPGR FAN UNIT 1600W 220-240V 50-60HZ
	107408012	1	CVUPGR SOUND REDUCTION FOAM
	107408014	1	CONICAL CV HOSE 9M - FOR REMOTE HOSE
	107408015	1	CONICAL CV HOSE 12M - FOR REMOTE HOSE
	107408016	1	FRONT MOTOR MOUNT FOR CV
	107408017	1	REAR MOTOR MOUNT FOR CV
	107408018	1	CONICAL CV HOSE 9M - FOR MANUAL HOSE
	107408019	1	CONICAL CV HOSE 12M - FOR MANUAL HOSE
	107408020	1	6POLE CV CONNECTOR
	107408039	1	NILFISK NEW CREVICE NOZZLE
	107408040	1	NILFISK NEW BRUSH NOZZLE
	107408041	1	NILFISK NEW UPHOLSTERY NOZZLE
	107408042	1	NILFISK NEW COMBI NOZZLE
	107408043	1	NILFISK NEW TELESCOPIC TUBE
	107408045	1	COVER TOP NILF EU PERF-SUPR 100-150-250
	107408054	1	CVUPGR HANDLE RAL9005 1PC
	107408055	1	TRANSCEIVER BOX CPL 433MHZ
	107408056	1	CV STD BENT END 433MHZ
	107408057	1	CV DELUXE BENT END 433MHZ