

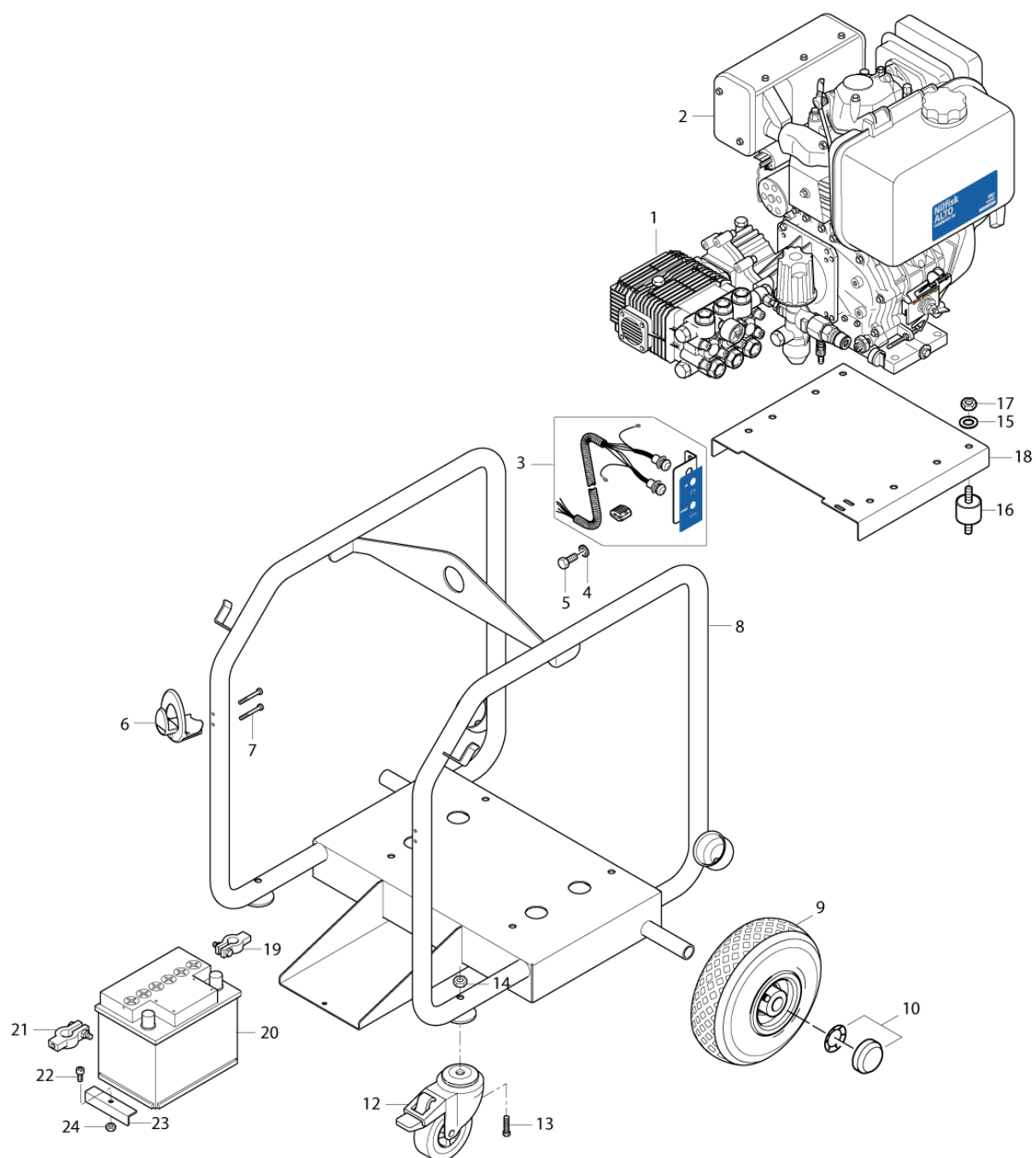
PARTS LIST



2016.06.20

TABLE OF CONTENTS

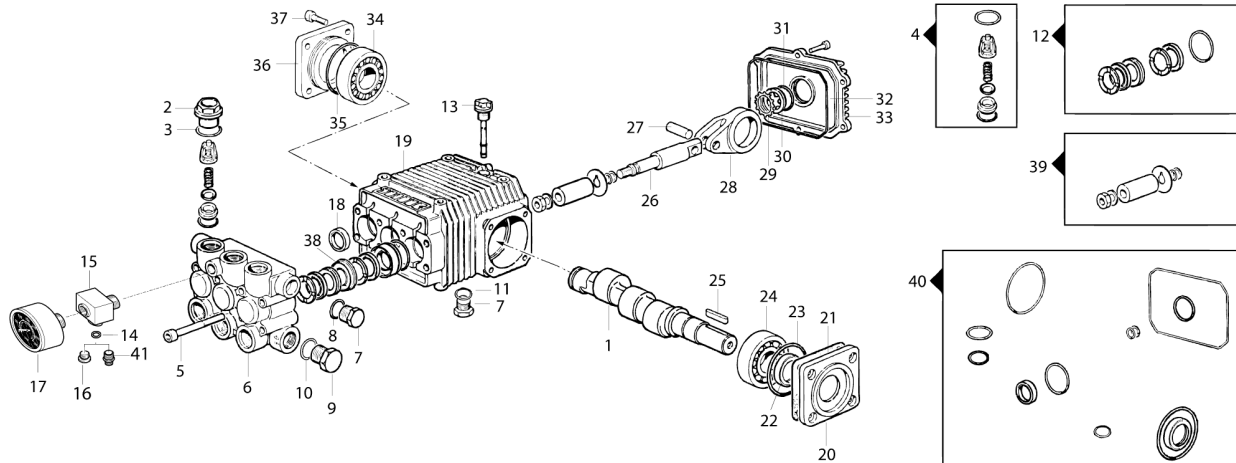
| | |
|------------------------------------|----|
| Rahmen und Motor POSEIDON PE..... | 1 |
| Pumpe 5-54 DE..... | 3 |
| Regelsicherheitsblock 5-54 DE..... | 5 |
| Gearbox..... | 7 |
| Drosselkontrolle - PE XT..... | 9 |
| Zubehör DE..... | 11 |
| Schlauchtrommel - PE XT..... | 13 |
| Recommended spare parts..... | 15 |



| Pos. | Artikel-Nr. | Menge | Variante | Notes |
|------|-------------|-------|------------------------------------|-------|
| 1 | 102202535 | 1 | PUMP 5-54 | |
| 2 | 103822188 | 1 | MOTOR L100AE | |
| 3 | 106162520 | 1 | ELECTRIC SYSTEM DE | |
| 4 | 1801182 | 2 | Federring 8,1 | |
| 5 | 1800150 | 2 | Schraube M8 x 30 8.8 | |
| 6 | 301000808 | 2 | Halter | |
| 7 | 909100149 | 4 | Ejotschraube K50x50 WN 14 | |
| 8 | 106162733 | 1 | FRAME | |
| 9 | 102013555 | 2 | Rad | |
| 10 | 2004265 | 2 | Kappe | |
| 12 | 102013563 | 2 | WHEEL | |
| 13 | | 2 | Screw M10x 40 ISO 4017 | [1] |
| 14 | 1801257 | 2 | Mutter | |
| 15 | 1800317 | 4 | Scheibe | |
| 16 | 1801240 | 4 | Gummiaufhaengung | |
| 17 | 1801257 | 4 | Mutter | |
| 18 | 106162731 | 1 | MOTOR PLATE | |
| 19 | 103821955 | 1 | BATTERY TERMINAL PLUS POLE | |
| 20 | 3804523 | 1 | Batterie 12V-44 Ah | |
| 21 | 103821956 | 1 | BATTERY TERMINAL -NEGATIVE | |
| 22 | 2806 | 1 | Sechskantschraube M6x25 | |
| 23 | 4808991 | 1 | BATTERY HOLDER | |
| 24 | 33158 | 1 | Sechskantmutter M6 ISO7042 VA (A2) | |

Part Notes:

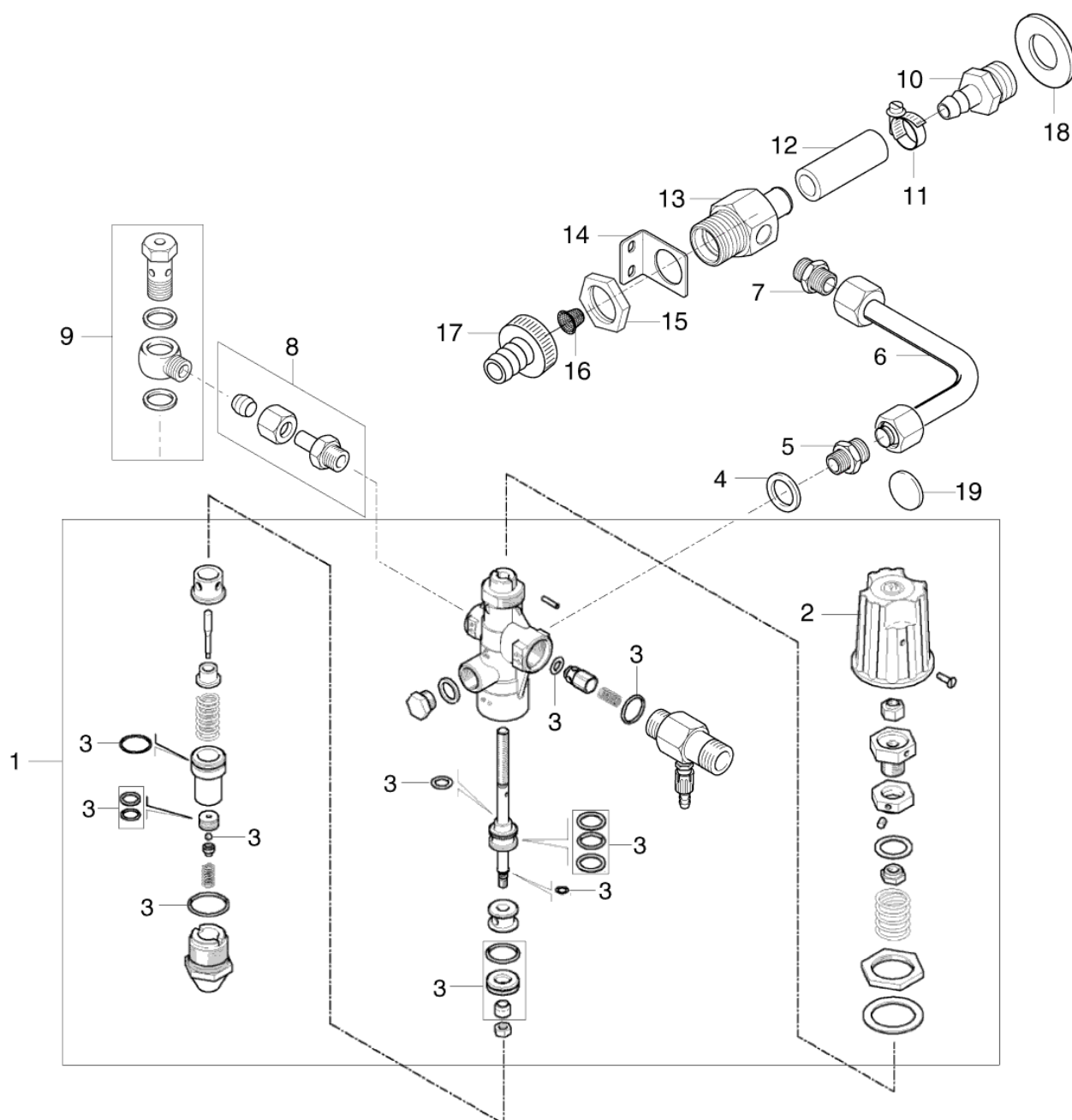
[1] - Screw M10x 40 ISO 4017



| Pos. | Artikel-Nr. | Menge | Variante | Notes |
|------|-------------|-------|---------------------------|-------|
| 00 | 102202535 | 1 | PUMP 5-54 | |
| 1 | 31000100 | 1 | CRANKSHAFT P5-54DE | |
| 2 | 106162566 | 6 | Verschlussschraube | |
| 3 | 3000825 | 6 | O-Ring 20,24x2,62 | |
| 4 | 106162576 | 1 | Satz Ventile | |
| 5 | 106162581 | 8 | SCREW M8X70 | |
| 6 | 106162580 | 1 | CYLINDER HEAD Ø 18 | |
| 7 | 301002572 | 2 | Nippel 3/4 Poseidon | |
| 8 | 106162560 | 1 | Dichtring | |
| 9 | 106162565 | 1 | PLUG | |
| 10 | 106162561 | 1 | Dichtring | |
| 11 | 6127016 | 1 | O-RING 2.0 X 14 NBR 70 | |
| 12 | 106162582 | 1 | Dichtungskit für Kolben | |
| 13 | 106162564 | 1 | Ölmesstab | |
| 14 | 101814735 | 1 | Dichtring | |
| 15 | 101609396 | 1 | Verbindungsstück | |
| 16 | 4443 | 1 | Shr Vers. G1/8 DIN 9 | |
| 17 | 301000246 | 1 | Manometer | |
| 18 | 106162853 | 3 | Öldichtung | |
| 19 | 106162858 | 1 | PUMP CRANKCASE | |
| 20 | 106162863 | 1 | FLANGE | |
| 21 | 106162867 | 1 | SHIM 62 - 0.25MM | |
| 21 | 106162865 | 1 | SHIM 62 - 0.10MM | |
| 21 | 106162864 | 1 | SHIM 62 - 0.05MM | |
| 21 | 106162866 | 1 | SHIM 62 - 0.19MM | |
| 22 | 106162868 | 1 | Öldichtung 25X52X7 | |
| 23 | 106162869 | 1 | O-Ring ¥1,78X56,87 NBR 70 | |
| 24 | 106162870 | 1 | Kugellager 25X62X18,2 | |
| 25 | 106162871 | 1 | KEY 8X7X30 UNI 6604-6 | |
| 26 | 106162855 | 1 | Kolbenführung | |
| 27 | 106162856 | 1 | Bolzen | |
| 28 | 106162857 | 1 | Pleuel | |
| 29 | 106162587 | 1 | Ring Ø 28 | |
| 30 | 106162860 | 1 | Ölschauglas | |
| 31 | 106162861 | 1 | O-RING 1.78X23.52 NBR 70 | |
| 32 | 106162862 | 1 | O-RING 3X108 NBR 70SH | |
| 33 | 106162601 | 1 | CRANKCASE COVER | |
| 34 | 106162870 | 1 | Kugellager 25X62X18,2 | |
| 35 | 106162869 | 1 | O-Ring ¥1,78X56,87 NBR 70 | |
| 36 | 106162874 | 1 | FLANGE | |
| 37 | 106162875 | 1 | SCREW M6X20 UNI 5931 - 8. | |
| 38 | 31000102 | 1 | TRUST COLLAR KIT | [1] |
| 39 | 106162854 | 1 | Satz Kolben | |
| 40 | 106162604 | 1 | Dichtungssatz | |
| 41 | 1821 | 1 | Verbindungsstück | |

Part Notes:

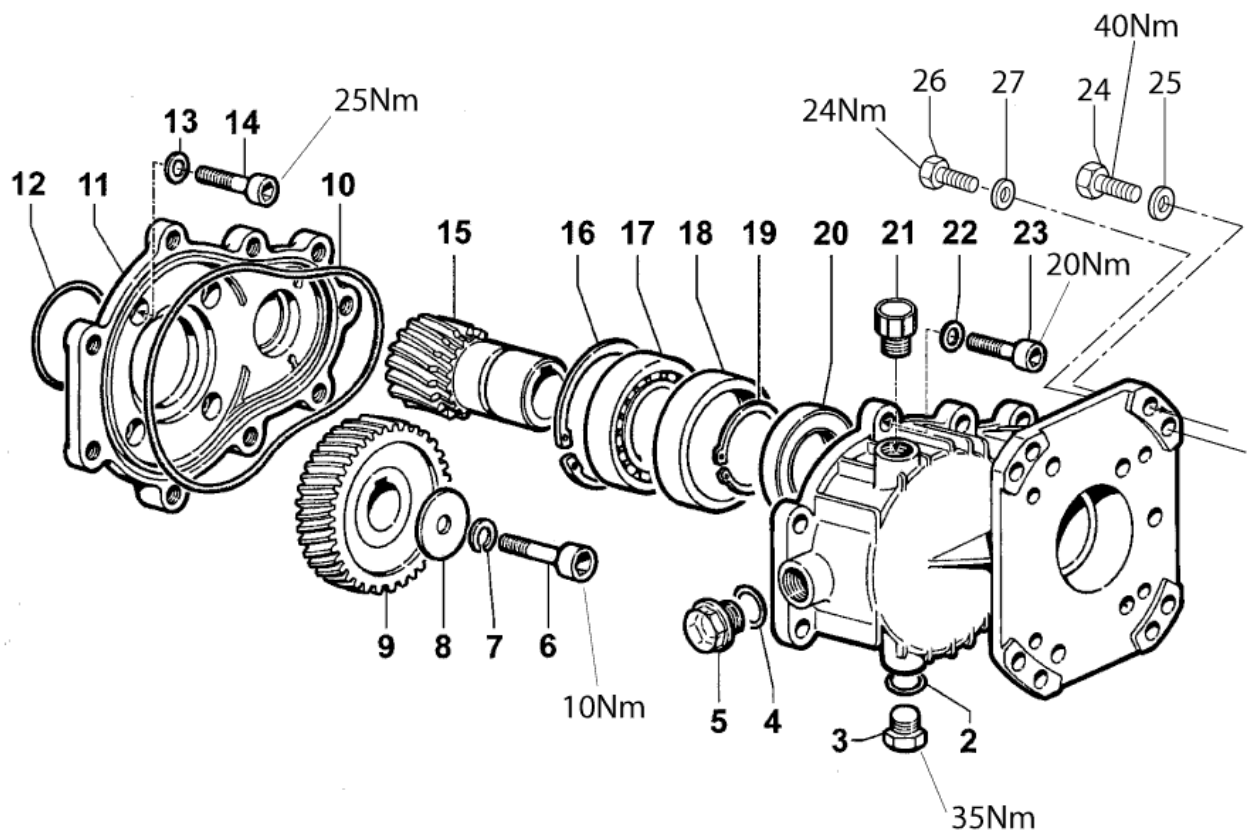
[1] - (3 pcs.)



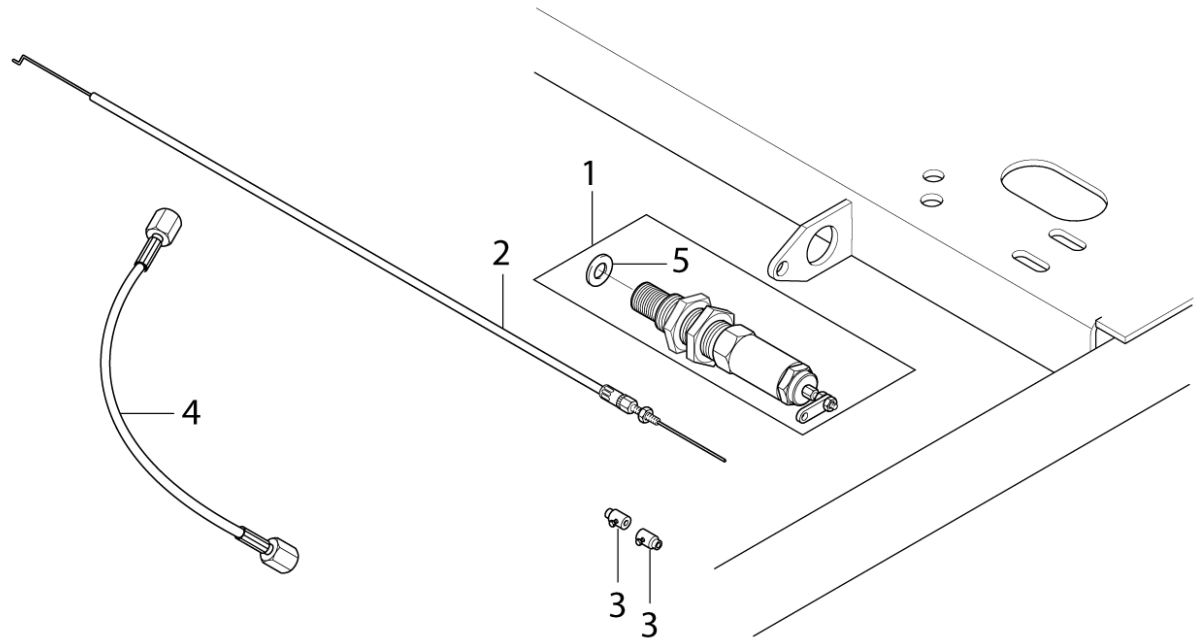
| Pos. | Artikel-Nr. | Menge | Variante | Notes |
|------|-------------|-------|--|-------|
| 00 | 106162707 | 1 | Regelsicherheitsblock | |
| 2 | 106162579 | 1 | Regulierknopf | |
| 3 | 106162578 | 1 | Dichtungssatz Regelsicherheitsblock | |
| 4 | 1801075 | 1 | Dichtring | |
| 5 | 1601079 | 1 | Verbindungsstück | |
| 6 | 106162737 | 1 | TUPE COMPL. | |
| 7 | 1603077 | 1 | Versch. XGE 12L R1/4-M18 | |
| 8 | 6220554 | 1 | Verbindungsstück | |
| 9 | 101609397 | 1 | Hohlschraube | |
| 10 | 101609359 | 1 | Schlauchnippel | |
| 11 | 8298 | 1 | Schlauchselle SGL 16-27 | [1] |
| 12 | 106408242 | 1 | HOSE 5/8INCH - 2 METERS | |
| 13 | 106162695 | 1 | FILTERHOUSING | |
| 14 | 106162688 | 1 | SUPPORT | |
| 15 | 1800341 | 1 | Gegenmutter 3/4 | |
| 16 | 101117926 | 1 | Sieb | |
| 17 | 61369 | 1 | Schlauchtülle ø20 R3/4" vormontiert CuZn | |
| 18 | 1807932 | 1 | Dichtring | |
| 19 | 106162740 | 1 | COPPER WASHER Ø14.5X2 | [2] |

Part Notes:

- [1] - PLEASE CONTACT CARWASH DIRECTLY
- [2] - Only for by-pass accessory



| Pos. | Artikel-Nr. | Menge | Variante | Notes |
|------|-------------|-------|---------------------------------|-------|
| 1-23 | 106162821 | 1 | Getriebe | |
| 2 | 106162800 | 1 | O-RING | |
| 3 | 301002577 | 1 | Verschlussschraube | |
| 4 | 106162801 | 1 | O-RING | |
| 5 | 106162802 | 1 | Ölschauglas | |
| 6 | 106162803 | 1 | SCREW | |
| 7 | 106162804 | 1 | SPECIAL WASHER | |
| 8 | 106162805 | 1 | WASHER | |
| 9 | 106162806 | 1 | Antriebsrad | |
| 10 | 106162807 | 1 | O-Ring | |
| 11 | 106162808 | 1 | FLANGE | |
| 12 | 106162809 | 1 | O-Ring | |
| 13 | 106162810 | 4 | WASHER WITH SEALS | |
| 14 | 106162811 | 4 | SCREW | |
| 15 | 106162812 | 1 | Abtriebsrad | |
| 16 | 106162813 | 1 | INNER SEEGER | |
| 17 | 106162814 | 1 | BALL BEARING | |
| 18 | 106162815 | 1 | Buchse | |
| 19 | 106162816 | 1 | OUTER SEEGER | |
| 20 | 106162817 | 1 | OIL SEAL | |
| 21 | 106162818 | 1 | Verschlussschraube | |
| 22 | 106162819 | 9 | WASHER | |
| 23 | 106162820 | 9 | SCREW | |
| 24 | 101814767 | 4 | SCREW UNC 3/8X1 | |
| 25 | 1800317 | 4 | Scheibe | |
| 26 | 32102 | 4 | HEXAGON CAP SCREW 5/16-24-1A ZN | |
| 27 | 2762 | 4 | Scheibe 8,4x1,6 ISO 7089 zn | |



| Pos. | Artikel-Nr. | Menge | Variante | Notes |
|------|-------------|-------|----------------------------|-------|
| 0- | 106162705 | 1 | AUTOMATIC THROTTLE CONTROL | [1] |
| 1 | 101118034 | 1 | Drehzahlregelung | |
| 2 | 103822152 | 1 | Gaszug | |
| 3 | 101814765 | 2 | Schraube | |
| 4 | 102406660 | 1 | Hochdruckschlauch | |
| 5 | 3000098 | 1 | Scheibe | |

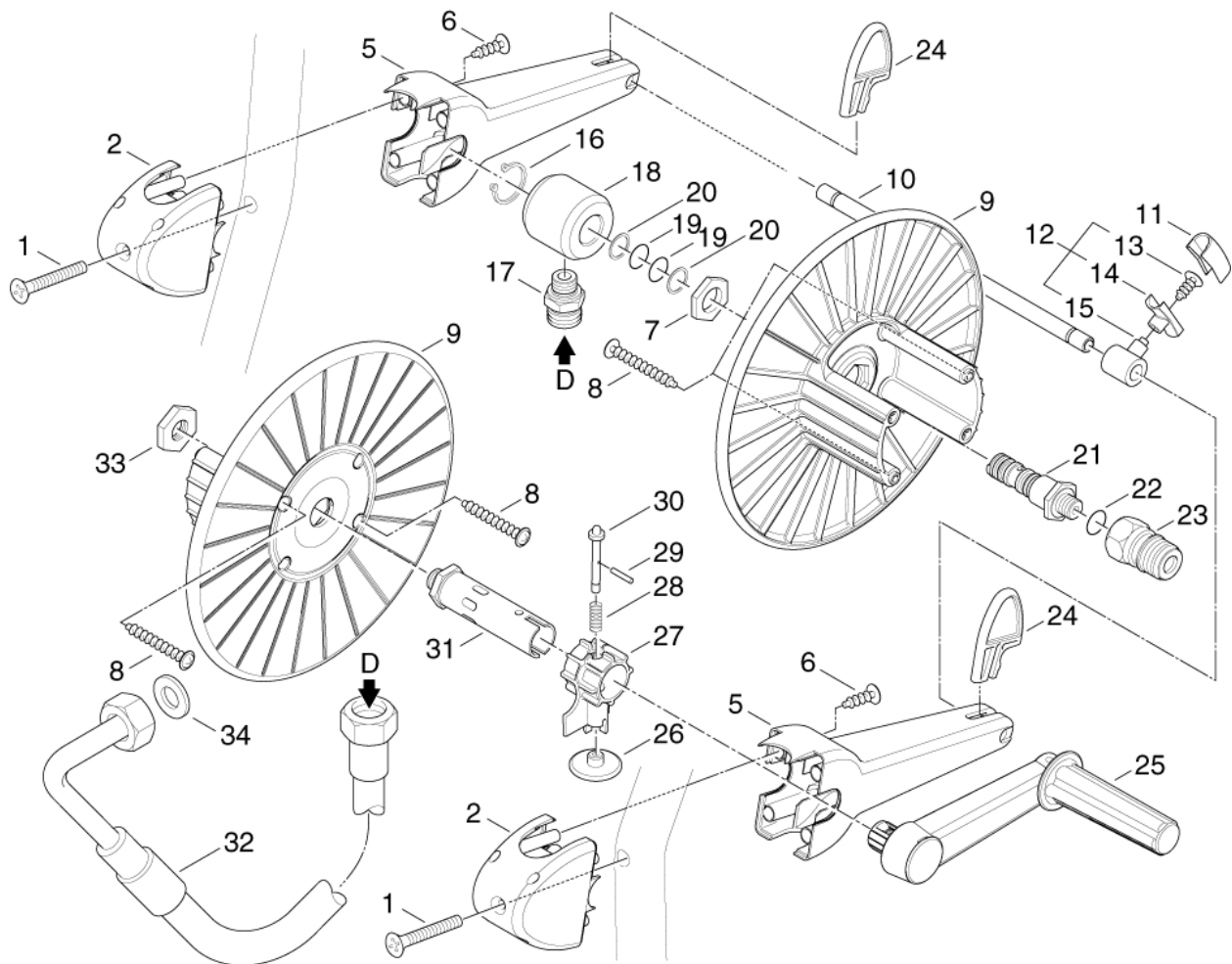
Part Notes:

[1] - NO DIRECT REPLACEMENT

**No
Diagram
Available**

**Parts List
Only**

| Pos. | Artikel-Nr. | Menge | Variante | Notes |
|------|-------------|-------|--|-------|
| 00 | 106403122 | 1 | ERGO 2000 STANDARD W. HOSE SWIVEL | |
| 1 | 101119496 | 1 | Schlauchkupplung Rep.Satz | |
| 2 | 106402281 | 1 | FLEXOPOWER PLUS 990 | |
| 3 | 101119742 | 1 | HD-Düse 0530 TORNADO | |
| 4 | 1405569 | 1 | HD-Schlauch DN8x10m 3/8 | |
| 5 | 61369 | 1 | Schlauchtülle ø20 R3/4" vormontiert CuZn | |



| Pos. | Artikel-Nr. | Menge | Variante | Notes |
|------|-------------|-------|----------------------------------|-------|
| 1 | 909100154 | 2 | Linsensenkschraube M6x45 | [1] |
| 2 | 301000809 | 2 | Halter | |
| 5 | 301000929 | 2 | Halter | |
| 6 | 1814641 | 4 | Ejotschraube K50x30 WN 14 | |
| 7 | 62696 | 1 | Sechskantmutter M24x1,5x | |
| 8 | 909100153 | 4 | Schraube 6x40 | |
| 9 | 301000775 | 2 | Trommel | |
| 10 | 107140355 | 1 | Achse | |
| 11 | 301000674 | 1 | Schlauchführung | |
| 12 | 301000780 | 1 | Schlauchführung | |
| 13 | 10028 | 1 | Ejotschraube KA50x14 WN1411 verz | |
| 14 | 301000676 | 1 | Schlauchführung | |
| 15 | 301000672 | 1 | Lagerbock | |
| 16 | 1802057 | 1 | Seegerring U 20 x1,2 | |
| 17 | 54590 | 1 | Anschlussstück | |
| 18 | 301000977 | 1 | Lagerbuchse | |
| 19 | 19620 | 2 | O-Ring 15,54x2,62 | |
| 20 | 63792 | 2 | Stützring 16,26x2,18 | |
| 21 | 301000976 | 1 | Hohlschraube | |
| 22 | 1801075 | 1 | Dichtring | |
| 23 | 1600493 | 1 | Anschlussstück | |
| 24 | 301000927 | 2 | Halter | |
| 25 | 301000733 | 1 | Kurbel | |
| 26 | 909100362 | 1 | Griff | |
| 27 | 301001010 | 1 | Gehäuse | |
| 28 | 909100151 | 1 | Feder | |
| 29 | 16067 | 1 | Spannstift 3,0x14 ISO875 | |
| 30 | 301001009 | 1 | Bolzen | |
| 31 | 301001007 | 1 | Achse | |
| 32 | 301001092 | 1 | Hochdruckschlauch DN 8, 1,2 m | |
| 33 | 909100145 | 1 | Mutter | |
| 34 | 65466 | 1 | Dichtring 8,0x15,0x1,0 DI | |

Part Notes:

[1] - STOCK COVERS GUARANTEE

**No
Diagram
Available**

**Parts List
Only**

| Pos. | Artikel-Nr. | Menge | Variante | Notes |
|------|-------------|-------|-------------------------------------|-------|
| 0A | 106162574 | 1 | Kolbendichtungskit | [1] |
| 0A | 106162575 | 1 | Dichtungssatz Kolben | [1] |
| 0A | 106162582 | 1 | Dichtungskit für Kolben | [1] |
| 0A | 106162888 | 1 | Umschaltventil | [1] |
| 0A | 106162552 | 1 | Steuerkolben | [1] |
| 0A | 31000343 | 1 | Kolbendichtungskit | [1] |
| 0A | 301002570 | 1 | Kolbenführung | [1] |
| 0A | 106162577 | 1 | PISTON SEAL KIT | [1] |
| 0A | 101117926 | 1 | Sieb | [1] |
| 0A | 106163017 | 1 | VALVE SEAT | [1] |
| 0A | 106162556 | 1 | Injektor | [1] |
| 0A | 106162553 | 1 | Druckregelventil, Kit | [1] |
| 0A | 106162599 | 1 | Pumpendichtsatz | [1] |
| 0A | 106162578 | 1 | Dichtungssatz Regelsicherheitsblock | [1] |
| 0A | 301002561 | 1 | Dichtungssatz Kolben | [2] |
| 0A | 106162604 | 1 | Dichtungssatz | [1] |
| 0A | 106162576 | 1 | Satz Ventile | [1] |
| 0A | 101117926 | 1 | Sieb | [1] |
| 0A | 301002586 | 1 | Buchse | [1] |
| 0A | 31000165 | 1 | PACKING RETAINER | [1] |
| 0A | 301002562 | 1 | Satz Ventile | [1] |
| 0A | 106162596 | 1 | Dichtungssatz | [1] |
| 0A | 106162574 | 1 | Kolbendichtungskit | [1] |
| 0A | 106162552 | 1 | Steuerkolben | [1] |
| 0A | 106163037 | 1 | Rückschlagventil | [1] |
| 0A | 106163013 | 1 | RING 15,Z19.9X2 | [1] |
| 0B | 301002547 | 1 | Satz Ventil | [3] |
| 0B | 106163039 | 1 | Dosierventil | [3] |
| 0B | 3000825 | 1 | O-Ring 20,24x2,62 | [3] |
| 0C | 106162881 | 1 | Satz Kolben | [4] |
| 0C | 128500078 | 1 | Tornade PR Düse | [4] |
| 0C | 301000246 | 1 | Manometer | [4] |
| 0C | 106162854 | 1 | Satz Kolben | [4] |
| 0C | 106162598 | 1 | Kolben Satz 14 mm | [4] |
| 0C | 102406660 | 1 | Hochdruckschlauch | [4] |
| 0C | 128500083 | 1 | Hochdruckschlauch Superflex 10m | [4] |
| 0C | 106162595 | 1 | Kolben-Kit (3 Stck.) | [4] |
| 0C | 301001092 | 1 | Hochdruckschlauch DN 8, 1,2 m | [4] |

Part Notes:

- [1] - A
- [2] - A
1 PH USE PN 31000343 - 3PH USE 31001029
- [3] - B
- [4] - C

