

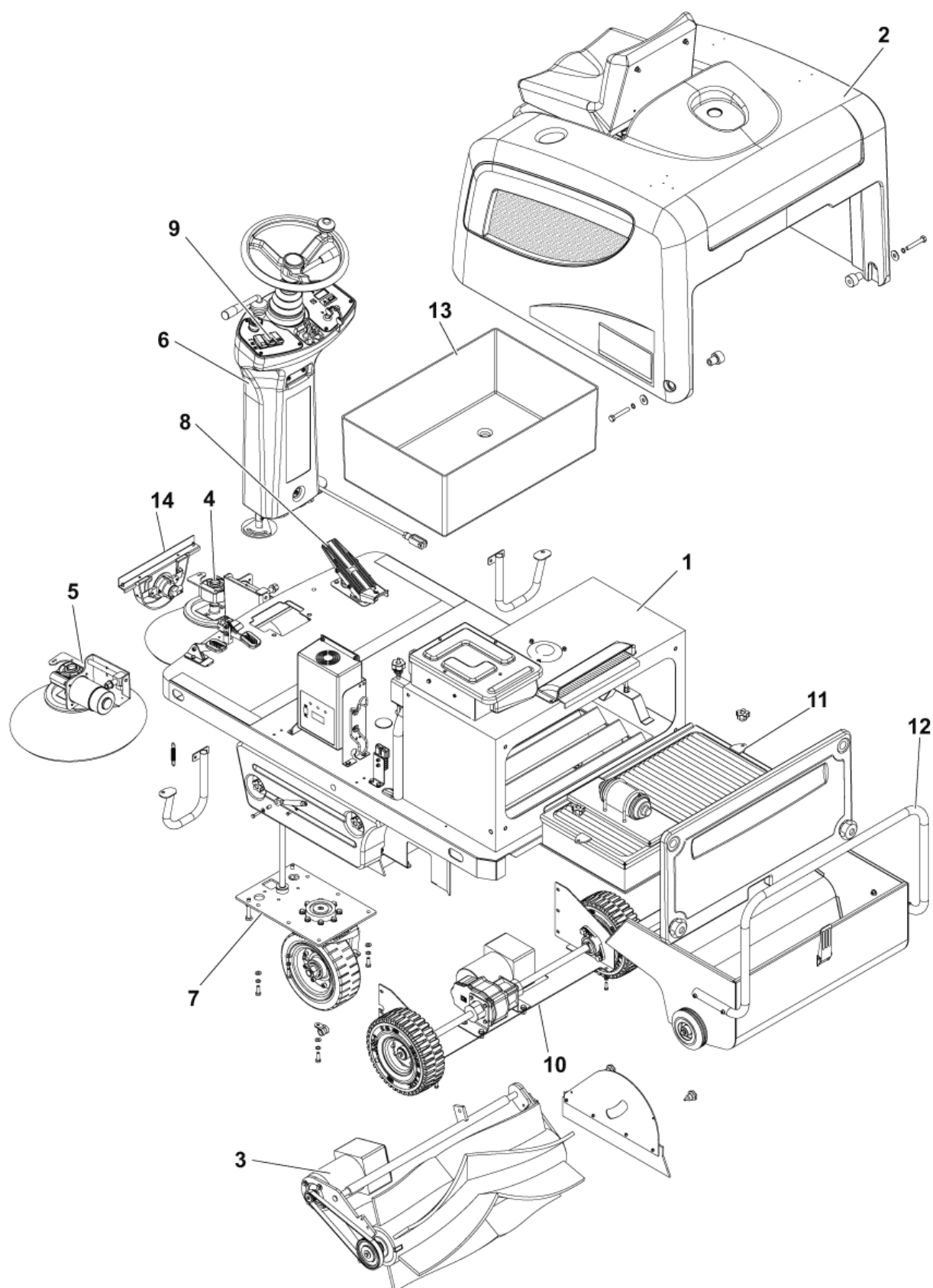
PARTS LIST



2019.02.20

TABLE OF CONTENTS

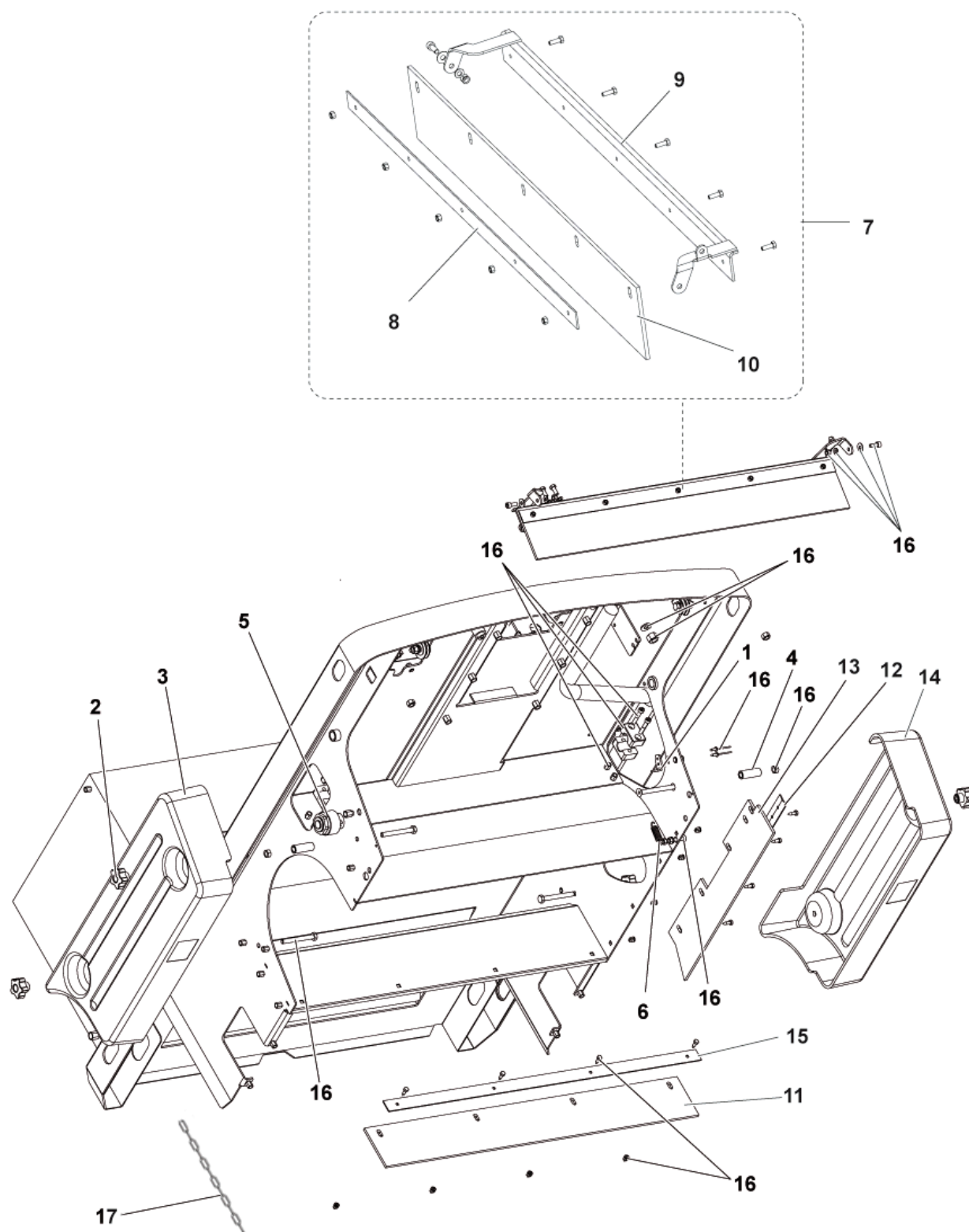
GENERAL VIEW	1
CHASSIS ASSEMBLY 1	3
CHASSIS ASSEMBLY 2	5
BONNET SYSTEM	7
MAIN BROOM ASSEMBLY	9
RIGHT SIDE BROOM ASSY	11
LEFT SIDE BROOM ASSY	13
STEERING SYSTEM	15
FRONT WHEEL	17
PEDAL ASSEMBLIES 1	19
PEDAL ASSEMBLIES 2	21
CONTROL PANELS SYSTEM	23
DRIVE SYSTEM	25
DUST CONTROL SYSTEM	27
WASTE CONTAINER ASSEMBLY	29
ELECTRICAL COMPONENTS 1	31
ELECTRICAL COMPONENTS 2	33
KIT VACUUM CLEANER	35
KIT WORKING LIGHT - BATTERY CHARGER	37
KIT FLASHING BEACON - BROOM BUMPER - OVERHEAD GUARD	39
RECOMMENDED SPARE PARTS	41



Pos.	Artikel-Nr.	Menge	Variante	Notes
1		1	CHASSIS ASSEMBLY	[1]
2		1	BONNET SYSTEM	[2]
3		1	MAIN BROOM ASSEMBLY	[3]
4		1	RIGHT SIDE BROOM ASSY	[4]
5		1	LEFT SIDE BROOM ASSY	[5]
6		1	STEERING SYSTEM	[6]
7		1	FRONT WHEEL ASSEMBLY	[7]
8		1	PEDAL ASSEMBLIES	[8]
9		1	CONTROL PANELS SYSTEM	[9]
10		1	DRIVE SYSTEM	[10]
11		1	FILTER ASSEMBLY	[11]
12		1	WASTE CONTAINER ASSY	[12]
13		1	ELECTRICAL COMPONENTS	[13]
14		1	ACCESSORIES	[14]

Part Notes:

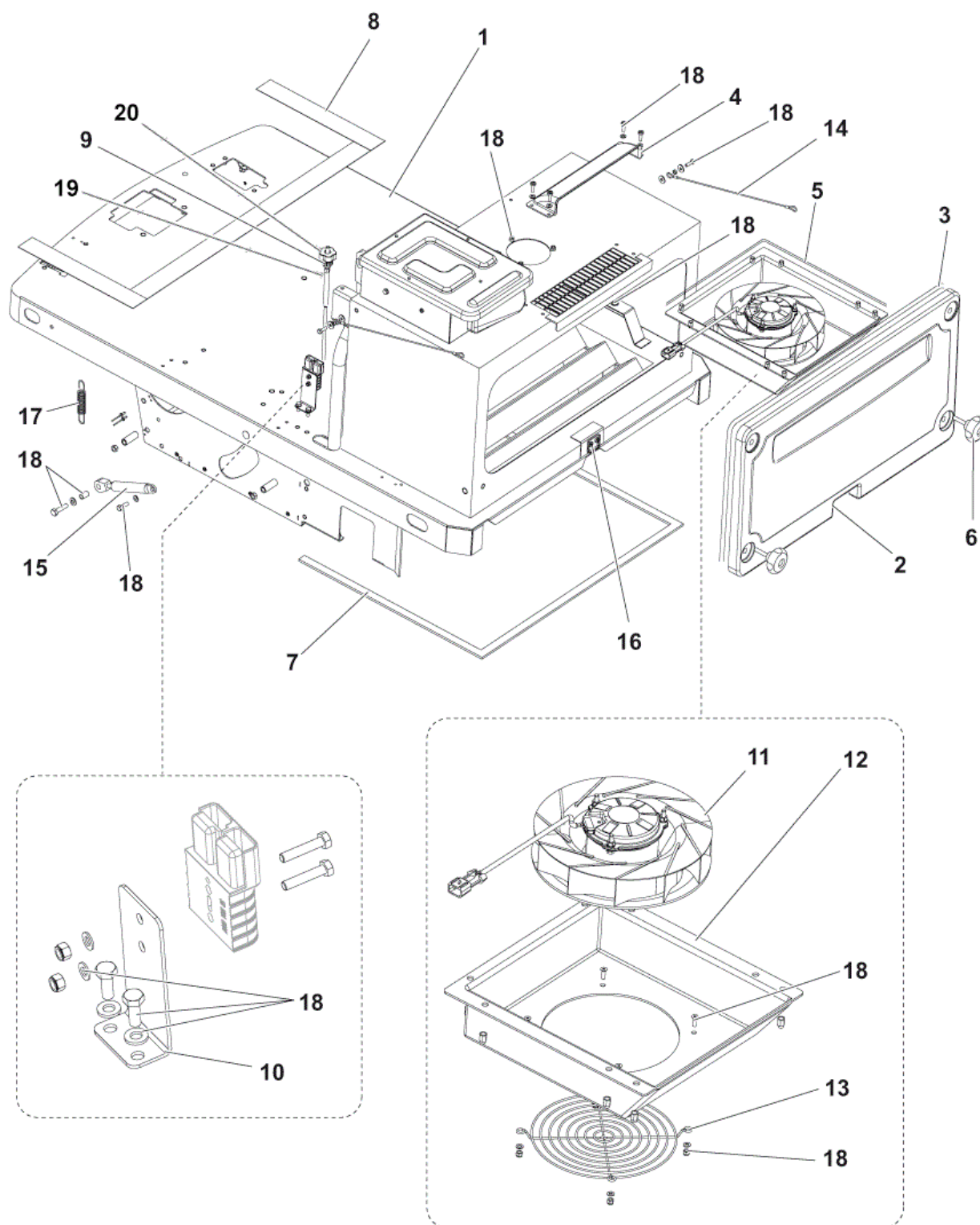
- [1] - CHASSIS ASSEMBLY 1
- [2] - BONNET SYSTEM
- [3] - MAIN BROOM ASSEMBLY
- [4] - RIGHT SIDE BROOM ASSY
- [5] - LEFT SIDE BROOM ASSY
- [6] - STEERING SYSTEM
- [7] - FRONT WHEEL
- [8] - PEDAL ASSEMBLIES 1
- [9] - CONTROL PANELS SYSTEM
- [10] - DRIVE SYSTEM
- [11] - DUST CONTROL SYSTEM
- [12] - WASTE CONTAINER ASSEMBLY
- [13] - ELECTRICAL COMPONENTS 1
- [14] - KIT VACUUM CLEANER



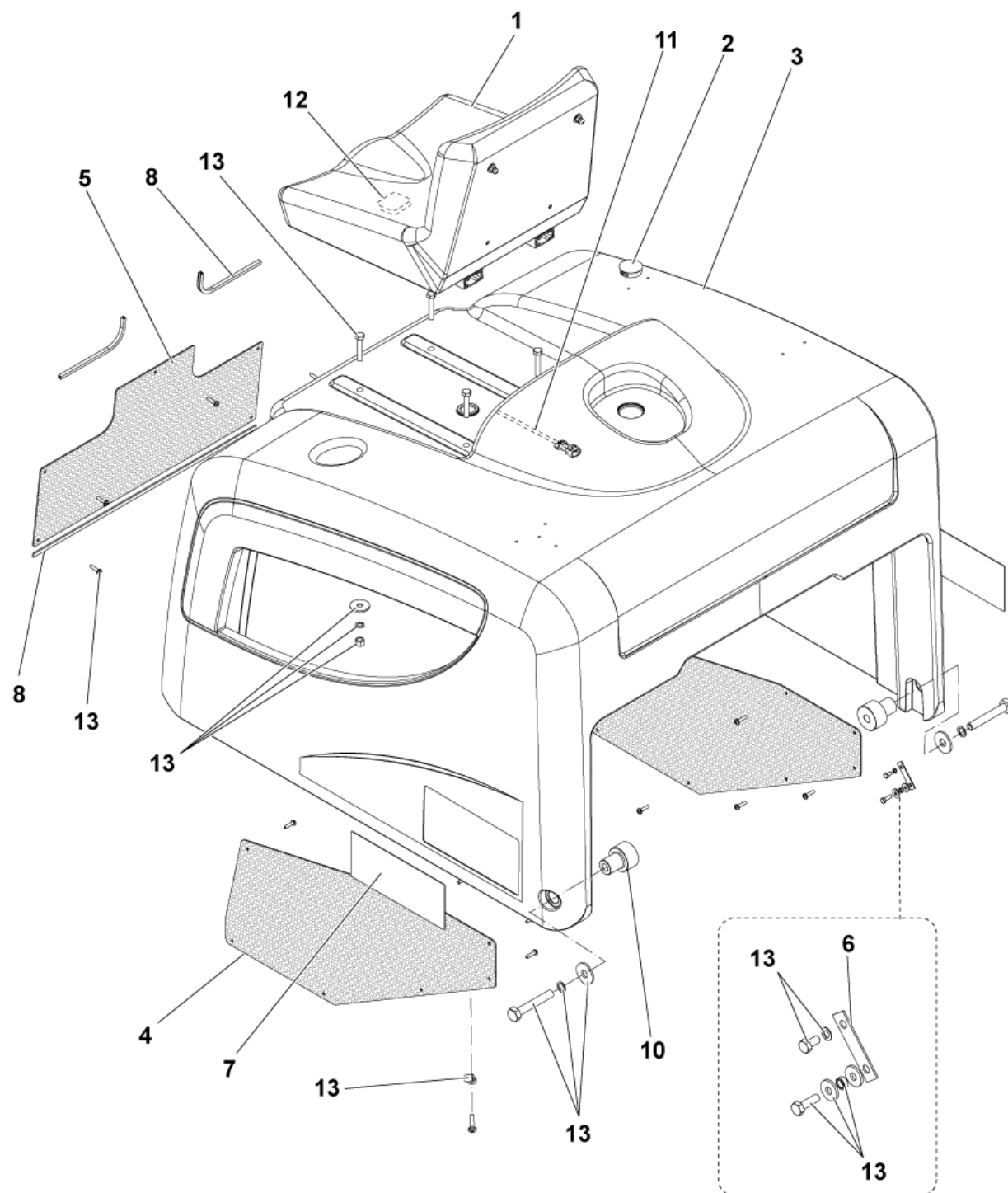
Pos.	Artikel-Nr.	Menge	Variante	Notes
1	145 5126 000	1	Klammer	
2	9100002017	4	KNOB M8 SIP	
3	146 2210 000	1	Abdeckung re SR 1100S	
4	146 2426 000	4	Distanzstück	
5	146 2487 000	1	Hupe 5-32V	
6	145 9579 000	1	Feder 12x1,6x45	
7	1464098000	1	Befestigungsschiene Kit	
8	145 1970 000	1	PLATE FRONT SKIRT 5110	
9	1464061000	1	Befestigungsschiene	
10	1464062000	1	Frontschürze	
11	145 1971 000	1	Spritz Gummi, hinten	
12	145 5929 000	1	Halter SR 1100 ECO	
13	145 5927 000	1	Spritzgummi seitlich	
14	146 2209 000	1	Abdeckung li SR 1100S	
15	145 1972 000	1	Spritzgummileiste hinten	
16	1464097000	1	Befestigungskit	
17	1466135000	1	ANTISTATIC KIT	[1]
18	146 2744 000	1	Seitenschürze, n. mark.	[2]

Part Notes:

- [1] - Installation Instructions 1466136000
 [2] - NOT SHOWN - OPTIONAL



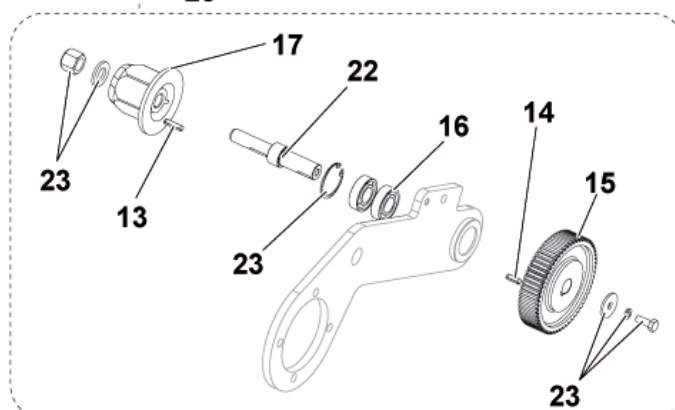
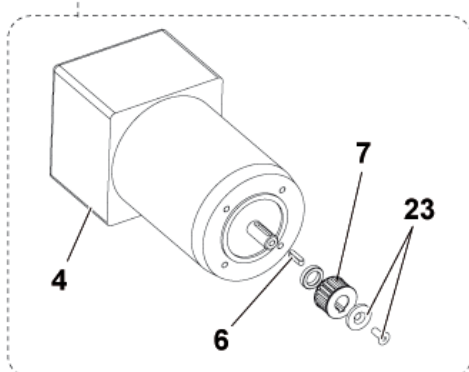
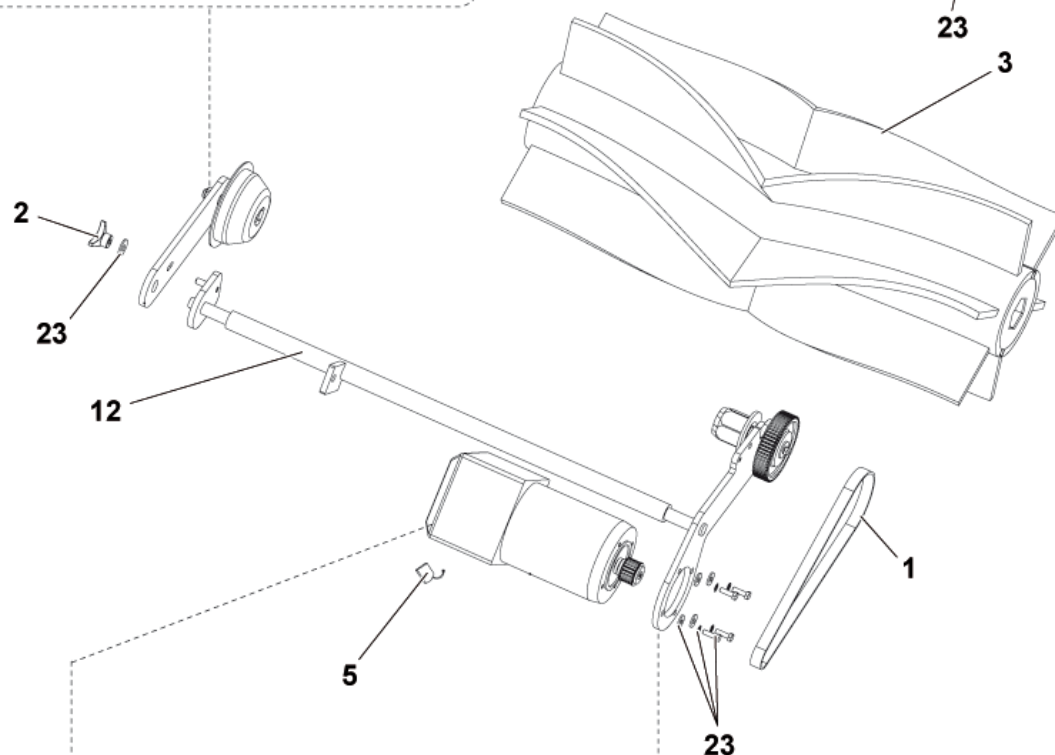
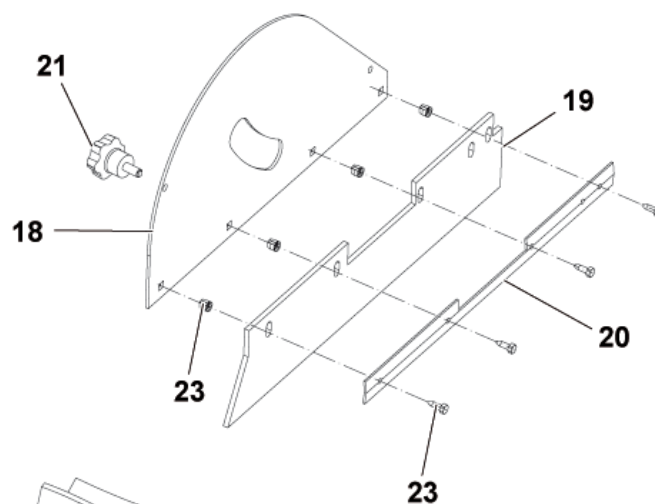
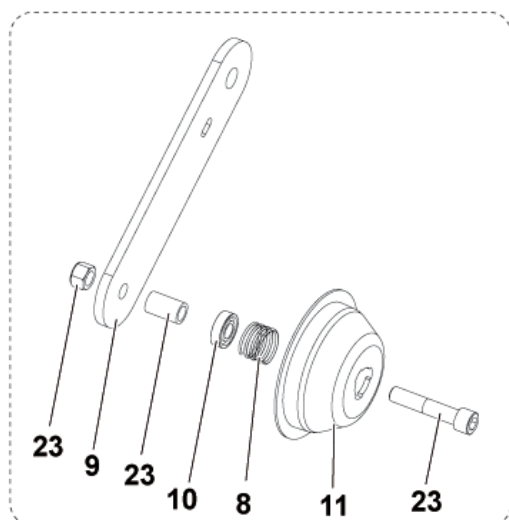
Pos.	Artikel-Nr.	Menge	Variante	Notes
1	1463946000	1	CHASSIS GREY	
2	146 2211 000	1	Abdeckklappe Grau	
3	146 0741 000	1	Dichtung für SchmutzbehälSR 1000 SP	
4	1463218000	1	CONVEYOR	
5	1463173000	4	GASKET CONVEYOR	
6	146 2427 000	2	Griffschraube M8x30	
7	1463977000	1	Abdichtung	
8	146 2798 000	1	Antirutsch-Kit	
9	1466374000	1	KNOB KNURLED M6 FEMALE PKD	
10	146 2384 000	1	Klammer	
11	1463146000	1	Saugmotor	
12	1463217000	1	CONVEYOR AIR INLET POLYSTYRENE	
13	1467690000	1	GRATE PROTECTION MET. RED SIP	
14	L08812362	2	Seilzug für BA 450/530	
15	9100000855	1	SPRING GAS 30 KG PKD	
16	145 9333 000	1	Haken Schmutzbehälter	
17	145 9184 000	2	Feder	
18	1464099000	1	Befestigungskit	
19	1463959000	1	CABLE MAIN BROOM	
20	146 2470 000	1	Knopf M 6	



Pos.	Artikel-Nr.	Menge	Variante	Notes
1	145 1782 000	1	Mikroschalter Sitz	
1	146 2900 000	1	SEAT WITH BELT	[1]
2	1466138000	1	CAP BLACK PPL DE 42X11.5 PKD	
3	146 2208 000	1	Sitzhalterung	
4	146 2421 000	2	GRATE SIDE	
5	146 2422 000	1	GRATE FRONT	
6	146 2424 000	2	PLATE CABLE FIXING GALV.	
7	1463995000	1	Aufkleber SR1101B	
8	146 2801 000	1	GASKET RUBBER FOR BONNET KIT	
9	146 2803 000	1	GASKET RUBBER L.500MM SIP	
10	146 2423 000	2	Anschlußstift	
11	146 2488 000	1	Kabelbaum	
12	146 0336 000	1	Mikroschalter	
13	1464290000	1	HARDWARE BONNET SYST KIT	

Part Notes:

[1] - OPTIONAL



MAIN BROOM ASSEMBLY

SR 1101 B

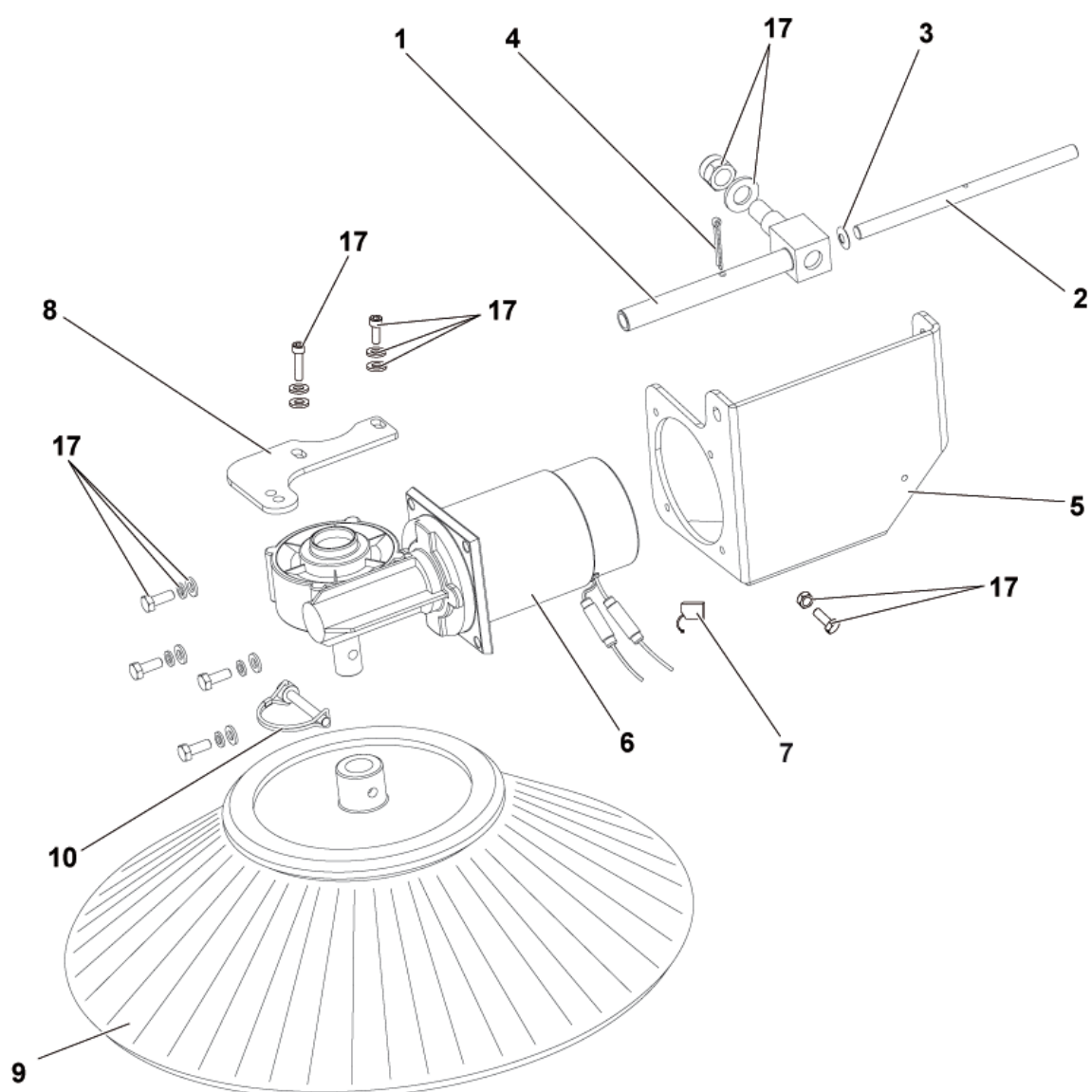
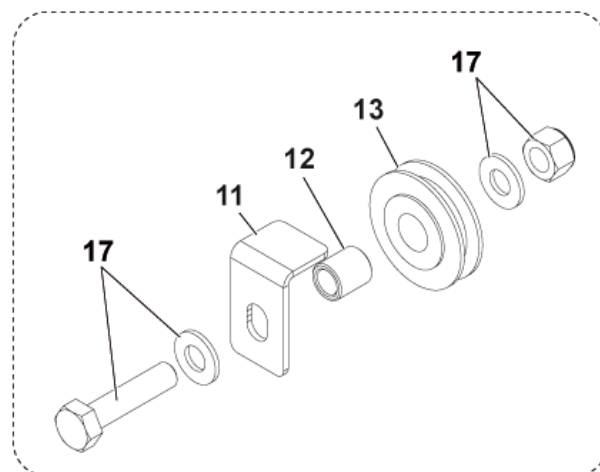
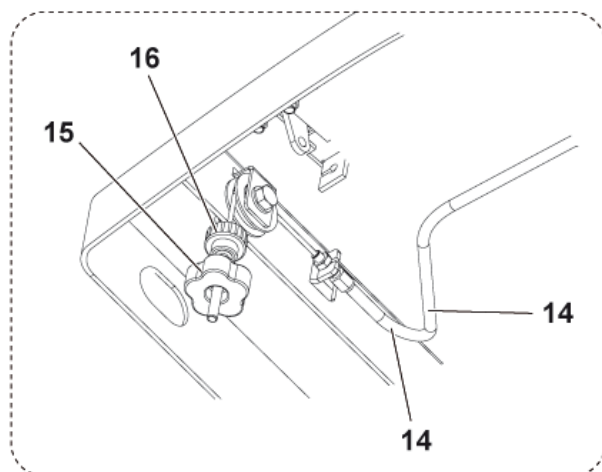
2017.11.02

2017.10.27

Pos.	Artikel-Nr.	Menge	Variante	Notes
0	1464101000	1	Teppichkehrset kpl.	[1]
1	145 1851 000	1	Zahnriemen HTD 710 5M 15	
2	145 5035 000	1	Griffmutter M 8	
3	145 4957 000	1	Kehrwalze 300x700 mm, Stahlmix	[2]
3	145 6080 000	1	Kehrwalze 300x700 mm, Naturborsten	[2]
3	145 4879 000	1	Kehrwalze 300x700 mm, PP 0,5-0,7	
4	146 2792 000	1	Motor	
5	1464432000	1	Kohle Kit 4 Stück	
6	1466147000	1	KEY 5X5X20 UNI6604A PKD	
7	145 1849 000	1	Riemenscheibe SR 5110	
8	1467024000	1	SPRING PKD	
9	1467720000	1	LEVER GALV. MAIN BROOM SIP	
10	44905699	1	BEARING BALL 6001 2RS PKD	
11	1467023000	1	HUB LEFT MAIN BROOM PKD	
12	146 2464 000	1	Schaft für Hauptbesen	
13	145 8197 000	1	Keil 4x4x20	
14	146 1489 000	1	Keil 4x4x15	
15	145 1850 000	1	Riemenscheibe	
16	1467637000	2	BEARING BALL 6002 2RS SIP	
17	1463877000	1	Steckzapfen Hauptbesen	
18	145 1827 000	1	Halter Hauptbesen SR 1100	
19	145 5927 000	1	Spritzgummi seitlich	
20	145 5929 000	1	Halter SR 1100 ECO	
21	1466153000	2	KNOB LOBED M6X15 PKD	
22	145 1791 000	1	Welle Kehrwalze SR 1100Eco	
23	1464291000	1	Befestigungskit f.	

Part Notes:

- [1] - NOT SHOWN - OPTIONAL - INST. INSTR. 1464103000
- [2] - OPTIONAL



RIGHT SIDE BROOM ASSY

SR 1101 B

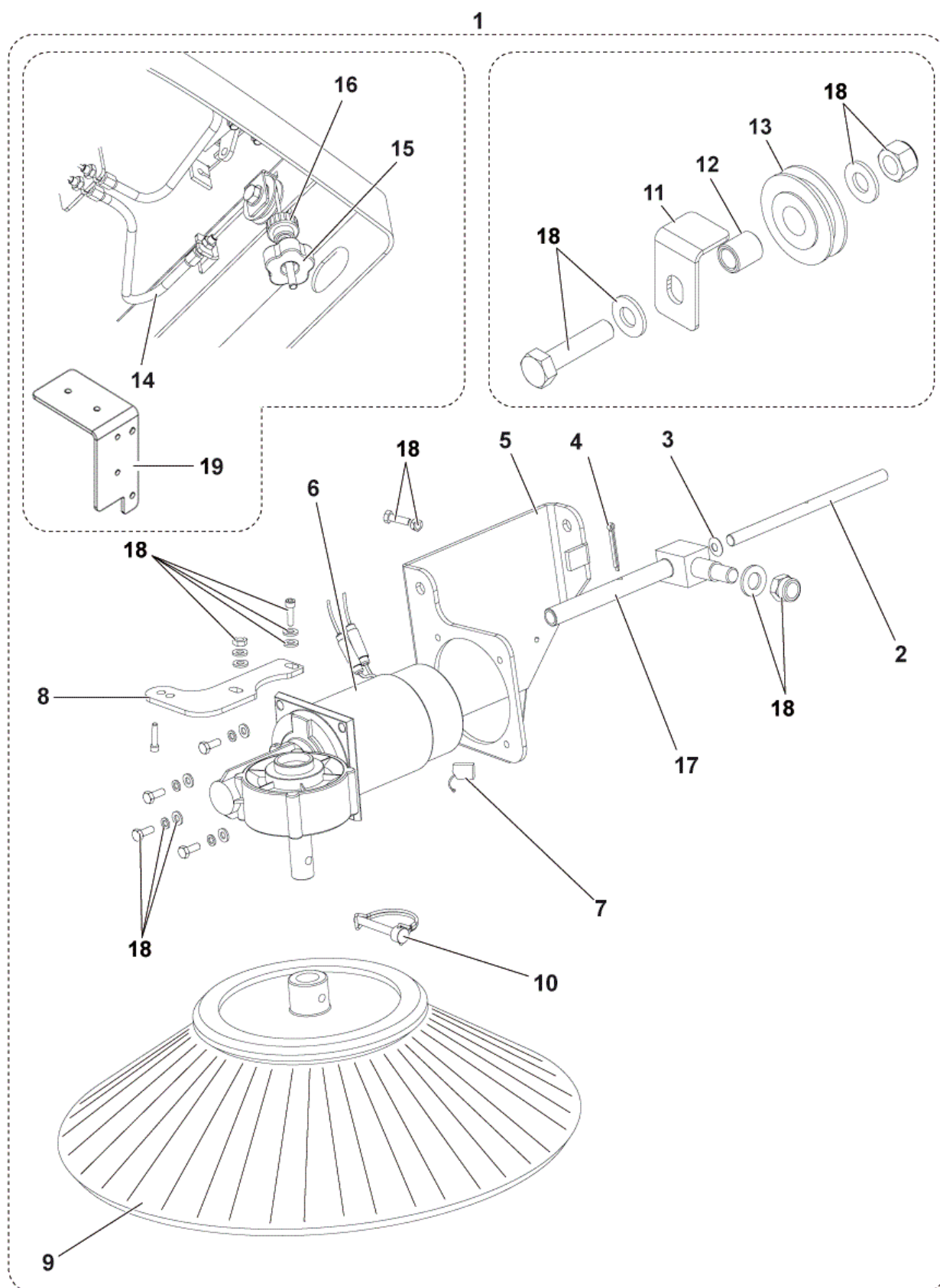
2017.11.02

2017.05.26

Pos.	Artikel-Nr.	Menge	Variante	Notes
1	145 1792 000	1	Bolzen	
2	145 1951 000	1	Bolzen	
3	145 2644 000	1	BELLEVILLE WASHER 6.2X15X0.5 DIN2093	
4	145 9624 000	1	Splint	
5	1463150000	1	Aufhängung Rechts	
6	1467688000	1	REDUCTION GEARMOTOR 60W 24V RT KIT	
7	1467083000	1	CARBON BRUSH 2 PCS SET	
8	1464355000	1	Halter f. Seitenbesen-	
9	1466140000	1	Seitenbesen 180x400 mm, Stahlmix	
9	1466141000	1	Seitenbesen 180x400 mm, Naturborsten	[1]
10	1463960000	1	CLIP WITH PIN	
11	1463957000	1	Winkel	
12	909 5312 000	1	Rolle 8.2x12x13.5	
13	145 2612 000	1	Riemenscheibe	
14	146 2475 000	1	KABEL RE 1374MM SB SR 1100 S	
15	146 2470 000	1	Knopf M 6	
16	1466374000	1	KNOB KNURLED M6 FEMALE PKD	
17	1464100000	1	Kehrbauset	

Part Notes:

[1] - OPTIONAL



LEFT SIDE BROOM ASSY

SR 1101 B

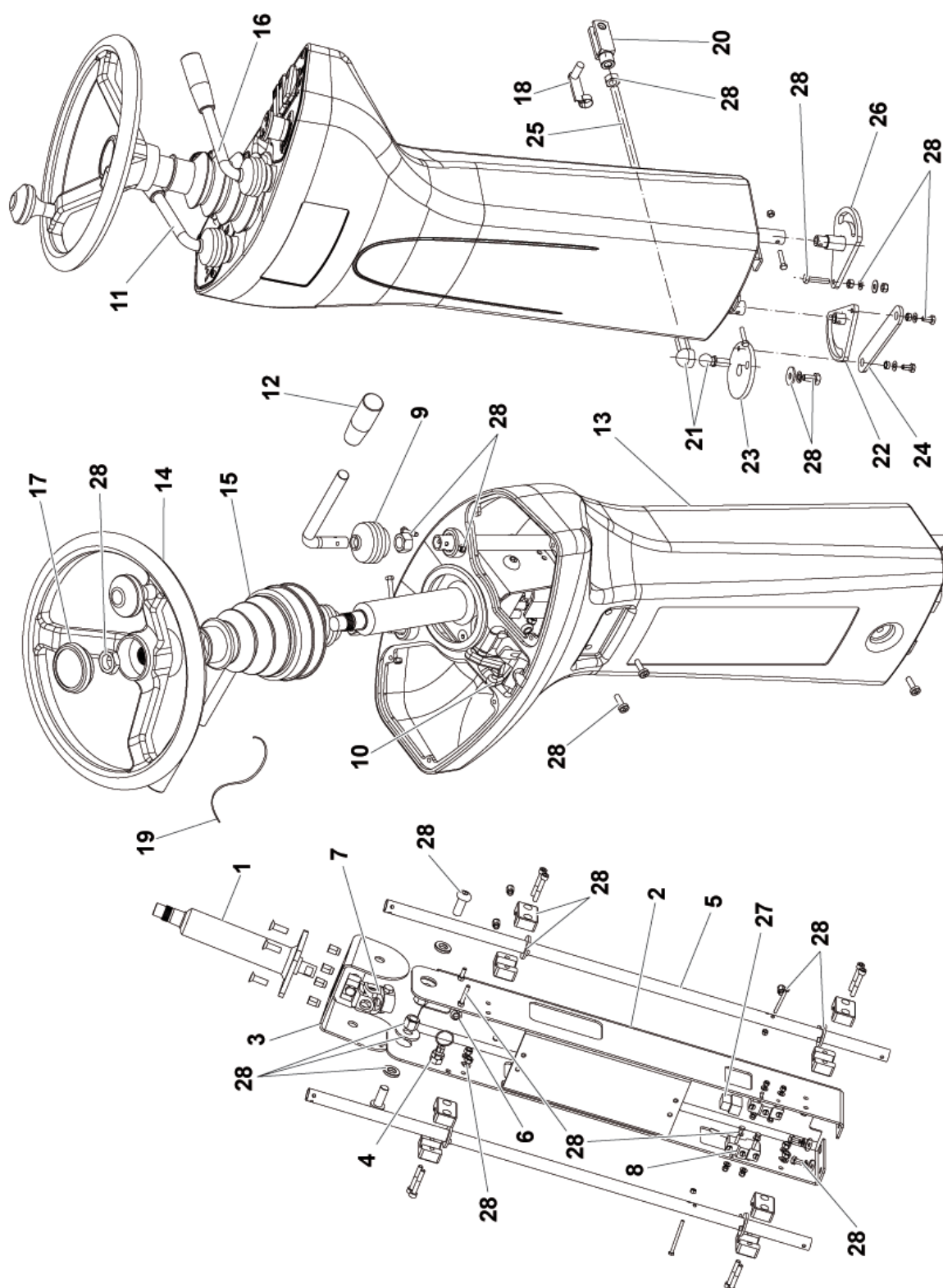
2017.11.02

2017.05.26

Pos.	Artikel-Nr.	Menge	Variante	Notes
1	1463970000	1	Linker Seitenbesen	[1]
2	145 1951 000	1	Bolzen	
3	145 2644 000	1	BELLEVILLE WASHER 6.2X15X0.5 DIN2093	
4	145 9624 000	1	Splint	
5	1463152000	1	Aufhängung Links	
6	1467689000	1	REDUCTION GEARMOTOR 60W 24VLT KIT	
7	1467083000	1	CARBON BRUSH 2 PCS SET	
8	1464355000	1	Halter f. Seitenbesen-	
9	1466140000	1	Seitenbesen 180x400 mm, Stahlmix	
9	1466141000	1	Seitenbesen 180x400 mm, Naturborsten	[2]
10	1463960000	1	CLIP WITH PIN	
11	1463957000	1	Winkel	
12	909 5312 000	1	Rolle 8.2x12x13.5	
13	145 2612 000	1	Riemenscheibe	
14	146 2520 000	1	KABEL LI 632MM SB SR 1100 S	
15	146 2470 000	1	Knopf M 6	
16	1466374000	1	KNOB KNURLED M6 FEMALE PKD	
17	145 1792 000	1	Bolzen	
18	1464100000	1	Kehrbauset	
19	1467509000	1	BRACKET F REINFORCEMENT PLATE KIT	[3]

Part Notes:

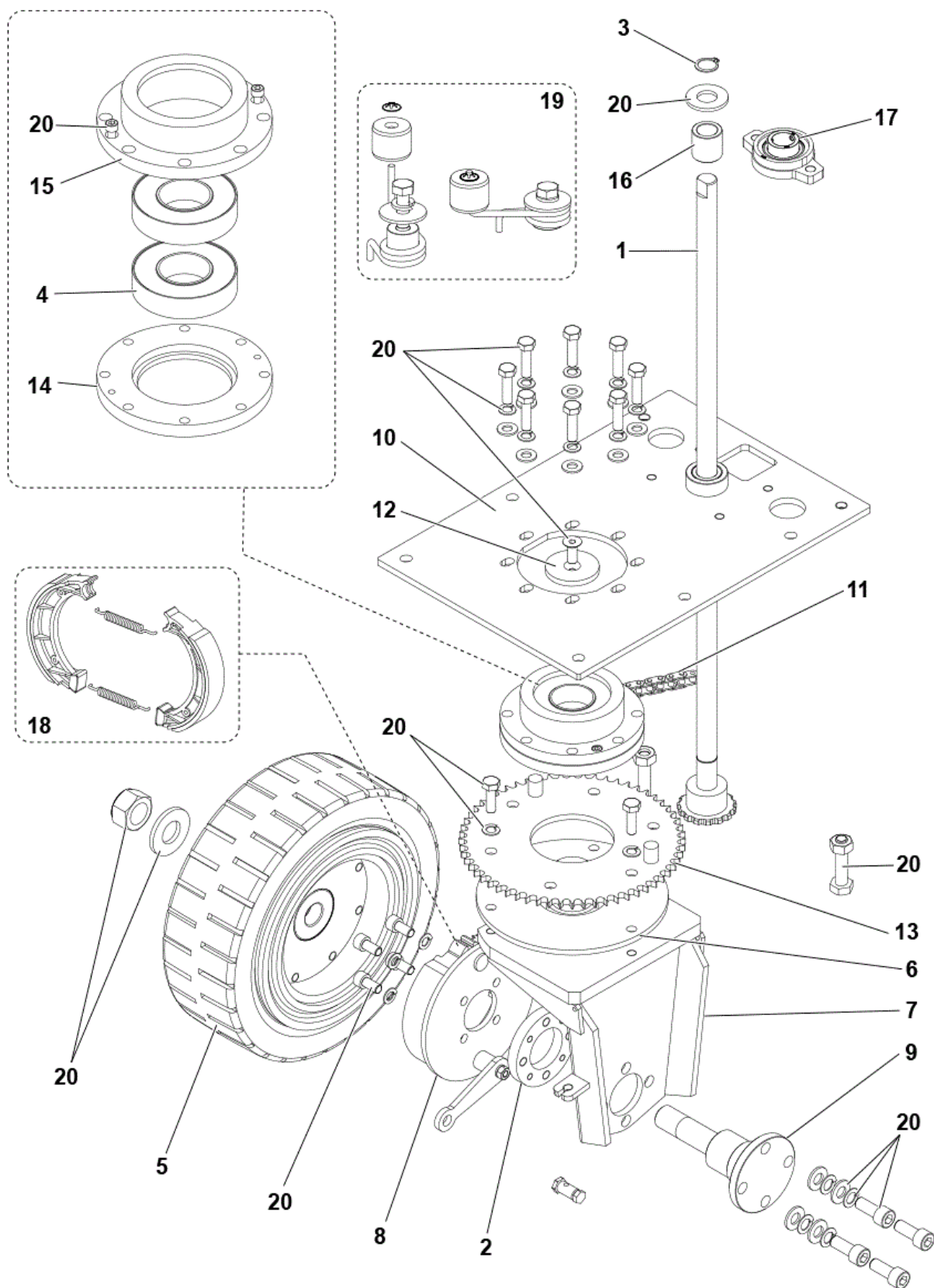
- [1] - OPTIONAL - INST. INTR. 1463971000
- [2] - OPTIONAL
- [3] - Before machine SN 3810154500010
SeeInst. Instr.1467510000



Pos.	Artikel-Nr.	Menge	Variante	Notes
1	1466525000	1	COLUMN STEERING SIP	
2	1465515000	1	COLUMN STEERING KIT	[1]
2	1467671000	1	COLUMN STEERING KIT	[2]
3	1465516000	1	SUPPORT STEERING COLUMN KIT	
4	1466330000	1	PLUNGER M10 W/CABLE KIT	[3]
5	146 2452 000	2	Halterung	
6	146 2450 000	2	Zugstange	
7	1466319000	1	JOINT UNIVERSAL D.17 PKD	
8	1466506000	2	MICROSWITCH 10A 250V PKD	
9	146 2456 000	2	Gummibalg	
10	146 2458 000	1	Hebel	
11	1463804000	1	Hebel, rechts	
12	146 2453 000	2	Griff	
13	146 2212 000	1	Haube, vorn	
14	146 2106 000	1	Lenkrad D. 320	
15	146 2457 000	1	BELLOW RUBBER	
16	1463803000	1	Hebel, links	
17	1467031000	1	CAP PKD	
18	145 4540 000	1	Federring	
20	145 9666 000	1	Gabelstück M10	
21	145 9769 000	2	BALL JOINT M10	
22	1466531000	1	LEVER MAIN BROOM SIP	
23	1467696000	1	PLATE GALV. MAIN BROOM SIP	
24	146 2467 000	1	LEVER MAIN BROOM	
25	146 2468 000	1	Gewindestange M10 x 410	
26	1466532000	1	LEVER SIDE BROOM SIP	
27	146 1646 000	1	RELAY 24V	
28	1464292000	1	Schrauben Kit	

Part Notes:

- [1] - VALID ONLY FOR MACHINES UNTIL S/N 3810172100044
- [2] - VALID ONLY FOR MACHINES FROM S/N 3810172100045
- [3] - INCLUDED POS. 19

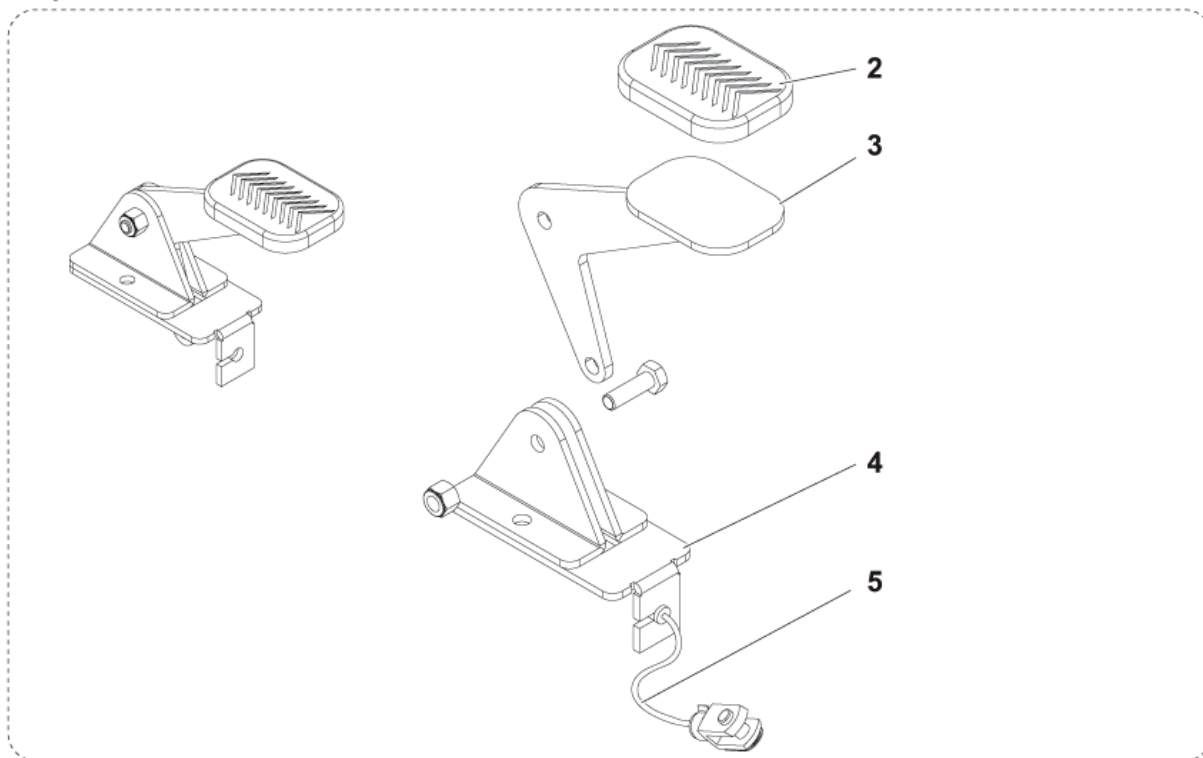


Pos.	Artikel-Nr.	Menge	Variante	Notes
1	146 0960 000	1	Schaft	[1]
1	1467668000	1	SHAFT STEERING W/PINION PHOS.	[2]
2	145 1747 000	1	Frontbremse	
3	9100001345	1	RING D 17 UNI7435 10 PCS SET	[1]
4	145 2357 000	2	Kugellager 6207-2RS	
5	146 2442 000	1	Vorderrad superelastisch	
5	146 2745 000	1	Vorderrad, n. mark.	[3]
6	146 2438 000	1	SHIM STEERING WHEEL SPROCKET GALV.	
7	146 2437 000	1	Stützrad vorne	
8	146 2441 000	1	Bremsklotz	
9	146 2440 000	1	Bolzen f. Vorderrad	
10	146 2439 000	1	PLATE SUPPORTING	[4]
10	1467670000	1	PLATE SUPPORT STEERING GALV.	[2]
11	146 2443 000	1	Kette 3/8 - 73	
12	145 2585 000	1	WASHER METAL F STEERING SUPPORT FIXING	
13	145 2714 000	1	Kranz	
14	145 2587 000	1	FLANGE	
15	145 2586 000	1	FLANGE	
16	145 9505 000	1	Buchse	[1]
17	1467674000	1	BEARING SELF ALIGNING W/HOUSING KIT	[2]
18	1464592000	1	SHOES BRAKE KIT	
19	1465612000	1	WHEEL CHAIN TENSIONER KIT	[5]
20	1464293000	1	HARDWARE FRONT WHEEL KIT	

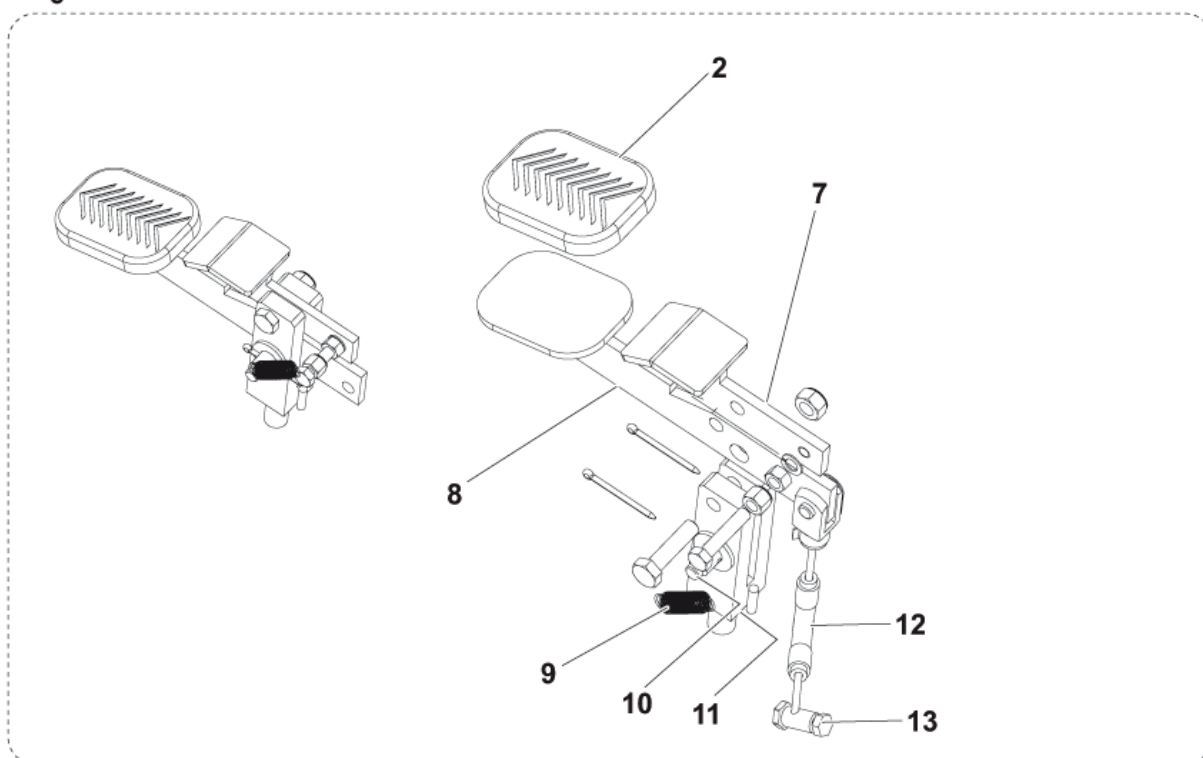
Part Notes:

- [1] - VALID ONLY FOR MACHINES UNTIL S/N 3810172100044
 - [2] - VALID ONLY FOR MACHINES FROM S/N 3810172100045
 - [3] - OPTIONAL
 - [4] - STOCK COVERS GUARANTEE
- TSB-FC-2016-017 hard steering SR1101
- DE TSB-FC-2016-017 SR1101 Floortec R670 schwergängige Lenkung
VALID ONLY FOR MACHINES UNTIL S/N 3810172100044
- [5] - STARTING FROM S/N 3810134500053

1



6



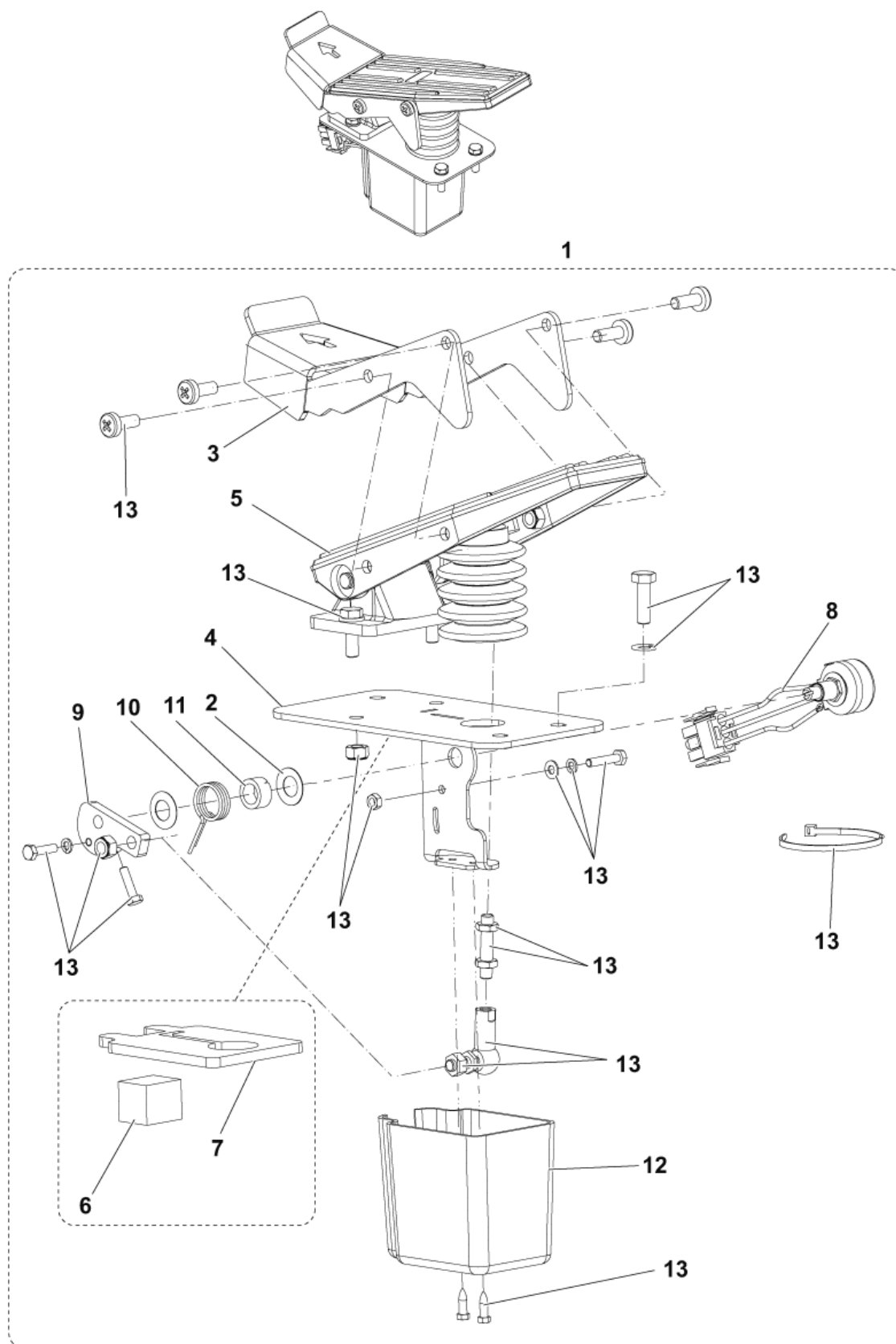
PEDAL ASSEMBLIES 1

SR 1101 B

2017.11.02

2017.10.27

Pos.	Artikel-Nr.	Menge	Variante	Notes
1	146 2852 000	1	Pedal-Kit	
2	145 8478 000	2	Pedalgummi	
3	145 1841 000	1	PEDAL SKIRT RAIS.DEVICE	
4	145 1839 000	1	Flap-Halterung	
5	146 2477 000	1	Seilzug	
6	146 2853 000	1	PEDAL BRAKE KIT	
7	145 3490 000	1	PEDAL PARKING BRAKE GALV.	
8	145 3472 000	1	PEDAL	
9	145 9290 000	1	Feder für Flap Sw 900	
10	145 2541 000	1	Bolzen	
11	145 2540 000	1	Pedalhalter f. SR1000/5	
12	146 2463 000	1	Bremsseil	
13	146 2444 000	1	Kabelklammer	



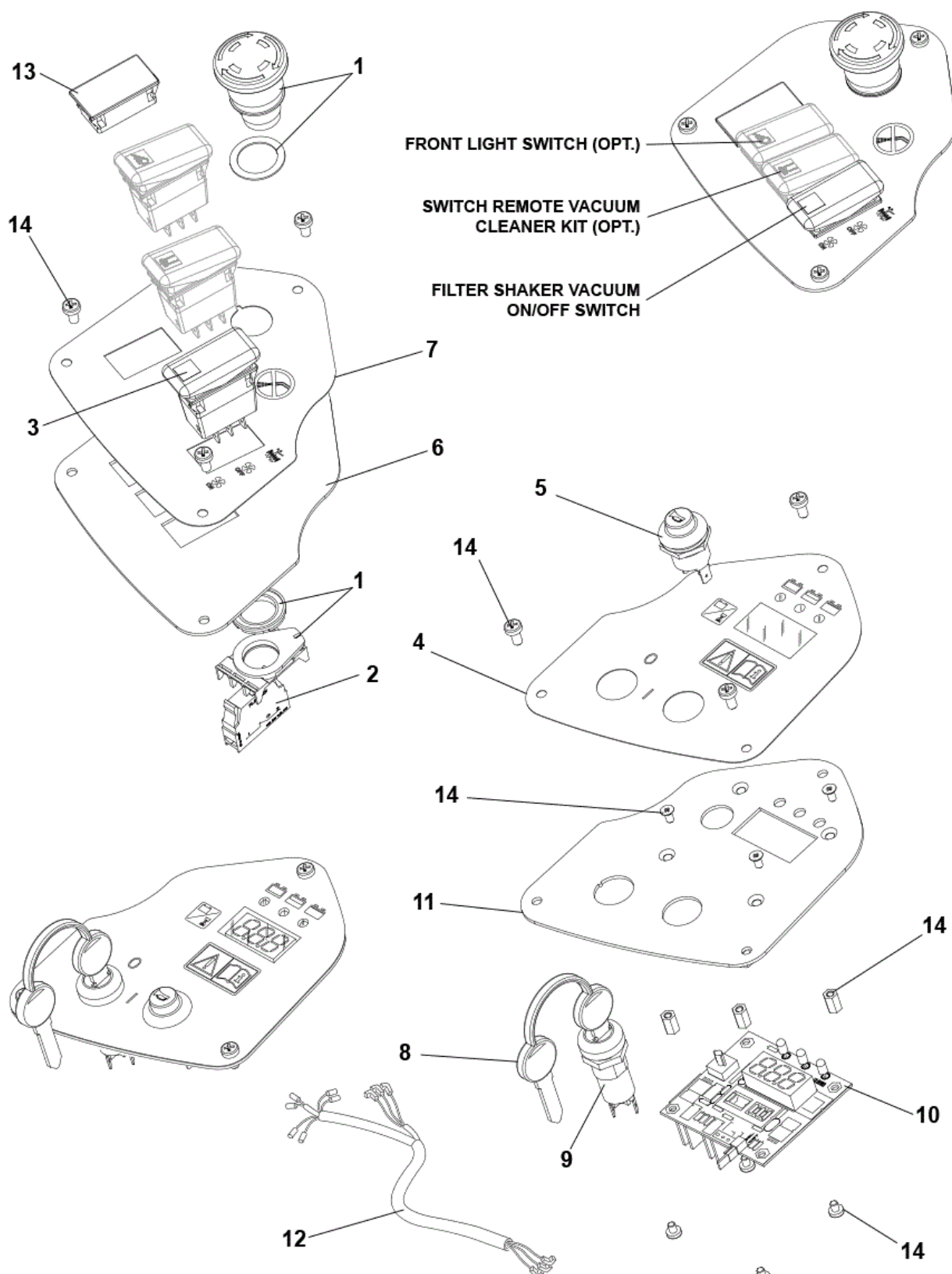
PEDAL ASSEMBLIES 2

SR 1101 B

2017.11.02

2017.12.20

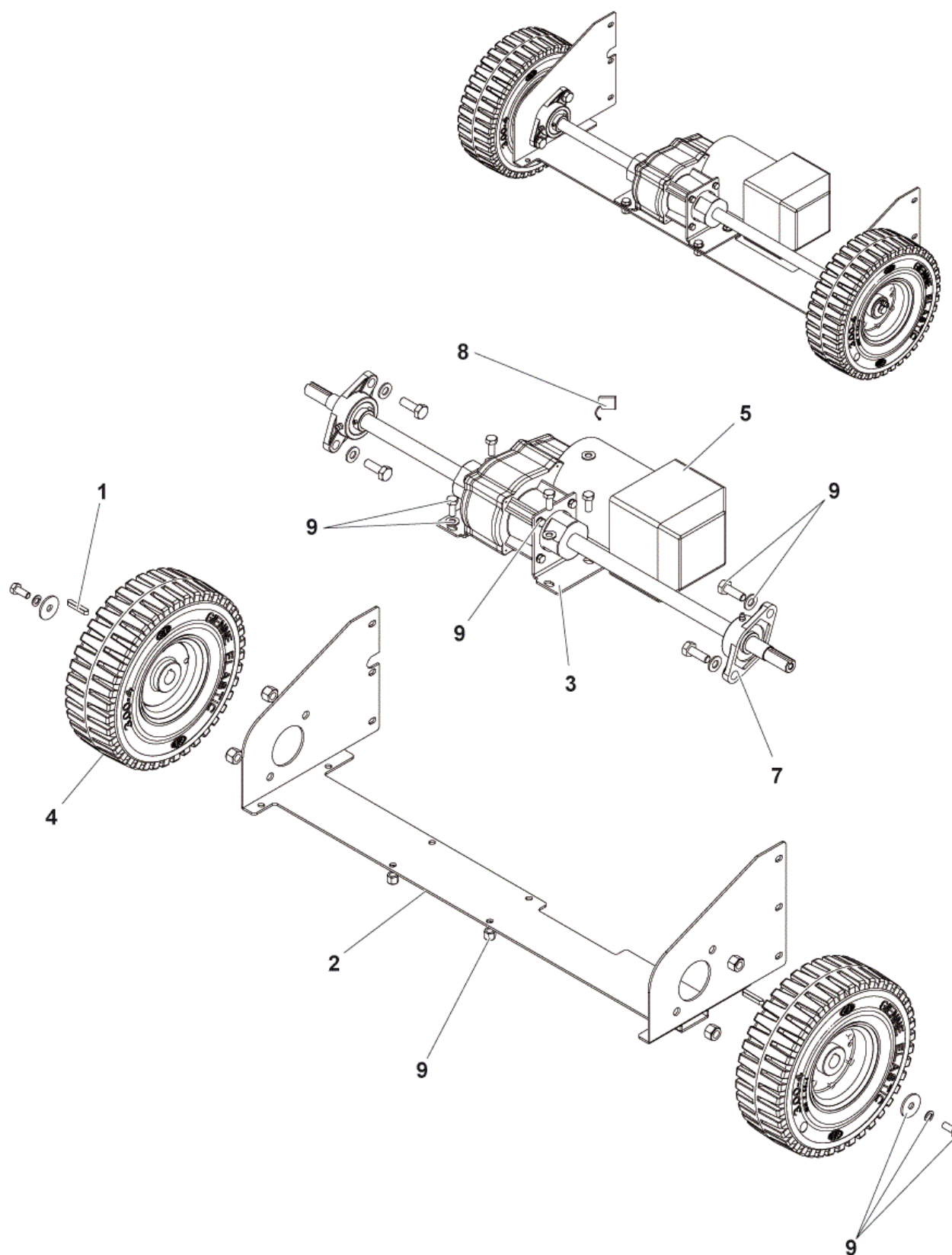
Pos.	Artikel-Nr.	Menge	Variante	Notes
1	146 2952 000	1	Fahrpedal kompl. BR 601	
2	145 1147 000	2	U-Scheibe	
3	146 2929 000	1	BRACKET PEDAL MET.BLACK	
4	146 2930 000	1	SUPPORT.SPEED CONTR.PEDAL	
5	1467758000	1	PEDAL SPEED CONTROL SIP	
6	146 2062 000	1	GASKET ADHESIVE 20X20 L. 24MM	
7	146 2315 000	1	GASKET. PEDAL	
8	146 2480 000	1	Potentiometer Fahrtrieb	
9	146 2882 000	1	Hebel	
10	1467038000	1	PEDAL SPRING PKD	
11	146 2884 000	1	Hülse 10,3 x 15 x 7,5	
12	145 4086 000	1	Pedalabdeckung f. SR 1300	
13	909 6834 000	1	Fahrschalter kpl.	



Pos.	Artikel-Nr.	Menge	Variante	Notes
1	1466683000	1	Sicherheitsschalter	
2	146 1728 000	1	Kontakt	
3	146 2532 000	1	SWITCH	
4	1463989000	1	Aufkleber für	
5	145 9678 000	1	Druckschalter Hupe	
6	146 2460 000	1	Bedienfeld links	
7	1463991000	1	DECAL CONTROL PANEL LT	
8	146 2887 000	1	Schlüssel (2 Stück)	
9	9100001354	1	SWITCH KEY WITH CAP PKD	
10	1466161000	1	CONTROLLER MAIN MACHINE KIT	[1]
11	146 2459 000	1	Bedienfeld, rechts	
12	146 2489 000	1	HARNESS CONTROL PANEL	
13	909 5836 000	1	Druckkappe	
14	1464294000	1	Befestigungskit	

Part Notes:

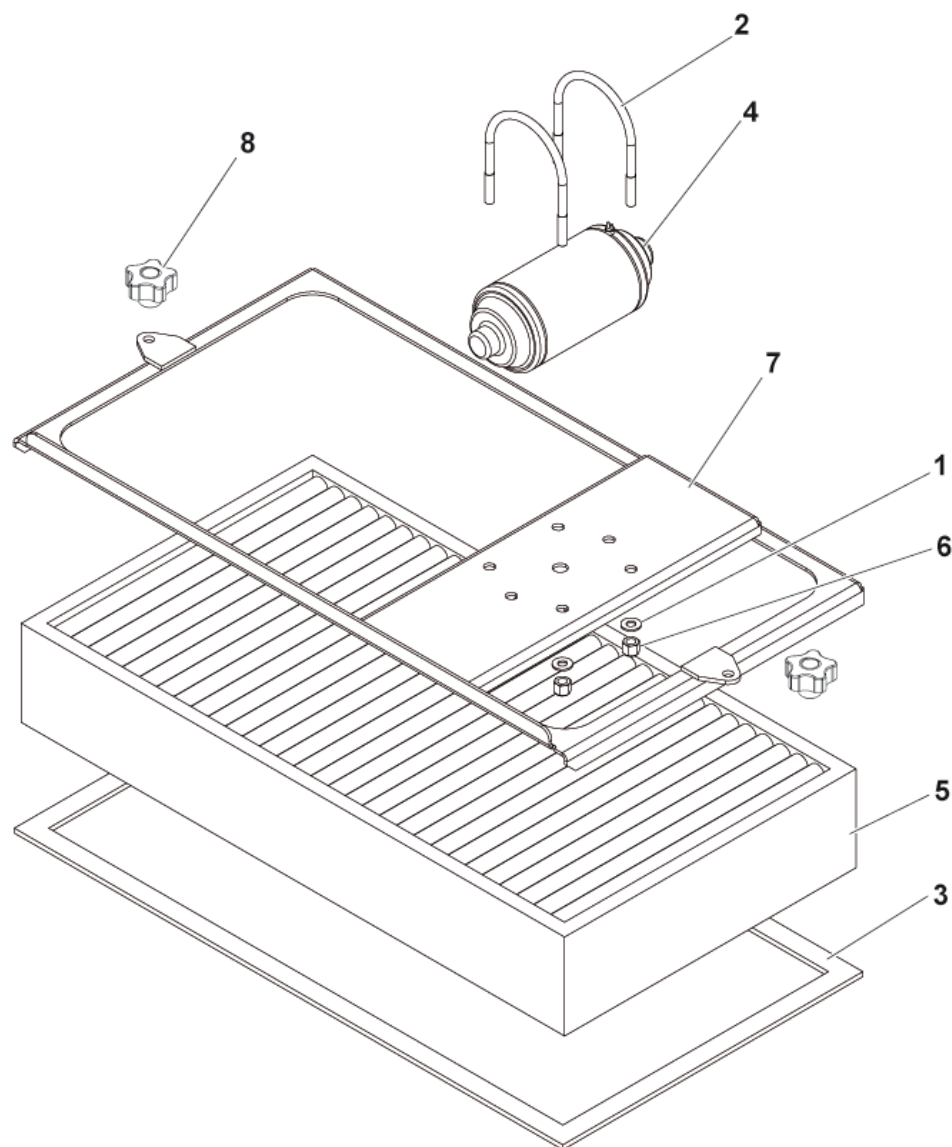
[1] - INSTALLATION INSTRUCTIONS 1465914000



Pos.	Artikel-Nr.	Menge	Variante	Notes
1	145 9776 000	2	Keil 6x6x35V 17-044	
2	1463951000	1	BRIDGE REAR WHEELS MET.GREY	
3	146 2435 000	2	Winkel	
4	146 2746 000	2	Hinterrad, n. mark.	[1]
4	1467558000	2	WHEEL CPL 3.00/4 SOLID RUBBER KIT	
5	1463228000	1	Motor Fährantrieb kpl.	
7	1467697000	2	BEARING SELF ALIG. UCFL204 W/HOUSING SIP	
8	L08603949	1	Kohlenbürsten Kit 4pcs	
9	1464295000	1	Befestigungskit für	

Part Notes:

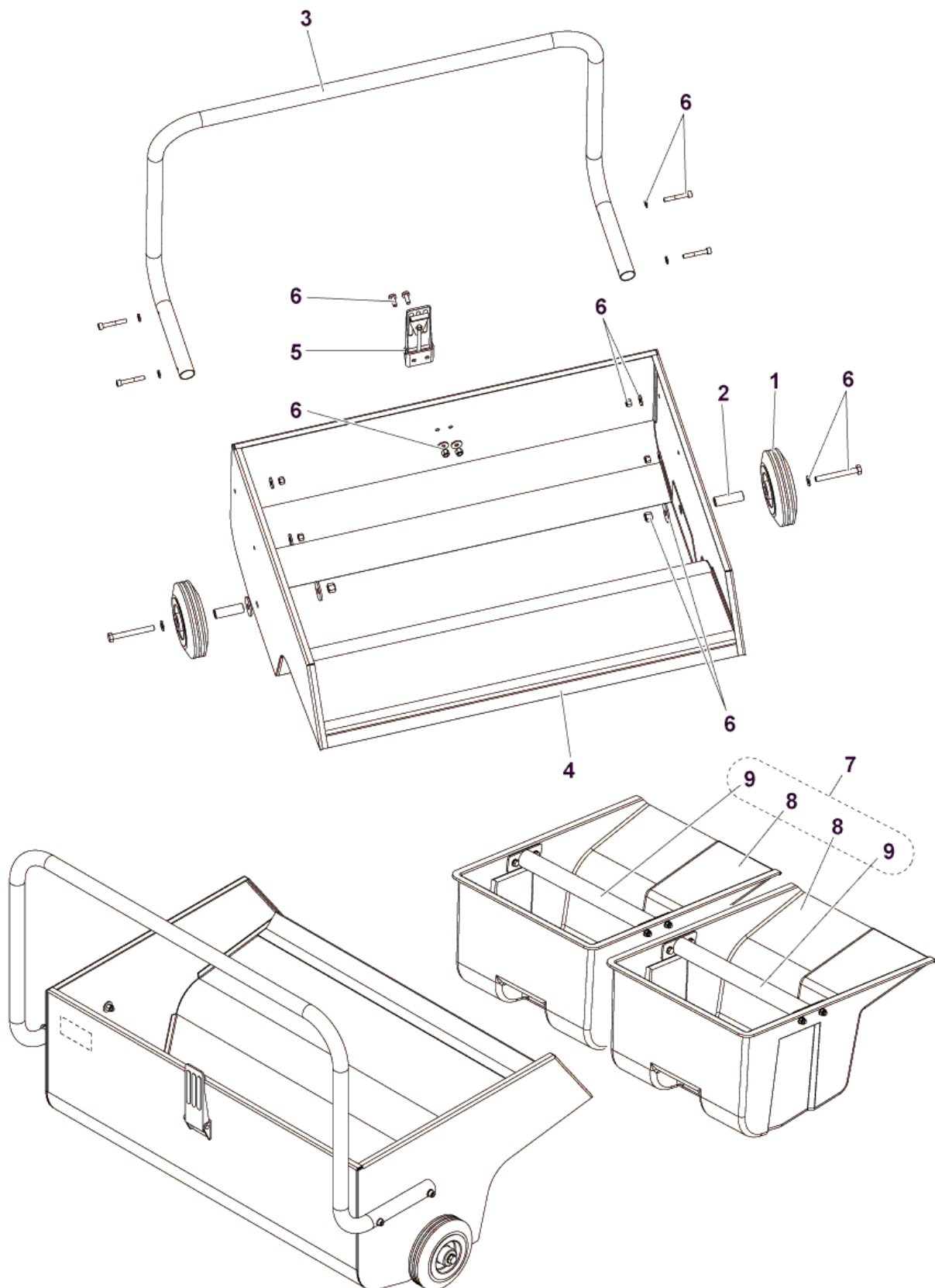
[1] - OPTIONAL



Pos.	Artikel-Nr.	Menge	Variante	Notes
0	146 2731 000	1	Vorfilter	[1]
1	33023208	1	WASHER M8 UNI6592 10 PCS SET	
2	1465997000	2	COLLAR METAL U M8 SIP	
3	146 2729 000	1	Dichtung Kit	
4	146 2795 000	1	Rüttelmotor f. SR 1100 S	
5	145 6013 000	1	Staubfilter, Polyester, waschbar	[2]
5	146 2759 000	1	Filter Polyester	[2]
5	1463523000	1	Filter Papier Panel	
6	33023207	1	NUT SELF L. M8 UNI7473 10 PCS SET	
7	146 2428 000	1	Rahmen Filterrüttlermotor	
8	9100002017	2	KNOB M8 SIP	

Part Notes:

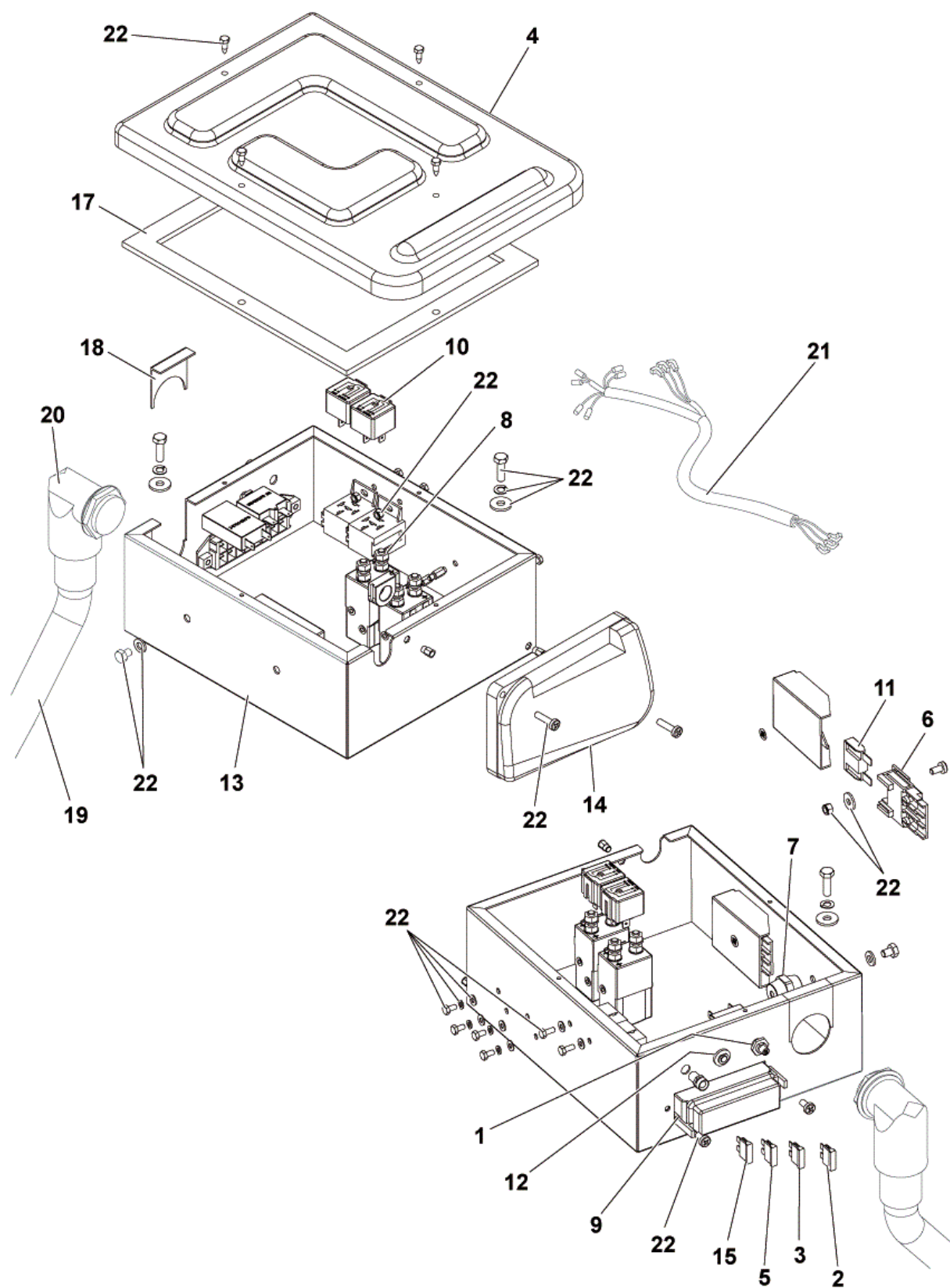
- [1] - NOT SHOWN - OPTIONAL
- [2] - OPTIONAL



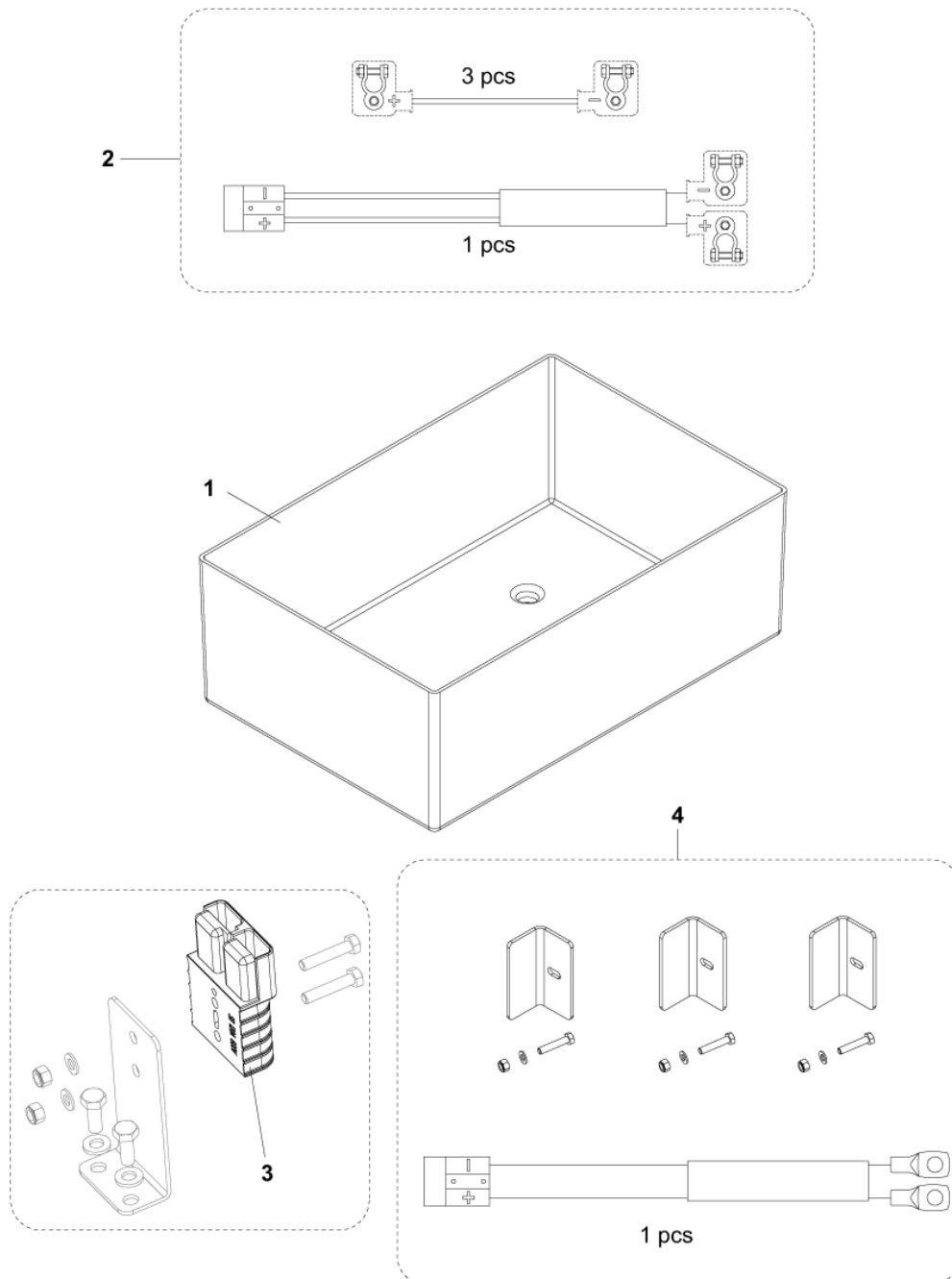
Pos.	Artikel-Nr.	Menge	Variante	Notes
1	145 5116 000	2	Rad f. Schmutzbehälter	
2	145 5118 000	2	Hülse	
3	1463958000	1	HANDLE DIRT CONTAINER	
4	1463948000	1	CONTAINER DIRT	
5	145 9330 000	1	Verschluss Schmutzbehälter	
6	1464296000	1	Befestigungskit f.	
7	1463981000	1	Minicontainer-Set	[1]
8	1463973000	2	CONTAINER DIRT MINI PLASTIC	
9	1464212000	2	HANDLE MINI CONTAINER	

Part Notes:

[1] - OPTIONAL



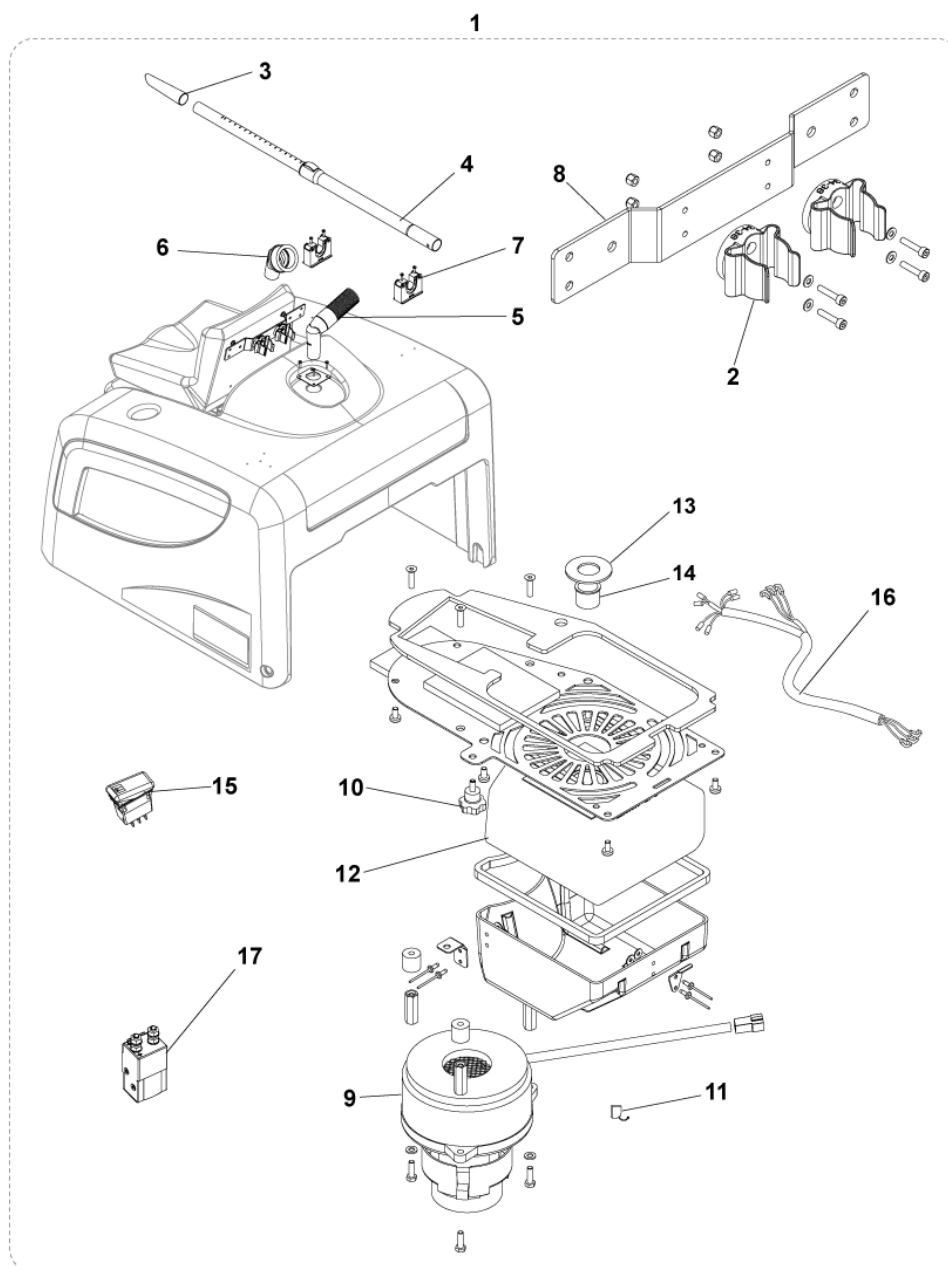
Pos.	Artikel-Nr.	Menge	Variante	Notes
1	L08812633	1	Sicherungsautomat 10 Azu SR 100 SB	
2	145 8513 000	1	FUSE BLADE 30A UL	
3	145 0227 000	1	Sicherung 40A nicht mehr bestellen	
4	146 2484 000	1	Deckel Elektronikkasten	
5	145 8514 000	2	Sicherung 25A	
6	146 0659 000	1	Sicherungshalter gross	
7	146 0708 000	1	Isolator weiß M6	
8	146 0719 000	1	Schütz 24V	
9	146 1170 000	1	Sicherungsschalter SR1301	
10	145 3712 000	2	Relais 24 V	
11	146 2486 000	1	Sicherung 70 A	
12	909 5706 000	1	Hauptschalter 30 A	
13	1463962000	1	BOX ELECTRIC COMPONENTS MET.GREY	
14	1466173000	1	CONTROLLER DRIVE WHEEL PKD	
15	145 9853 000	2	Sicherung 15A	
17	146 2802 000	1	Dichtung f.	
18	1463961000	1	Halter	
19	1464164000	1	HARNESS MACHINE BATTERY	
20	1463157000	1	GROMMET D.15X22	
21	1464165000	1	HARNESS ELECTRONIC BOX BATTERY	
22	1464297000	1	Befestigungsset	



Pos.	Artikel-Nr.	Menge	Variante	Notes
1	145 4692 000	1	Batteriebehälter	
2	1467532000	1	HARNESS BATTERY KIT	
3	146 1986 000	1	Ladestecker SB 120 rot	
4	146 2791 000	1	Batterie-Gehäuse-Set	[1]

Part Notes:

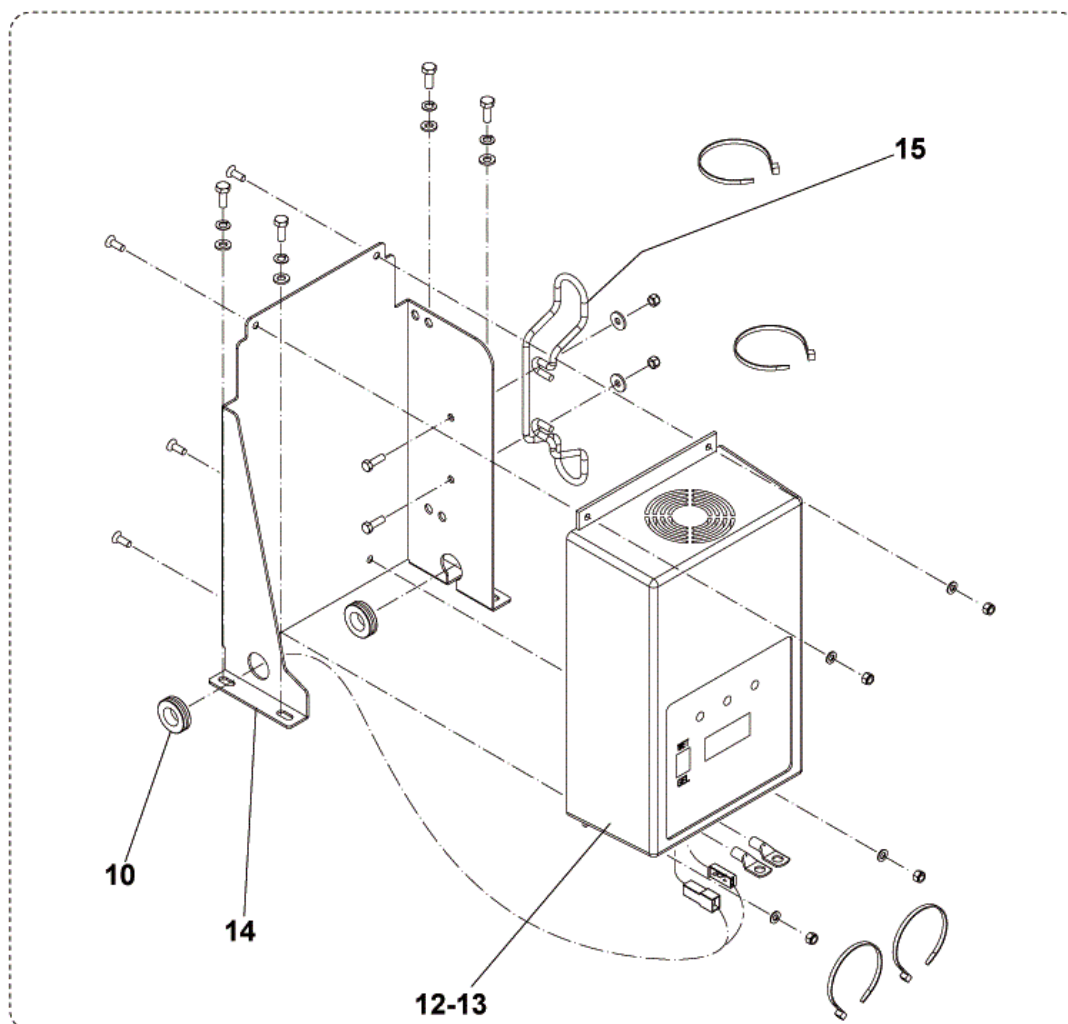
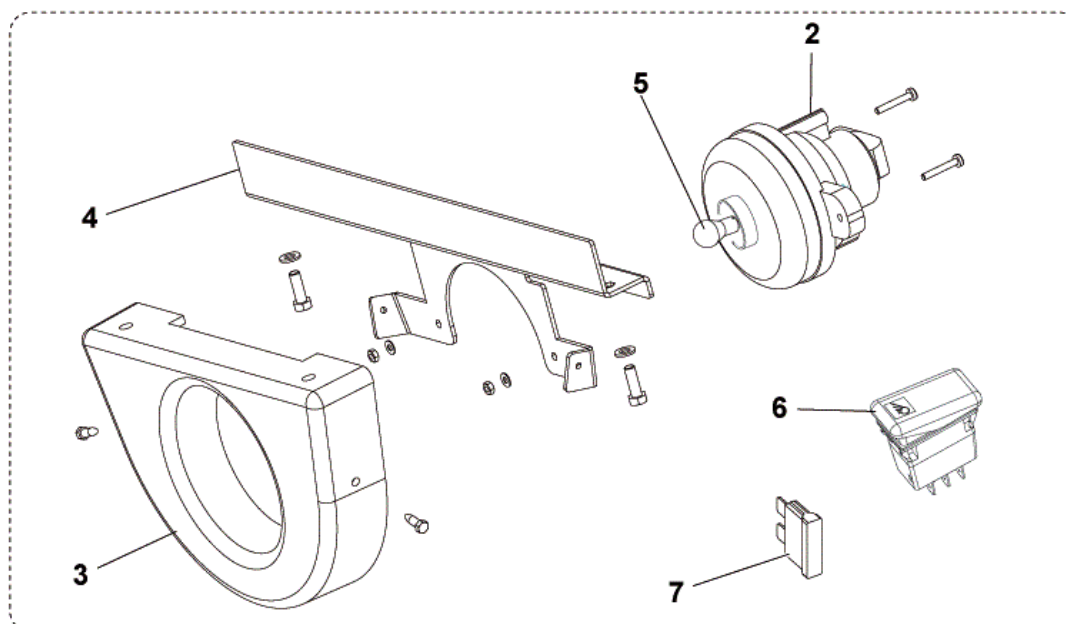
[1] - OPTIONAL



Pos.	Artikel-Nr.	Menge	Variante	Notes
1	146 2524 000	1	Handsaugset	[1]
2	146 2288 000	2	Schlauchklammer	
3	81140900	1	Schrägrohrdüse, Kunststoff grau Ø 32 mm	
4	011 8130 500	1	Teleskoprohr Alu Ø 32 mm	
5	140 5691 000	1	Saugschlauch kpl. Ø 32mm mit Rohrbogen	
6	140 8244 500	1	Pinselfüse Ø 32 mm	
7	146 2289 000	2	Schlauchklammer	
8	146 2291 000	1	BRACKET. TOOL MOUNTING	
9	146 2133 000	1	Saugmotor SR 1100 S	[2]
10	1466153000	2	KNOB LOBED M6X15 PKD	
11	909 5074 000	1	Kohlebürsten-Kit (2Stck.)	
12	78602600	1	Staubbeutel GM 60 / Coupe5 Stk. inkl. Vo	
13	146 2898 000	1	GASKET VAC HOSE	
14	L08812351	1	Büchse zu CA/BA 530	
15	146 1973 000	1	Schalter	
16	146 2522 000	1	HARNESS VACUUM CLEANER	
17	146 0719 000	1	Schütz 24V	
18	146 1980 000	1	GASKET VACUUM PLATE	
19	146 2118 000	1	GASKET RUBBER L.750MM PKD	[3]

Part Notes:

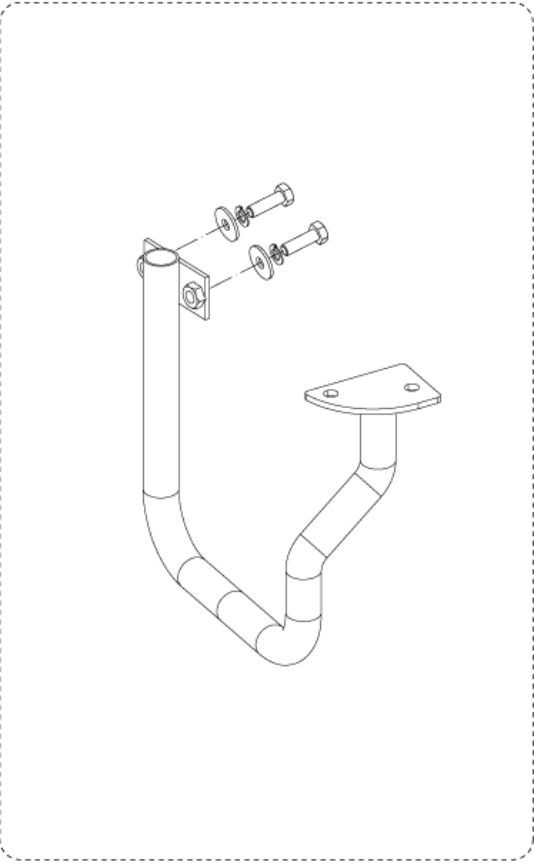
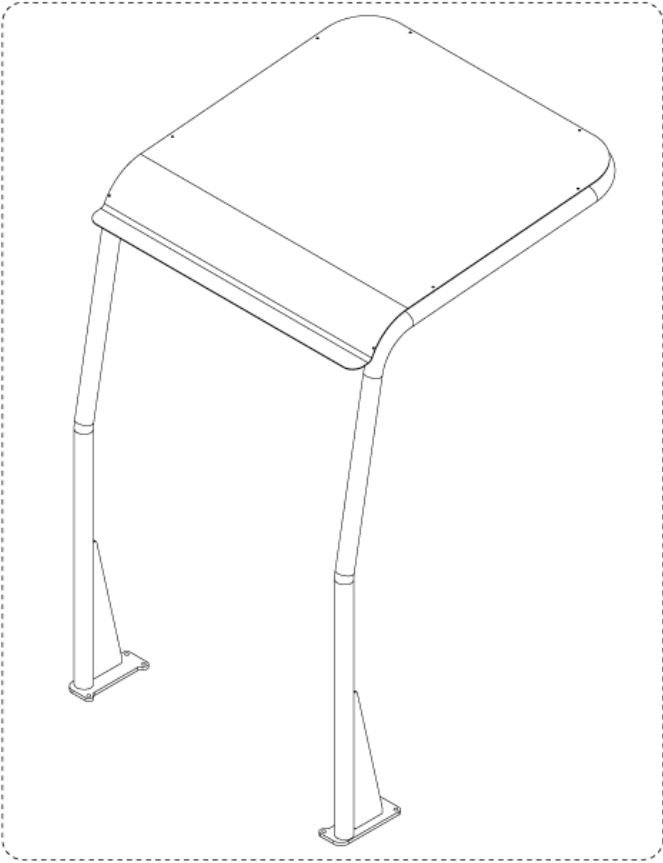
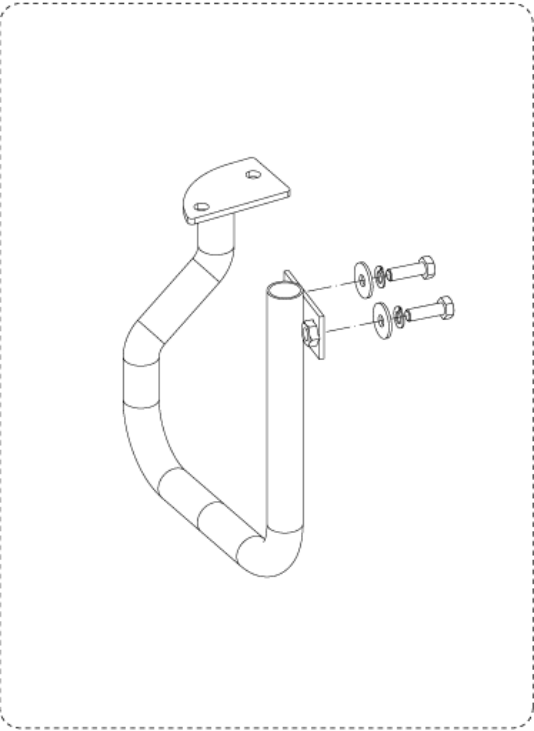
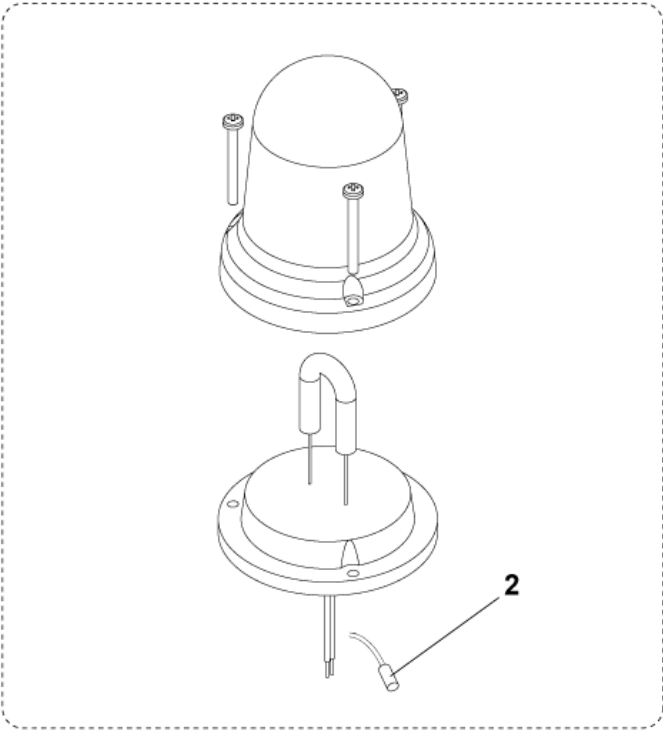
- [1] - OPTIONAL - INST. INSTR. 146 2523 000
 [2] - GUARANTEE DATE EXPIRED
 [3] - NOT SHOWN



Pos.	Artikel-Nr.	Menge	Variante	Notes
00	146 2132 000	1	CHARGER BATT. ON BOARD 24V 25A 115V CPL	
1	1463972000	1	Arbeitslicht-Set	[1]
2	146 1985 000	1	Licht	
3	146 2528 000	1	Scheinwerferblende	
4	1464038000	1	PLATE LIGHT SUPPORT	
5	145 5518 000	1	Lampe 24V/21W	
6	146 1974 000	1	Schalter	
7	1467034000	1	FUSE BLADE 10A PKD	
8	146 2052 000	1	Einbauladegerät 24V-25A 230V	[2]
9	146 2337 000	1	CHARGER BATT. ON BOARD 24V 25A 100V KIT	[3]
10	145 1237 000	2	Kabelschutz D.22	
12	146 2131 000	1	Batterie Ladegerät 230 V	
13	146 2817 000	1	CHARGER BATT. ON BOARD 24V 25A 100V CPL	[4]
14	146 2311 000	1	BRACKET	
15	1466317000	1	SUPPORT CABLE KIT	
16	145 1726 000	1	FUSE 10A	[5]
17	146 2139 000	1	CARD ELECTRONIC BATTERY CHARGER	[5]
18	1466172000	1	CONTROLLER DISPLAY SIP	[6]
19	146 2144 000	1	Kabel	[7]
20	146 2142 000	1	Lüfter für Kühlung	[7]
21	146 0801 000	1	SWITCH WET/GEL	[7]

Part Notes:

- [1] - OPTIONAL - INST. INTR. 1463974000
- [2] - OPTIONAL - INST. INTR. 146 2055 000
- [3] - COMPLEXITY REDUCTION
- OPTIONAL - INST. INTR. 146 2055 000
- [4] - for Japan
COMPLEXITY REDUCTION
- [5] - NOT SHOWN
- [6] - ALTERNATIVE USE 146 2132 000
NOT SHOWN
- [7] - ALTERNATIVE USE 146 2132 000 COMPL.
NOT SHOWN



KIT FLASHING BEACON - BROOM BUMPER - OVERHEAD GUARD

SR 1101 B

2017.12.20

Pos.	Artikel-Nr.	Menge	Variante	Notes
1	146 2692 000	1	Warnleuchte	[1]
2	145 3738 000	1	PLUG CYL. 0.25/1	
3	1464058000	1	Anfahrschutz-Set, rechts	[2]
4	1464105000	1	Anfahrschutz-Set, links	[2]
5	146 2735 000	1	Fahrerschutzdach	[3]

Part Notes:

- [1] - OPTIONAL - INST. INSTR. 146 2693 000
- [2] - OPTIONAL - INST. INSTR. 1464060000
- [3] - OPTIONAL - INST. INSTR. 146 2738 000

RECOMMENDED SPARE PARTS

SR 1101 B

2017.11.02

2017.05.26

Pos.	Artikel-Nr.	Menge	Variante	Notes
1	1466140000	2	Seitenbesen 180x400 mm, Stahlmix	
2	145 4879 000	1	Kehrwalze 300x700 mm, PP 0,5-0,7	
3	1464062000	1	Frontschürze	
4	145 5927 000	2	Spritzgummi seitlich	
5	145 1971 000	1	Spritz Gummi, hinten	
6	1463523000	1	Filter Papier Panel	
7	145 1851 000	1	Zahnriemen HTD 710 5M 15	
8	146 2477 000	1	Seilzug	
9	146 2520 000	1	KABEL LI 632MM SB SR 1100 S	
10	146 2475 000	1	KABEL RE 1374MM SB SR 1100 S	
11	1463959000	1	CABLE MAIN BROOM	
12	146 2729 000	1	Dichtung Kit	
13	146 0741 000	1	Dichtung für SchmutzbehälSR 1000 SP	
14	1463977000	1	Abdichtung	
15	1464432000	1	Kohle Kit 4 Stück	
16	1467083000	2	CARBON BRUSH 2 PCS SET	
17	L08603949	2	Kohlenbürsten Kit 4pcs	
18	909 5074 000	1	Kohlebürsten-Kit (2Stck.)	
19	146 2486 000	1	Sicherung 70 A	
20	145 0227 000	1	Sicherung 40Anicht mehr bestellen	
21	145 8514 000	1	Sicherung 25A	
22	145 8513 000	1	FUSE BLADE 30A UL	
23	1467558000	2	WHEEL CPL 3.00/4 SOLID RUBBER KIT	
24	146 2442 000	1	Vorderrad superelastisch	
25	146 2795 000	1	Rüttelmotor f. SR 1100 S	
26	9100000855	1	SPRING GAS 30 KG PKD	
27	1466161000	1	CONTROLLER MAIN MACHINE KIT	
28	146 2887 000	1	Schlüssel (2 Stück)	
29	1466173000	1	CONTROLLER DRIVE WHEEL PKD	
30	146 2792 000	1	Motor	
31	1467688000	1	REDUCTION GEARMOTOR 60W 24V RT KIT	
32	1467689000	1	REDUCTION GEARMOTOR 60W 24VLT KIT	
33	1466506000	2	MICROSWITCH 10A 250V PKD	
34	146 2532 000	1	SWITCH	
35	909 5706 000	1	Hauptschalter 30 A	
36	L08812633	1	Sicherungsautomat 10 Azu SR 100 SB	
37	146 2952 000	1	Fahrpedal kompl. BR 601	
38	146 1646 000	1	RELAY 24V	
39	146 0719 000	1	Schütz 24V	
40	146 2480 000	1	Potentiometer Fahrtrieb	
41	146 2463 000	1	Bremsseil	

