

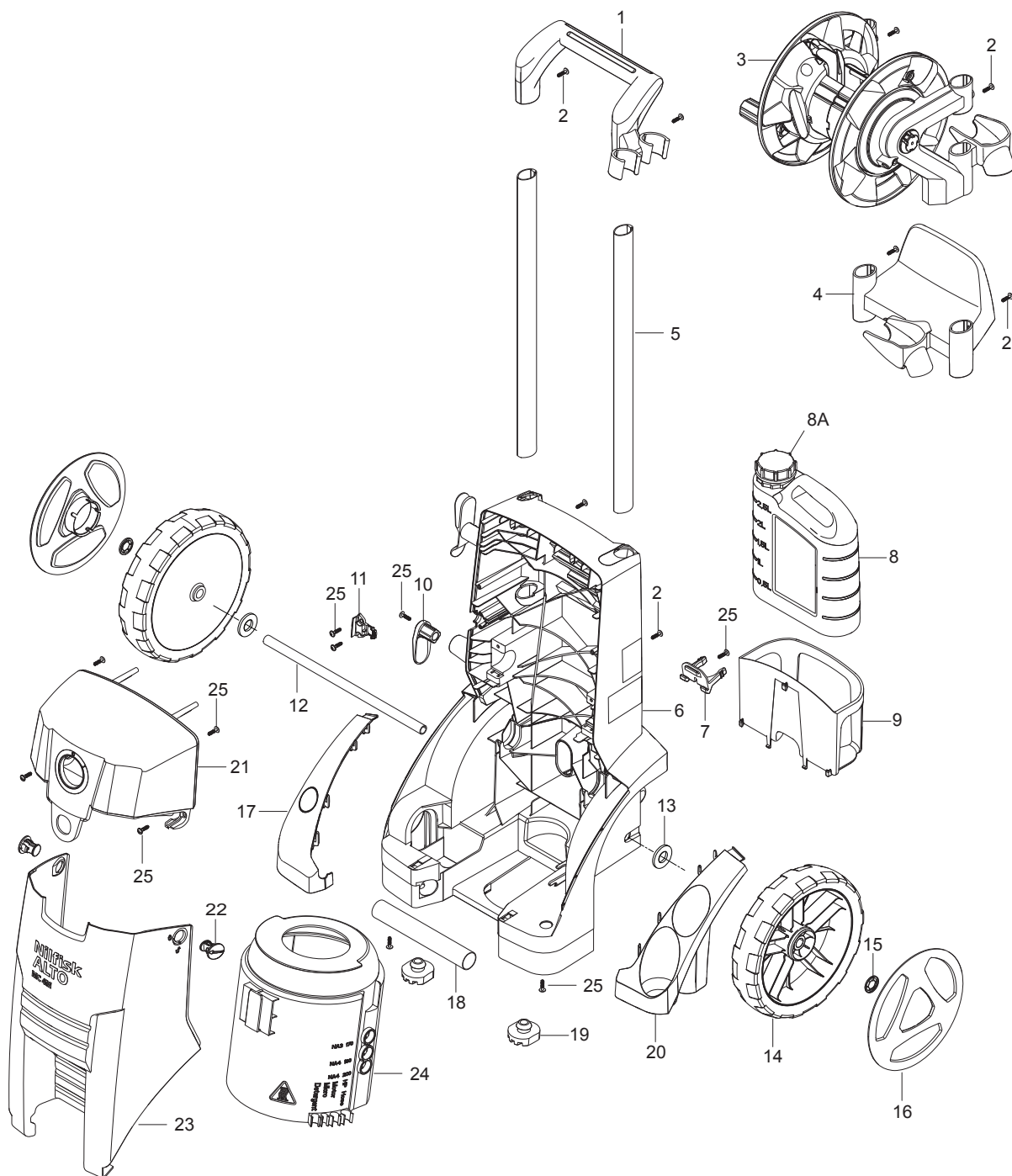
PARTS LIST



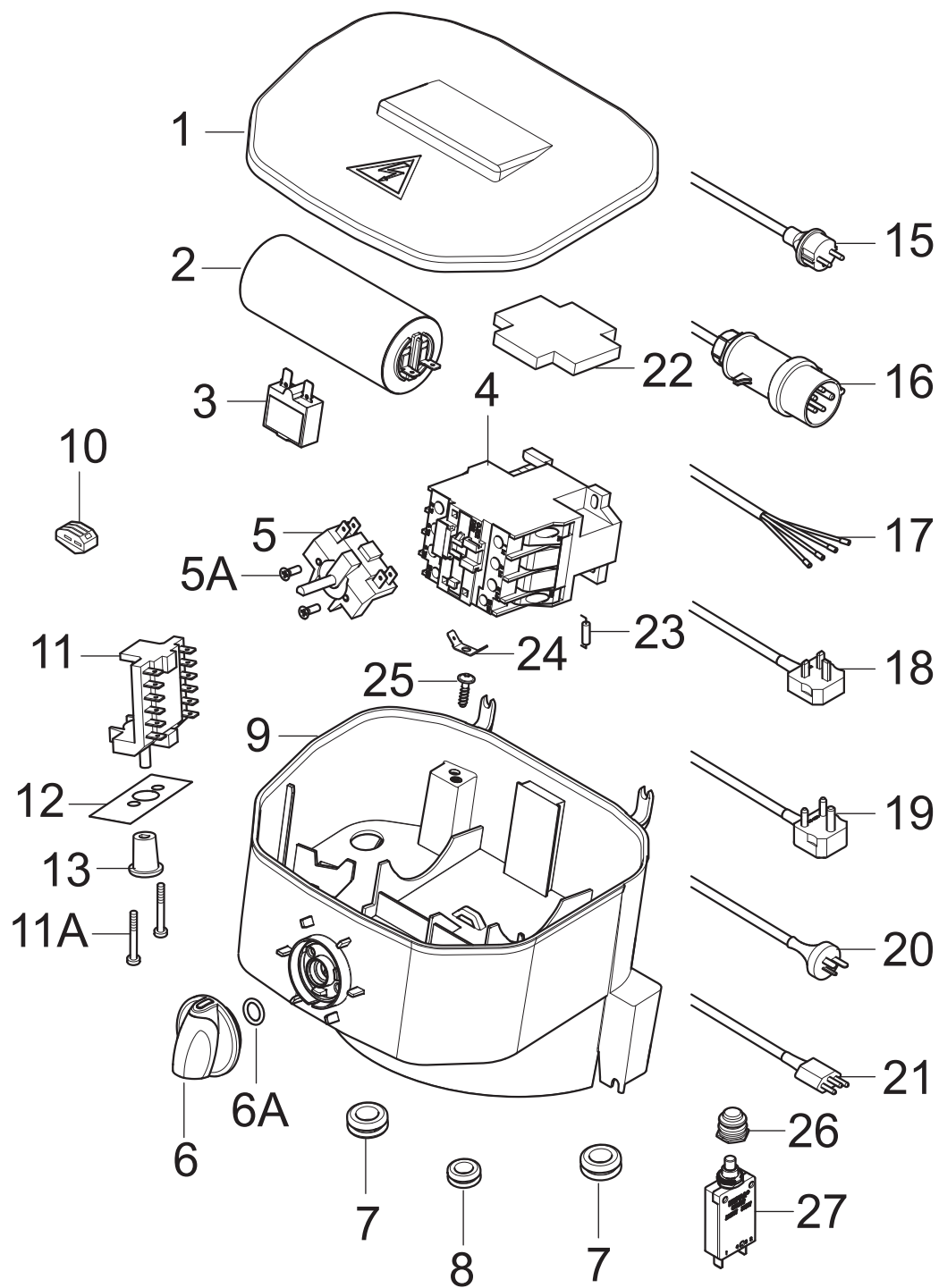
2016.01.13

TABLE OF CONTENTS

| | |
|--|----|
| Overview | 1 |
| Electric box | 3 |
| Motor MC4 | 5 |
| Hose reel | 7 |
| Pump wihtout easy start and without injector | 9 |
| Recommended spare part | 11 |
| Accessories | 13 |



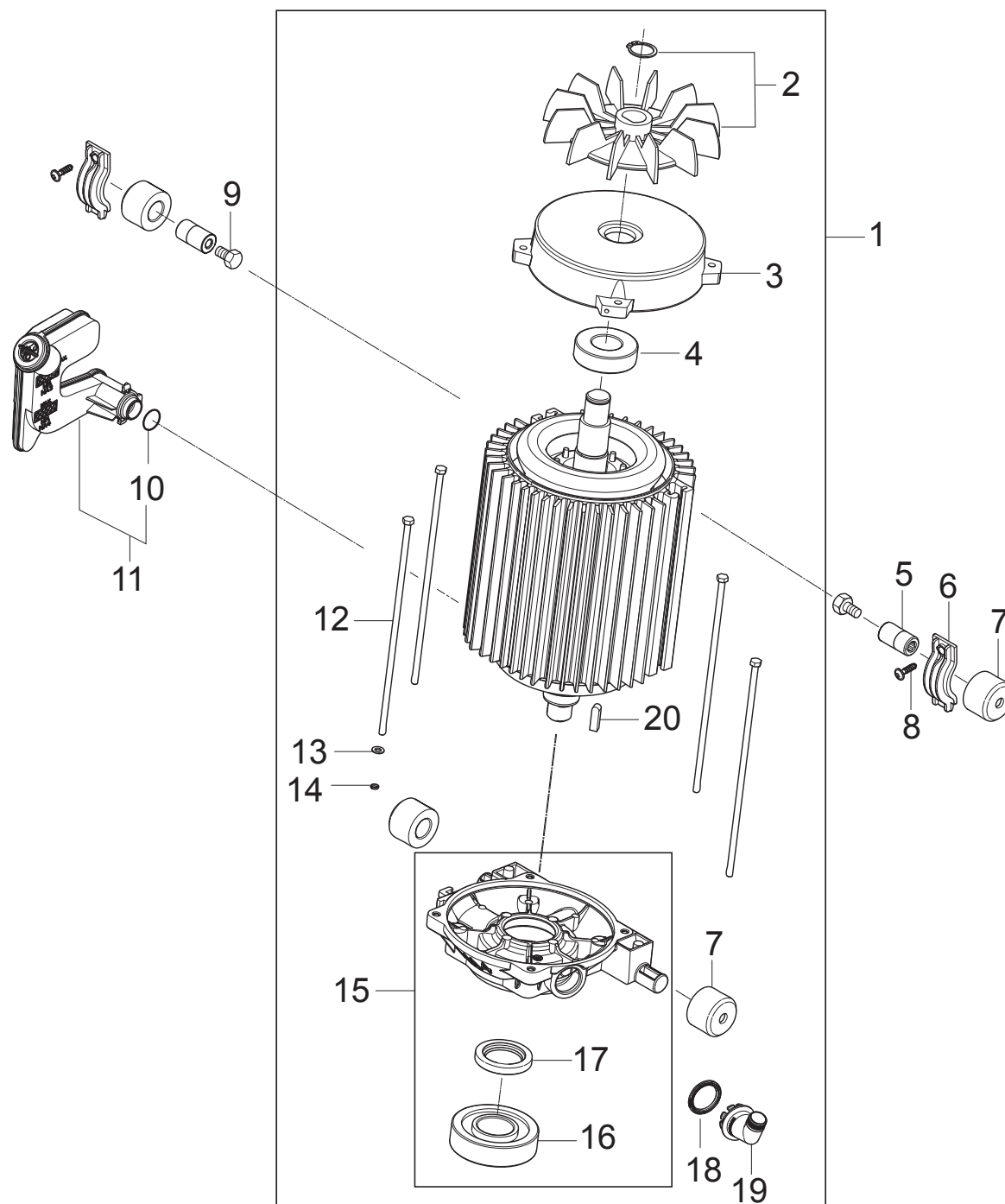
| Pos. | Artikel-Nr. | Menge | Variante | Notes |
|------|-------------|-------|--|-------|
| 1 | 107142500 | 1 | HANDLE MC 3-4 | |
| 2 | 909100425 | 4 | 1x Schraube M6X12 | |
| 3 | 107145803 | 1 | Schlauchtrommel Set für M | |
| 4 | 107142501 | 1 | HOSE HOOK MC 3-4 | |
| 5 | 107142502 | 2 | ALU PROFILE 25X35 MC 3-4 | |
| 6 | 107142503 | 1 | CHASSIS MC 3-4 | |
| 7 | 107142504 | 1 | HOLDER F. FOAM GUN | |
| 8 | 107141635 | 1 | Reinigungsmitteltank | |
| 8A | 107141664 | 1 | Deckel | |
| 9 | 107142505 | 1 | Halterung Kanister | |
| 10 | 107142507 | 1 | CABLE HOOK MC 3-4 | |
| 11 | 107142509 | 1 | CABLE CLAMP MC 3-4 | |
| 12 | 301002304 | 1 | Achse | |
| 13 | 909100426 | 2 | 2x Beilagscheibe DIN34815 | |
| 14 | 107142510 | 2 | WHEEL ?250x55 | |
| 15 | 11710 | 2 | Klemmring 15 | |
| 16 | 107142511 | 2 | WHEEL CAP F. WHEEL ?250X55 NILFISK | |
| 17 | 107142515 | 1 | WHEEL CABINET RIGHT MC 3-4 | |
| 18 | 107142517 | 1 | HANDLE - ALU BAR | |
| 19 | 301002301 | 2 | Stützfuß | |
| 20 | 107142518 | 1 | WHEEL CABINET LEFT MC 3-4 | |
| 21 | 107142520 | 1 | CABINET E-BOX MC 3-4 | |
| 22 | 301000584 | 2 | Verriegelung | |
| 23 | 107142523 | 1 | CABINET MC 4M | |
| 24 | 107142525 | 1 | FAN CAP | |
| 25 | 107141838 | 10 | SCHRAUBE K50X18 WN1451 SCHWARZ TORX 20 | |



| Pos. | Artikel-Nr. | Menge | Variante | Notes |
|------|-------------|-------|--|-------|
| 1 | 107142547 | 1 | E-BOX LID MC 3-4 | |
| 2 | 301002320 | 1 | Kondensator 70 µF | |
| 3 | 301002322 | 1 | Sicherung 16 A | |
| 3 | 107142548 | 1 | FUSE 16 AMPS TYPE 2-5700-IG2-P10-DD-16A | |
| 4 | 103822300 | 1 | Schütz CJX2-D12-V7 400V | |
| 4 | 103822303 | 1 | Schütz CJX2-D18 18A 400V 3P+NO | |
| 5 | 301001058 | 1 | Schalter | |
| 5A | 18274 | 2 | Senkschraube M4x12 | |
| 6 | 909100204 | 1 | Drehknopf 6x5 blau | |
| 6A | 9868 | 1 | O-Ring 10x2,5 | |
| 7 | 301002284 | 2 | Tülle | |
| 8 | 3803772 | 1 | Tülle | |
| 9 | 107142550 | 1 | E-BOX BOTTOM MC 3-4 | |
| 10 | 301001229 | 1 | Klemmleiste | |
| 11 | 64579 | 1 | Drehschalter Stern-Dreiec | |
| 11A | 3389 | 2 | Zylinderschraube M4 x 20 ISO 1207 zn | |
| 12 | 107142551 | 1 | LABEL 230-400V CHANGE-OVER 74X28 | |
| 13 | 64580 | 1 | Drehknopf | |
| 15 | 107142552 | 1 | POWER CORD - H07RN-F 3G1.5X6M. CEE 7 1 P | |
| 16 | 107142553 | 1 | POWER CORD - H07RN-F 4G1.5X6M. CEE 5 3 P | |
| 17 | 107142554 | 1 | POWER CORD - H07RN-F 4G1.5X6M. Y/D 3PH | |
| 18 | 107142555 | 1 | POWER CORD H07RN-F 3G1.5X6M BS1363 1PH | |
| 19 | 107142556 | 1 | POWER CORD H07RN-F 3G1.5X6M SABS 164 1 | |
| 20 | 107142557 | 1 | POWER CORD H07RN-F 3G1.5X6M AS 3112 1P | |
| 21 | 107142558 | 1 | POWER CORD H07RN-F 3G1.5X6M NBR 14136 | |
| 22 | 64773 | 1 | Hilfskontakt 100-SBL11 | |
| 23 | 301000074 | 1 | Widerstand 470 ohm/3W | |
| 24 | 107142559 | 1 | FASTON TAB TERMINAL DOUBLE STUD 45° | |
| 25 | 107141838 | 1 | SCHRAUBE K50X18 WN1451 SCHWARZ TORX 20 | |
| 26 | 107142564 | 1 | FUSE CAP ETA TYPE X 200 801 08 (UNITOR) | [1] |
| 27 | 107142548 | 1 | FUSE 16 AMPS TYPE 2-5700-IG2-P10-DD-16A | [1] |

Part Notes:

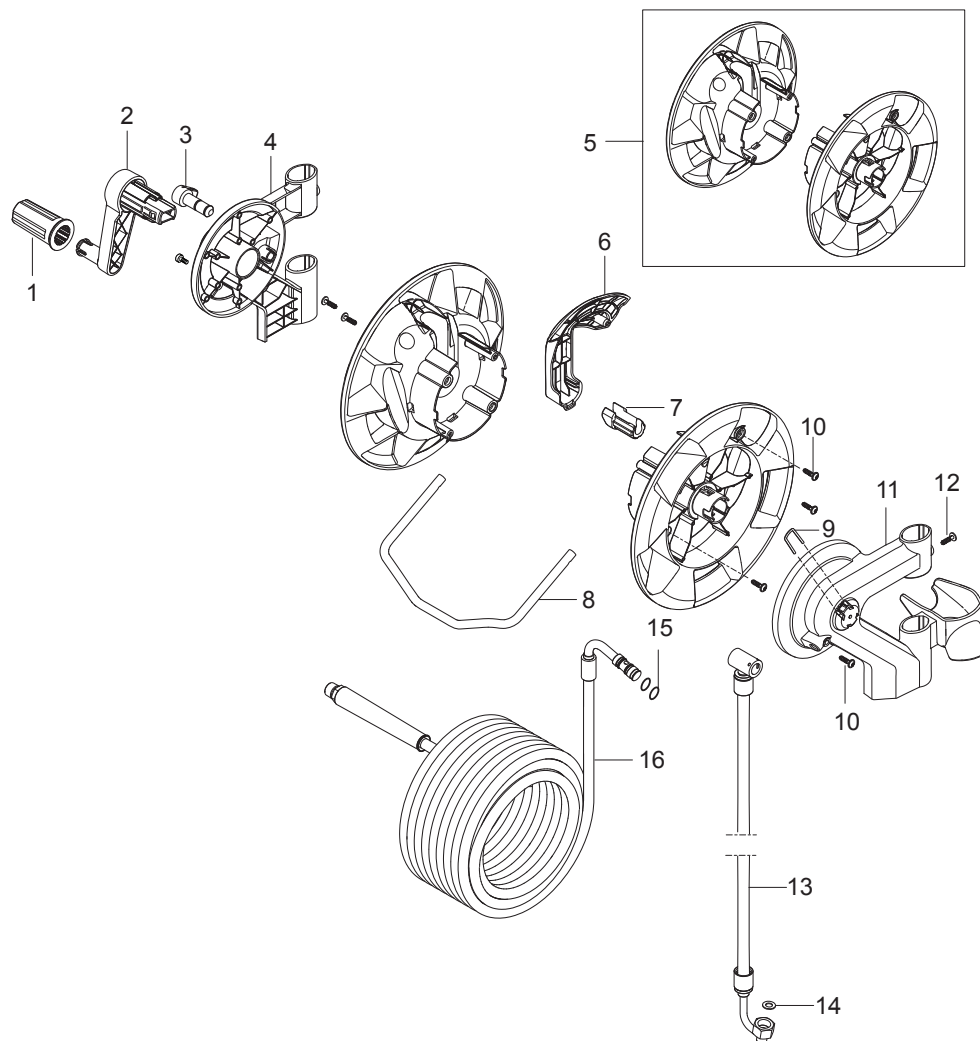
[1] - UNITOR



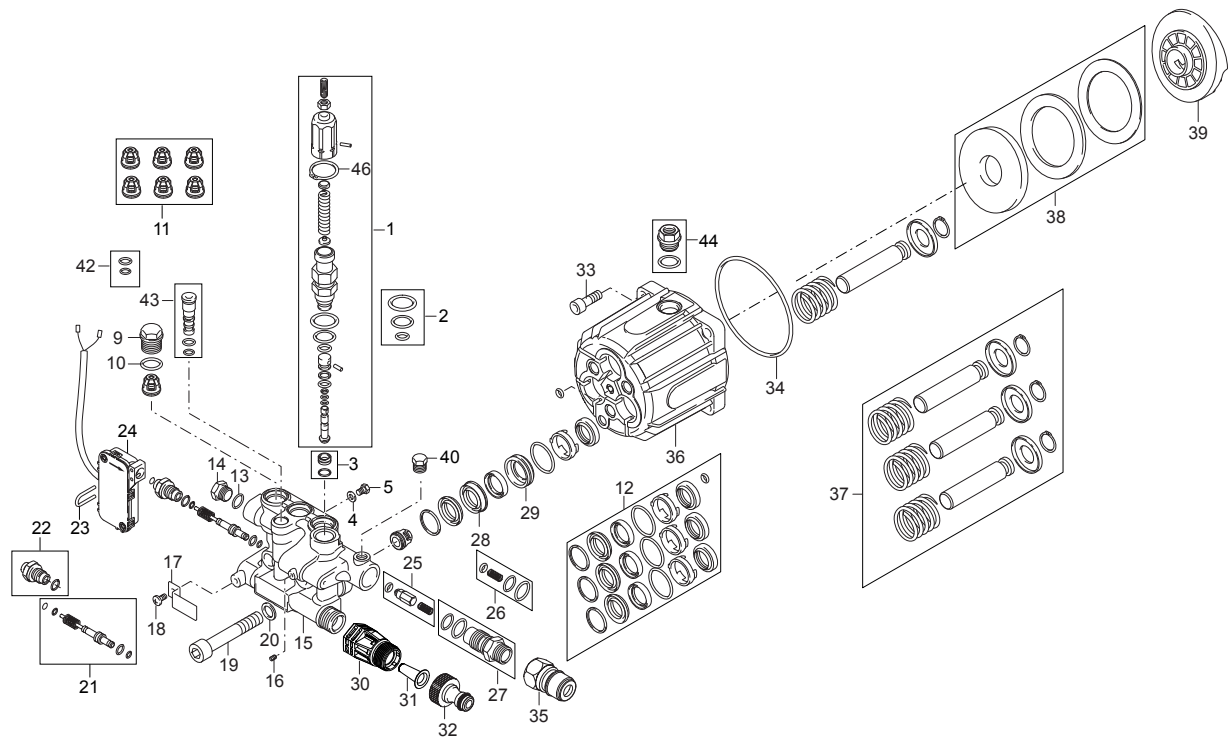
| Pos. | Artikel-Nr. | Menge | Variante | Notes |
|------|-------------|-------|--|-------|
| 1 | 31001006 | 1 | MOTOR NA4 - 2.2KW/230V/50HZ/1PH | [1] |
| 1 | 31001007 | 1 | MOTOR NA4 - 2.2KW/220V/60HZ/1PH | [2] |
| 1 | 31001008 | 1 | MOTOR NA4 - 3.2KW/230/400V/50HZ/3PH | [3] |
| 1 | 31001009 | 1 | MOTOR NA4 - 3.5KW/200V/50HZ/3PH | [4] |
| 1 | 31001010 | 1 | MOTOR NA4 - 2.8KW/230/400V/50HZ/3PH | [5] |
| 2 | 107145038 | 1 | FAN INCL. SEAL V-RING | |
| 3 | 107145037 | 1 | N-BEARING COVER | |
| 4 | 301003080 | 1 | Lager 6205 ZZ | |
| 5 | 107142544 | 2 | NUT M8 X D17 X L31 INT. HEX 8 | |
| 6 | 301002296 | 2 | Halter | |
| 7 | 107142545 | 4 | SUSPENSION D35 X D17 X L25 | |
| 8 | 107141838 | 2 | SCHRAUBE K50X18 WN1451 SCHWARZ TORX 20 | |
| 9 | 2753 | 2 | Sechskantschraube M8x 20 ISO 4017 zn | |
| 11 | 107142546 | 1 | OIL CONTAINER MC 3-4 | [6] |
| 10 | 4029 | 1 | O-Ring 18,0 X2,5 DIN | [7] |
| 12 | 31000916 | 4 | STAY BOLT M5X210 | |
| 12 | 31000917 | 4 | STAY BOLT M5X230 | [8] |
| 13 | 31000918 | 4 | WASHER D5.5XD10 GB/T97.1 ISO7089 | |
| 14 | 31000919 | 4 | LOCK RING D5.1XD7.7 GB/T93 DIN127 | |
| 15 | 31000920 | 1 | D-BEARING COVER P4 INCL SEAL AND BEARING | |
| 16 | 31001028 | 1 | BEARING 7306 | |
| 17 | 301003078 | 1 | Wellendichtring | |
| 18 | 31000921 | 1 | SEAL ID 23.4XOD 31 D 2/3.5 | |
| 19 | 31000922 | 1 | CABLE GLAND 23.5 SNAPON 110 DEG | |
| 20 | 101814798 | 1 | Passfeder | |

Part Notes:

- [1] - MC 4M-160/620 230/1/50/16 XT - MC 4M-140/620 230/1/50/13 EU - MC 4M-140/620 230/1/50/13 UK - MC 4M-160/620 230/1/50/16 EU - MC 4M-100/770 230/1/50/13 UK
- [2] - MC 4M-150/620 220/1/60/15 (XT)
- [3] - MC 4M-180/740 400/3/50 - MC 4M-180/740 XT 400/3/50 - MC 4M-180/740 230-400/3/50 XT NO - MC 4M-180/740 220-440/3/60
- [4] - MC 4M-160/720 200/3/50 JP
MC 4M-160/720 200/3/60 JP
- [5] - MC 4M-160/720 400/3/50
- [6] - TSB-PPW-2015-007 MC 3C MC 4M, Oil Container leaking oil at O-ring seal
DE TSB-PPW-2015-007 MC 3C und MC 4M, Öl Behälter Leckage bei dem O-Ring
- [7] - GUARANTEE DATE EXPIRED
- [8] - Only for MC 4M-180/740



| Pos. | Artikel-Nr. | Menge | Variante | Notes |
|------|-------------|-------|---|-------|
| 0 | 107145803 | 1 | Schlauchtrommel Set für M | |
| 1 | 107142530 | 1 | ROTATING HANDLE F. HOSE REEL | |
| 2 | 107142532 | 1 | HANDLE FOR HOSE REEL MC 3-4 | |
| 3 | 107142533 | 1 | STOPPER PIN CPL. F. HOSE REEL MC 3-4 | |
| 4 | 107142535 | 1 | ADAPTOR FOR HOSE REEL RIGHT MC 3-4 | |
| 5 | 107142536 | 1 | HOSE REEL MC 3-4 | |
| 6 | 107142537 | 1 | HOSE COVER MC 3-4 | |
| 7 | 107142538 | 1 | FITTING GUIDE F. HOSE REEL MC 3-4 | |
| 8 | 107142539 | 1 | HOSE GUIDE MC 3-4 | |
| 9 | 128500592 | 1 | LOCK KIT | |
| 10 | 107141838 | 5 | SCHRAUBE K50X18 WN1451 SCHWARZ TORX 20 | |
| 11 | 107142540 | 1 | ADAPTOR FOR HOSE REEL LEFT MC 3-4 | |
| 12 | 909100425 | 2 | 1x Schraube M6X12 | |
| 13 | 107142541 | 1 | CONNECTION HOSE DN8 F. HOSE REEL MC 3-4 | |
| 14 | 65466 | 1 | Dichtring 8,0x15,0x1,0 DI | |
| 15 | 3004321 | 2 | O-Ring 10,0 x 2,0 PUR90 | |
| 16 | 107142542 | 1 | HP-HOSE DN6X15M MC 3-4 | |



| Pos. | Artikel-Nr. | Menge | Variante | Notes |
|------|-------------|-------|-----------------------------|-------|
| 1 | 31000978 | 1 | REGULATION SAFETY BLOCK | |
| 2 | 301003032 | 1 | Dichtungssatz | |
| 3 | 301003033 | 1 | Ventilsitzring | |
| 4 | 31000944 | 1 | WASHER | |
| 5 | 301003035 | 1 | Verschlussschraube | |
| 9 | 301003039 | 1 | Verschlussschraube | |
| 10 | 301003040 | 1 | 3 x O-Ring 15,6X1,78 | |
| 11 | 31000576 | 6 | VALVE KIT 6 PCS | |
| 12 | 301003042 | 3 | Dichtungssatz Kolben | |
| 13 | 301003043 | 1 | O-Ring 10,82X1,78 820510 | |
| 14 | 301003044 | 1 | Verschlussschraube | |
| 15 | 301003045 | 1 | Ventilblock | |
| 16 | 301003046 | 1 | Verschlussschraube | |
| 17 | 301003047 | 1 | Halter | |
| 18 | 301003048 | 1 | Schraube | |
| 19 | 301003049 | 1 | 3x Schraube M12X70 | |
| 20 | 301003050 | 1 | 3x Zahnscheibe ¥12 | |
| 21 | 31000939 | 1 | PISTON KIT FOR MICROSWITCH | |
| 22 | 31000940 | 1 | FITTING KIT FOR MICROSWITCH | |
| 23 | 301003053 | 1 | Bügel | |
| 24 | 31000955 | 1 | SWITCHBOX ASSEMBLY | |
| 25 | 31000988 | 1 | INJECTOR | |
| 26 | 31000989 | 1 | O-RING KIT FOR INJECTOR | |
| 27 | 31000990 | 1 | INJECTOR KIT | |
| 28 | 301001559 | 1 | Buchse | |
| 29 | 301003059 | 1 | Kolbenführung | |
| 30 | 107142566 | 1 | WATER INLET TUBE | |
| 31 | 101117926 | 1 | Sieb | |
| 32 | 1402809 | 1 | Schlauchstutzen/Nippel | |
| 33 | 301003063 | 1 | Schraube 5x25 | |
| 34 | 31000973 | 1 | O-RING D 94.92x2.62 | |
| 35 | 1600493 | 1 | Anschlussstück | |
| 36 | 31000972 | 1 | PUMP BODY | |
| 37 | 31000992 | 3 | PISTON KIT D18 | |
| 38 | 31000993 | 1 | BEARING KIT 1MM | [1] |
| 38 | 31000994 | 1 | BEARING KIT 2MM | [2] |
| 39 | 31000975 | 1 | WOBBLE DISC 12.5 DEG | [3] |
| 39 | 31000976 | 1 | WOBBLE DISC 12.5 DEG | [4] |
| 39 | 31000977 | 1 | WOBBLE DISC 10.5 DEG | [5] |
| 39 | 301003137 | 1 | Taumelscheibe 11° | [6] |
| 39 | 301003139 | 1 | Taumelscheibe 13° | [7] |
| 40 | G030733 | 1 | HOLE PLUG. 1/8 | [8] |
| 42 | 301003160 | 2 | O-RING Satz | |
| 43 | 301003073 | 1 | Verschlussschraube | |
| 44 | 31001000 | 1 | PLUG KIT FOR PUMP BODY | |
| 46 | 101117994 | 1 | RETAINER RING Ø23 DIN 471 | |

Part Notes:

- [1] - MC 4M-160/720 400/3/50 - MC 4M-160/720 200/3/50 JP - MC 4M-160/720 200/3/60 JP
- [2] - MC 4M-180/740 400/3/50 - MC 4M-180/740 XT 400/3/50 - MC 4M-180/740 230-400/3/50 XT NO - MC 4M-180/740 220-440/3/60
- [3] - MC 4M-160/720 400/3/50
- [4] - MC 4M-180/740 400/3/50 - MC 4M-180/740 XT 400/3/50 - MC 4M-180/740 230-400/3/50 XT NO
- [5] - MC 4M-180/740 220-440/3/60
- [6] - MC 4M-160/720 200/3/60 JP
- [7] - MC 4M-160/720 200/3/50 JP
- [8] - Gerni Machines outph.2006

| Pos. | Artikel-Nr. | Menge | Variante | Notes |
|------|-------------|-------|---|-------|
| A | 301003042 | | Dichtungssatz Kolben | |
| A | 301001559 | | Buchse | |
| A | 301003059 | | Kolbenführung | |
| A | 31000978 | | REGULATION SAFETY BLOCK | |
| A | 301003032 | | Dichtungssatz | |
| A | 301003033 | | Ventilsitzring | |
| A | 31000981 | | EASY START KIT | |
| A | 301003037 | | Dichtungssatz | |
| A | 31000983 | | SEAT EASY START KIT | |
| A | 301003040 | | 3 x O-Ring 15,6X1,78 | |
| A | 31000576 | | VALVE KIT 6 PCS | |
| A | 31000988 | | INJECTOR | |
| A | 31000989 | | O-RING KIT FOR INJECTOR | |
| A | 101117926 | | Sieb | |
| A | 31001000 | | PLUG KIT FOR PUMP BODY | |
| A | 65466 | | Dichtring 8,0x15,0x1,0 DI | |
| A | 3004321 | | O-Ring 10,0 x 2,0 PUR90 | |
| A | 107142541 | | CONNECTION HOSE DN8 F. HOSE REEL MC 3-4 | |
| A | 107142542 | | HP-HOSE DN6X15M MC 3-4 | |
| A | 107142548 | | FUSE 16 AMPS TYPE 2-5700-IG2-P10-DD-16A | |
| A | 301002322 | | Sicherung 16 A | |
| A | 301003078 | | Wellendichtring | |
| B | 31000955 | | SWITCHBOX ASSEMBLY | |
| B | 31000939 | | PISTON KIT FOR MICROSWITCH | |
| B | 31000940 | | FITTING KIT FOR MICROSWITCH | |
| C | 31000973 | | O-RING D 94.92x2.62 | |
| C | 31000992 | | PISTON KIT D18 | |
| C | 301003139 | | Taumelscheibe 13° | |
| C | 31000993 | | BEARING KIT 1MM | |
| C | 31000994 | | BEARING KIT 2MM | |
| C | 31000975 | | WOBBLE DISC 12.5 DEG | |
| C | 31000976 | | WOBBLE DISC 12.5 DEG | |
| C | 31000977 | | WOBBLE DISC 10.5 DEG | |
| C | 301003138 | | Taumelscheibe 11°30' | |
| C | 103822300 | | Schütz CJX2-D12-V7 400V | |
| C | 103822303 | | Schütz CJX2-D18 18A 400V 3P+NO | |
| C | 301001058 | | Schalter | |
| C | 301002320 | | Kondensator 70 µF | |
| C | 301003079 | | Kugellager DIN628-7305B | |
| C | 31000974 | | WOBBLE DISC 9 DEG | |

| Pos. | Artikel-Nr. | Menge | Variante | Notes |
|------|-------------|-------|--|-------|
| 1 | 106403122 | 1 | ERGO 2000 STANDARD W. HOSE SWIVEL | [1] |
| | 32541 | 1 | Schlauchanschluss | |
| 2 | 107142542 | 1 | HP-HOSE DN6X15M MC 3-4 | [2] |
| 2 | 301002275 | 1 | HD-Schlauch DN6x10m 3/8 | [3] |
| 3 | 106403035 | 1 | UNIVERSAL PLUS LANCE 1090 | [4] |
| 3 | 107142577 | 1 | HP-NOZZLE 1/8-27NPT MEG 25035 | [5] |
| 3 | 107142578 | 1 | HP-NOZZLE 1/8-27NPT MEG 25040 | [6] |
| 3 | 106402282 | 1 | FLEXOPOWER PLUS 960 | [7] |
| 3 | 106403011 | 1 | TORNADO PLUS 1000 gebogen | [8] |
| 3 | 106408250 | 1 | 4-IN-1 LANCE INCL 0340 ALUMINUM HEAD | [9] |
| 3 | 106408251 | 1 | 5 in 1 Lanze 0450 | [10] |
| 3 | 106408252 | 1 | Universal Plus Strahlrohr mit 4-in-1 Düs | [11] |
| 4 | 101119735 | 1 | HD-Düse 0340 TORNADO | [12] |
| 4 | 101119736 | 1 | HD-Düse 0350 TORNADO | [13] |
| 4 | 101119737 | 1 | HD-Düse 0370 TORNADO | [14] |
| 4 | 101119738 | 1 | Düse NT0400 | [15] |
| 4 | 101119742 | 1 | HD-Düse 0530 TORNADO | [16] |
| 5 | 107145800 | 1 | Schlauchführung für MC 3- | [17] |
| 5 | 107145802 | 1 | WASSERFILTER KOMPLETT | [18] |
| 5 | 107145803 | 1 | Schlauchtrommel Set für M | [17] |
| 6 | 106408234 | 1 | NILFISK-ALTO Schaumspühe | [19] |
| 6 | 106408235 | 1 | NILFISK-ALTO Schaumspühe | [19] |
| 6 | 106408236 | 1 | NILFISK-ALTO FOAMSPRAYER VARIO HF 0950 | [19] |
| 7 | 107142570 | 1 | MANOMETER MC 4 | |
| 8 | 107142571 | 1 | Wassermengenregulierung M | |
| 8 | 107142572 | 1 | WATER REGULATION CPL. GERNI | |

Part Notes:

- [1] - ERGO 2000 Spray handle
- [2] - X-TRA (with hose reel)
- [3] - Without hose reel
- [4] - MC 4M 140/620, MC 4M 160/720
UNIVERSAL PLUS lance
- [5] - MC 4M-140/620 230/1/50/13
- [6] - MC 4M-160/720 400/3/50
- [7] - MC 4M 100/770, MC 4M 140/620, MC 4M MC 150/620, MC 4M MC 160/620, MC 4M MC 160/720, MC 4M MC 180/740
FLEXOPOWER PLUS lance
- [8] - TORNADO PLUS lance
- [9] - MC 4M 150/620 X-tra, MC 4M 160/620 X-tra
4 in1 Nozzle
- [10] - MC 4M 140/620 X-tra
4 in1 Nozzle
- [11] - MC 4M 180/740 X-tra
4 in1 Nozzle
- [12] - MC 4M 150/620, MC 4M 160/620

MC 4M 150/620 X-tra, MC 4M 160/620 X-tra
- [13] - MC 4M 140/620 X-tra
- [14] - MC 4M 180/740, MC 4M 180/740 X-tra
- [15] - MC 4M 160/720
- [16] - MC 4M 100/770
- [17] - Hose reel
- [18] - Water filter 2015
- [19] - Foam sprayer 2015

