

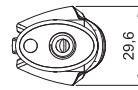
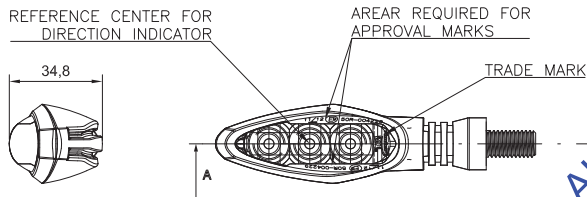
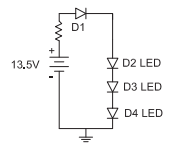
SECTION A-A

MARKS ON LENS

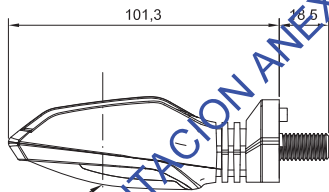
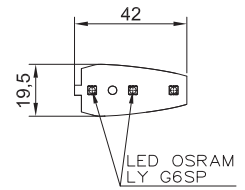


90516
13.5V 3W

PCB CIRCUIT



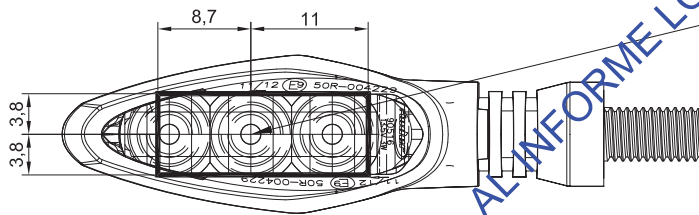
LED BOARD WITH LED POSITION



REMARKS:
FRONT RIGHT/ REAR LEFT HAND REPRESENTED
FRONT LEFT/ REAR RIGHT HAND IS SYMMETRIC

MODEL	90516 DIRECTION INDICATOR LAMP CATEGORY 11 AND CATEGORY 12	
DRAWING N°	D13_90516_1A	
UNITS:	HOMOLOGATION MARKS DETAIL SCALE 1:1 AS PER N°50 REGULATION.	
mm.		
SCALE:	FRONT RIGHT HAND/ REAR LEFT HAND 11/12 (E9) 50R-004229	
1:2		


ILLUMINATING AREA FOR 90516 DIRECTION INDICATOR



REFERENCE CENTER FOR
DIRECTION INDICATOR

REMARKS:
FRONT RIGHT/ REAR LEFT HAND REPRESENTED
FRONT LEFT/ REAR RIGHT HAND IS SYMMETRIC

DOCUMENTACION ANEXA AL INFORME LCOE 201305410487

MODEL	90516 DIRECTION INDICATOR LAMP CATEGORY 11 AND CATEGORY 12	
UNITS: mm.	THIS ILLUMINATING AREA CORRESPONDS TO THE DEVICE DEFINED IN DRAWING: D13_90516_1A	
SCALE: 1:1		