

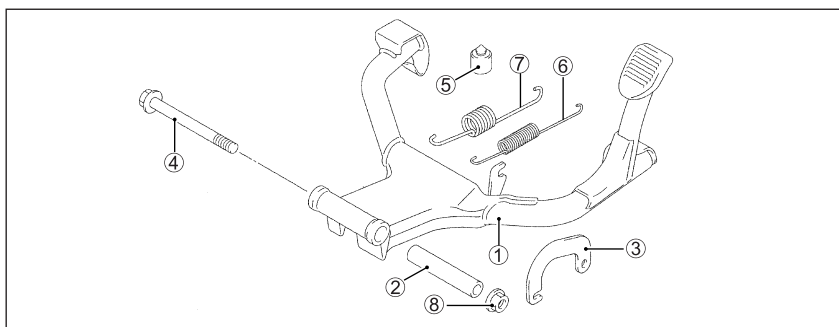
Description: **CENTER STAND SET**

Part Number: 42100-18830

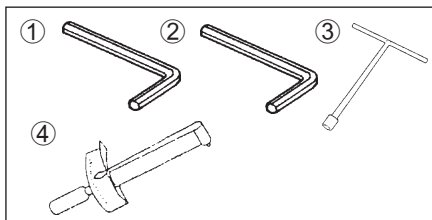
Applications: GSX650F/FUK8

Installation Time: 1.0 Hours

Contents	Ref.	Description	QTY
	①	CENTER STAND COMP	1
	②	SPACER	1
	③	HOOK	1
	④	BOLT	1
	⑤	CUSHION	1
	⑥	INNER SPRING	1
	⑦	OUTER SPRING	1
	⑧	NUT	1



Tools Required	Ref.	Description
	①	Hexagon Wrench (4 mm)
	②	Hexagon Wrench (6 mm)
	③	T-Wrench (12 mm) or Box-end Wrench(12 mm x 14 mm)
	④	Torque Wrench



Important ▲ WARNING / CAUTION / NOTE

Please read this manual and follow its instructions carefully. To emphasize special information, the symbol ▲ and words **WARNING**, **CAUTION** and **NOTE** have special meanings. Pay special attention to the messages highlighted by these signal words.

▲ WARNING

Indicates a potential hazard that could result in death or injury.

CAUTION

Indicates a potential hazard that could result in vehicle damage.

NOTE: Indicates special information to make maintenance easier or instructions clearer.

GENUINE SUZUKI ACCESSORIES

99021-17H00

Precautions for Installation

1. Check that the kit has all the parts as listed in the “**CONTENTS**” section.
2. Check each part in the kit for scratches or any form of damage.
3. Park the motorcycle in a level place.
4. Remove the ignition key from the switch and store it in a safe place.
5. Protect any items to be removed or to be installed from scratches by placing them on a soft cloth first before putting them on the ground.
6. Use care not to cause any damage to the body of the motorcycle during installation of the accessory.

Installation
⚠ WARNING

Do not work by using a side stand. Jack up the motorcycle with a fork stand and a swing arm stand, and fix secure for safety. Make sure that the motorcycle is supported securely. To avoid getting burned, do not touch the engine, the radiator and the exhaust system until they have cooled.

1. Remove the cowling comp R/L from the motorcycle.
2. Remove the exhaust pipe from the motorcycle.

CAUTION

Be careful not to bend the radiator fins and the oil cooler fins.

3. Insert SPACER ② thru the hole of CENTER STAND COMP ①. Set them to the installation position as shown in Fig.1.

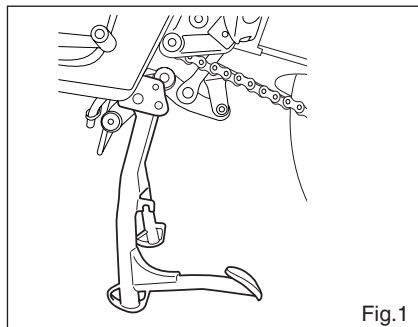


Fig.1

4. Insert BOLT ④ from the RH side of the motorcycle.
5. Tighten BOLT ④ and NUT ⑧ to the specified torque of 50 N·m. (5.0 kg·m, 37.9 lb·ft).

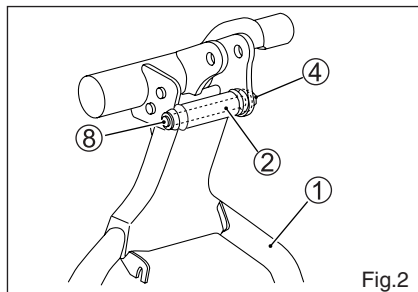
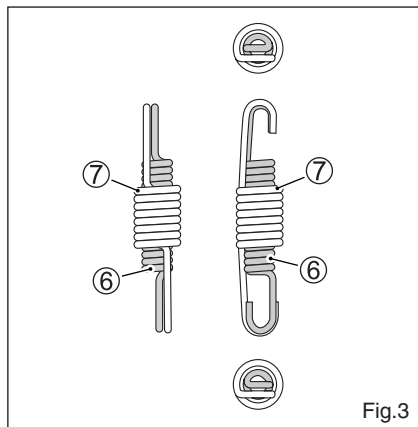


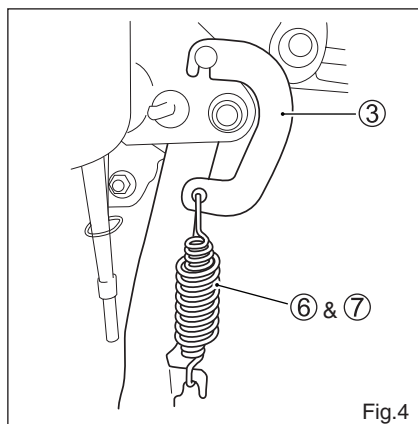
Fig.2

6. Insert INNER SPRING ⑥ into OUTER SPRING ⑦ as shown in Fig.3.



7. Set the assembled spring ⑥ & ⑦ to CENTER STAND HOOK ③ and hook them to CENTER STAND COMP ① from the outside. Then apply grease to both ends of HOOK ③ and springs ⑥ & ⑦ as shown in Fig.4.

NOTE : Check for smooth movement and rotation of the center stand.



8. Install CUSHION ⑤ under the right side of the muffler as shown in Fig.5.
9. Reinstall all the removed parts on the motorcycle.
10. Test the center stand to make sure it works accordingly.

